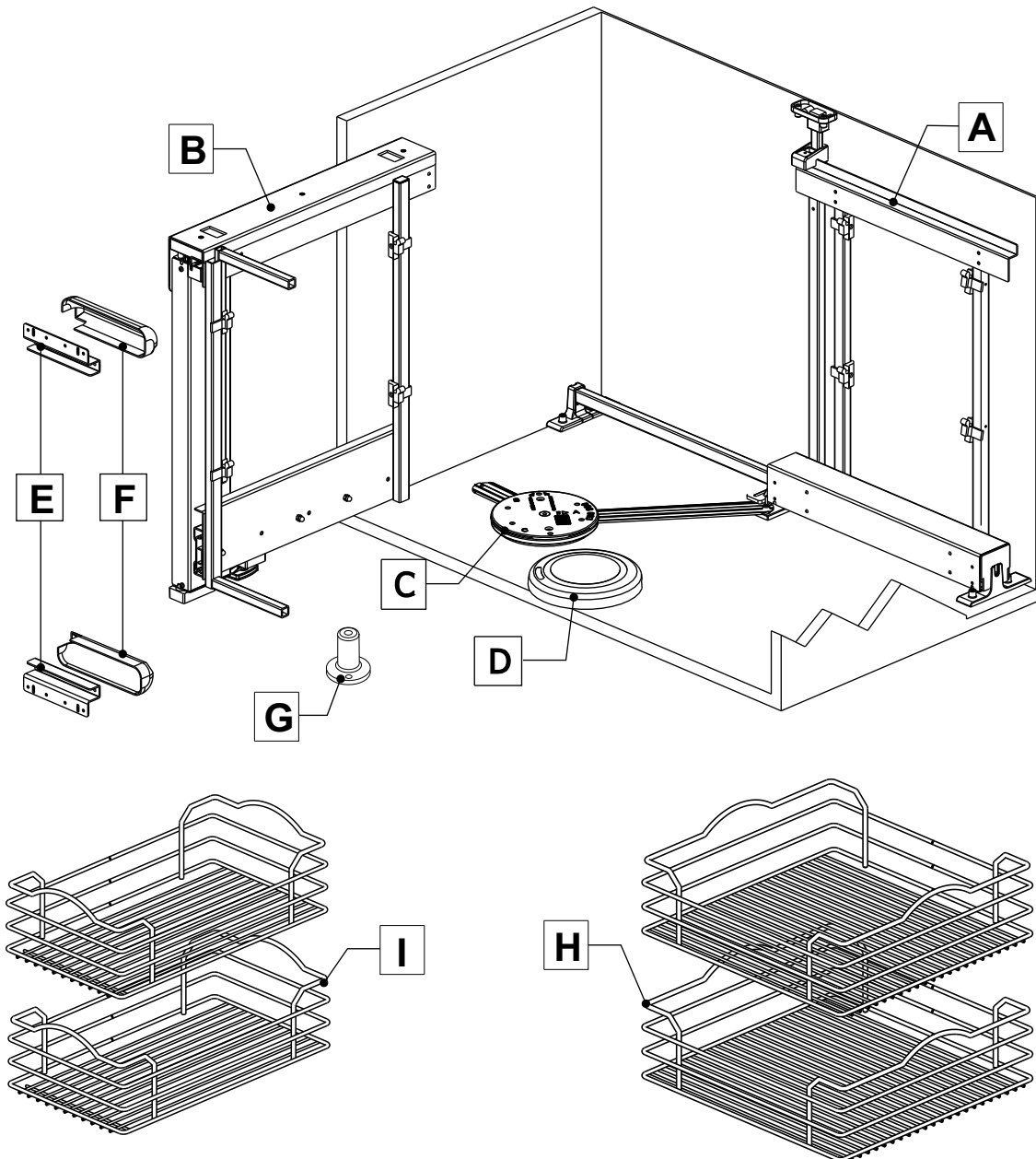
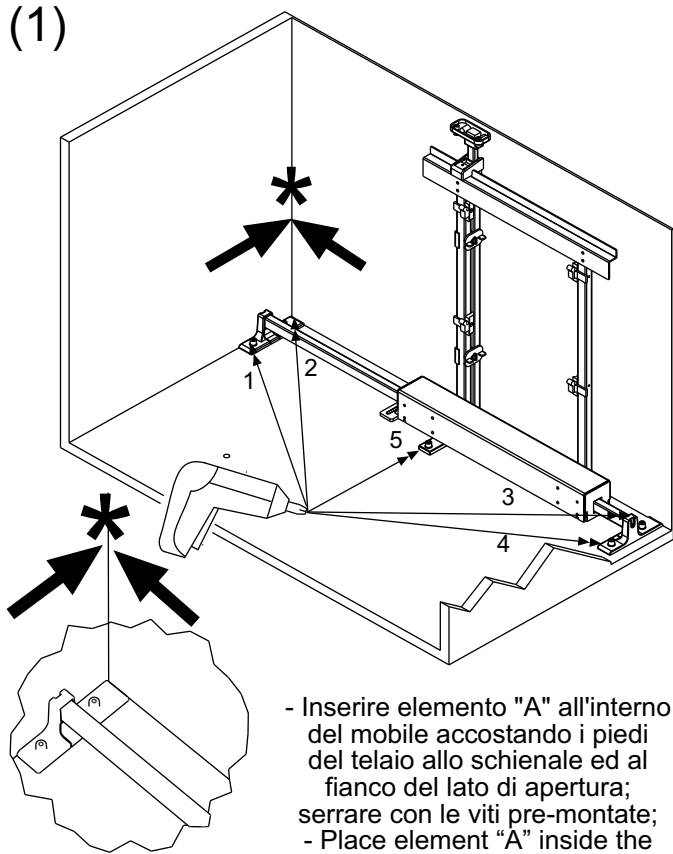


Art. 803 INDICAZIONI DI MONTAGGIO CONSIGLIATE
ASSEMBLY SUGGESTED INSTRUCTION

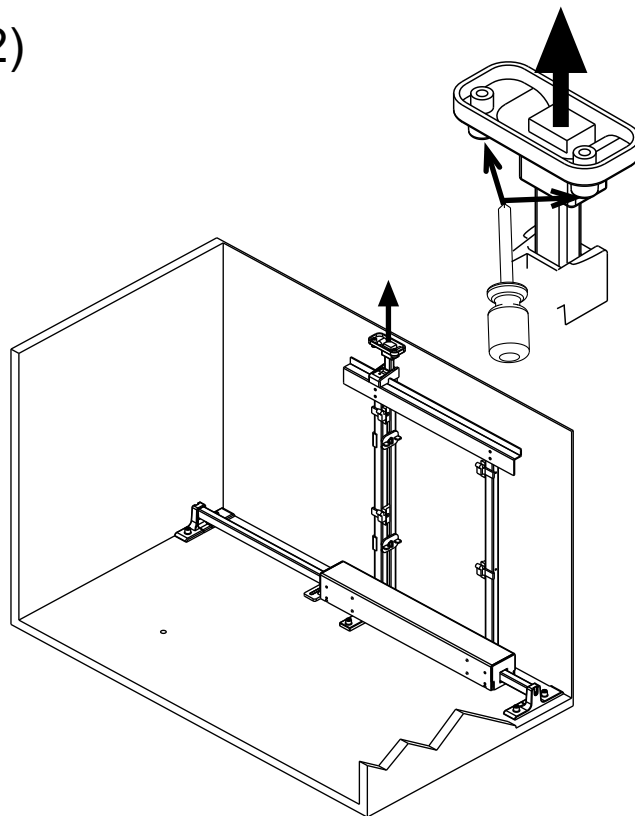


(1)



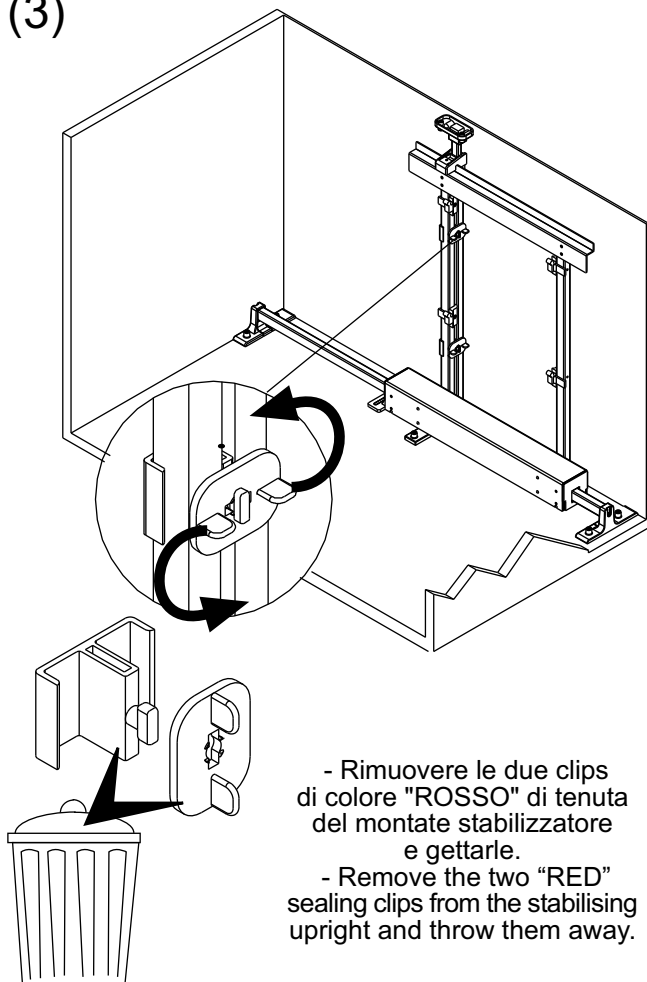
- Inserire elemento "A" all'interno del mobile accostando i piedi del telaio allo schienale ed al fianco del lato di apertura;
- Place element "A" inside the cabinet, positioning the feet of the frame next to the back panel and the opening side; fix in place using the pre-fitted screws;

(2)



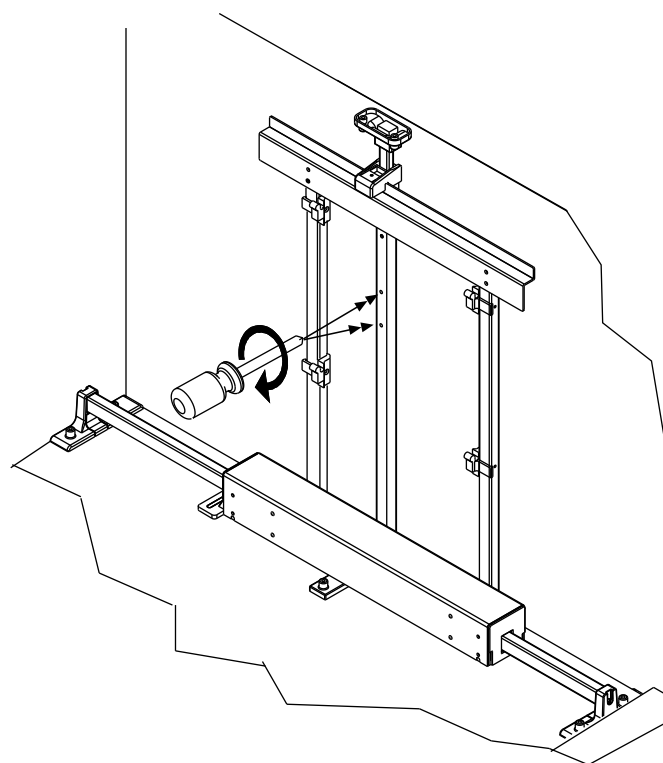
- Sollevare la parte telescopica del montante stabilizzatore posteriore e serrare alla parte superiore del mobile con le viti pre-montate;
- Lift the telescopic part of the rear stabilising upright and fix it to the upper part of the cabinet using the pre-fitted screws;

(3)



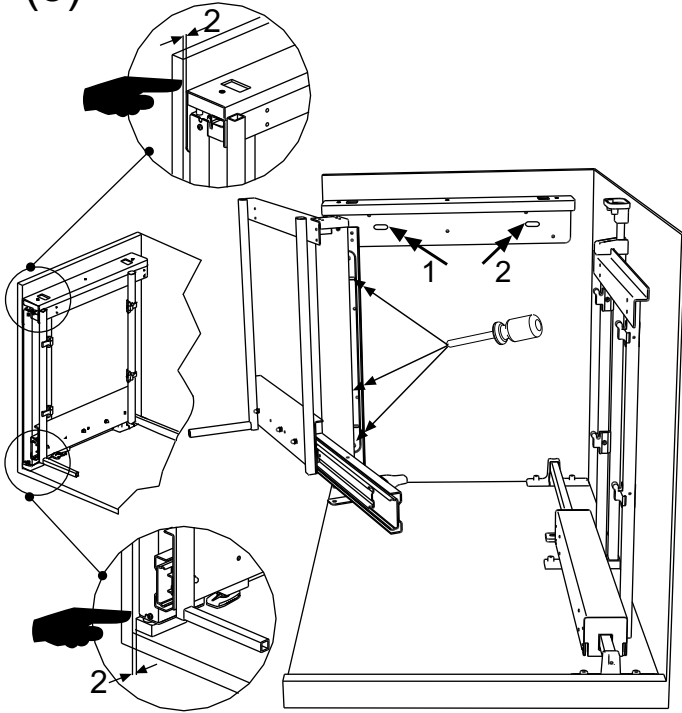
- Rimuovere le due clips di colore "ROSSO" di tenuta del montate stabilizzatore e gettarle.
- Remove the two "RED" sealing clips from the stabilising upright and throw them away.

(4)



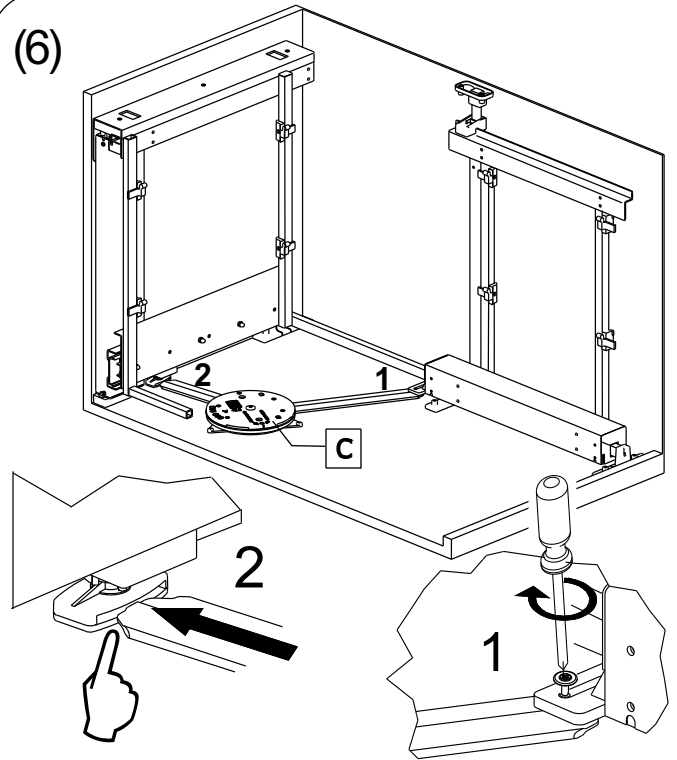
- Far scorrere il carrello e serrare le due viti del montante stabilizzatore;
- Slide the trolley and tighten the two screws on the stabilising upright;

(5)



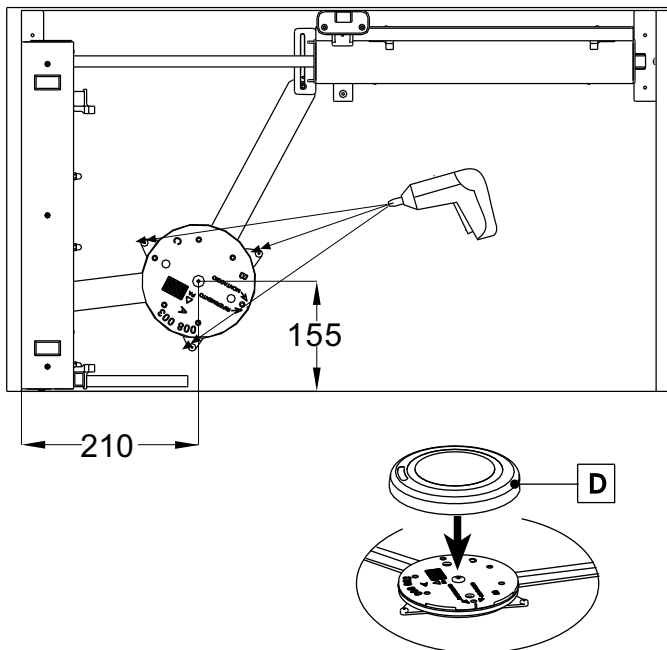
- Inserire l'elemento "B" all'interno del mobile facendo attenzione di posizionarlo a 2 mm dal bordo del mobile. Serrare con le viti in dotazione;
- Place element "B" inside the cabinet, making sure it is positioned 2 mm from the edge of the cabinet. Fix it in place using the screws provided;

(6)



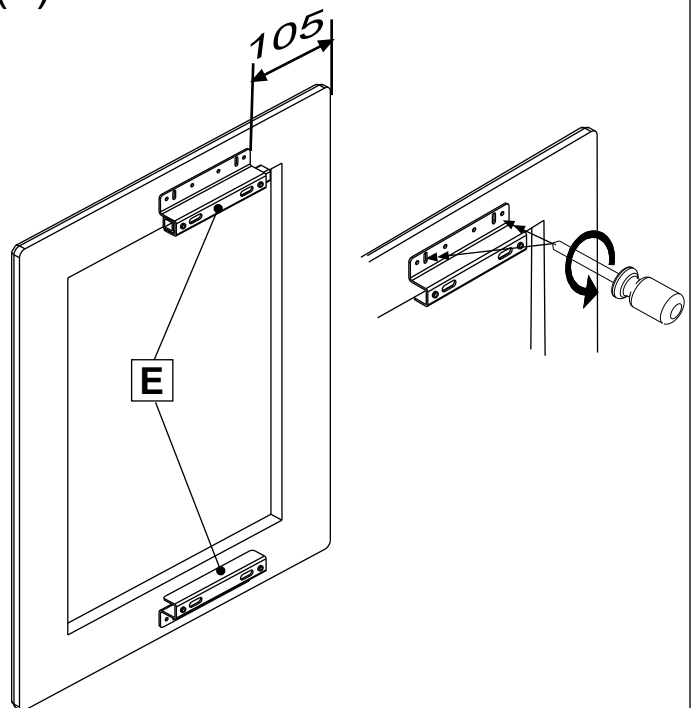
- Inserire il meccanismo di azionamento "C" collegandolo al carrello posteriore con l'apposita vite (dis. 1) ed inserire l'altra leva del meccanismo di azionamento nell'asola dell'elemento "B"(dis. 2);
- Insert the operating mechanism "C" by connecting it to the rear trolley using the corresponding screw (diagram 1) and insert the other operating mechanism lever in the slot for element "B" (diagram 2);

(7)



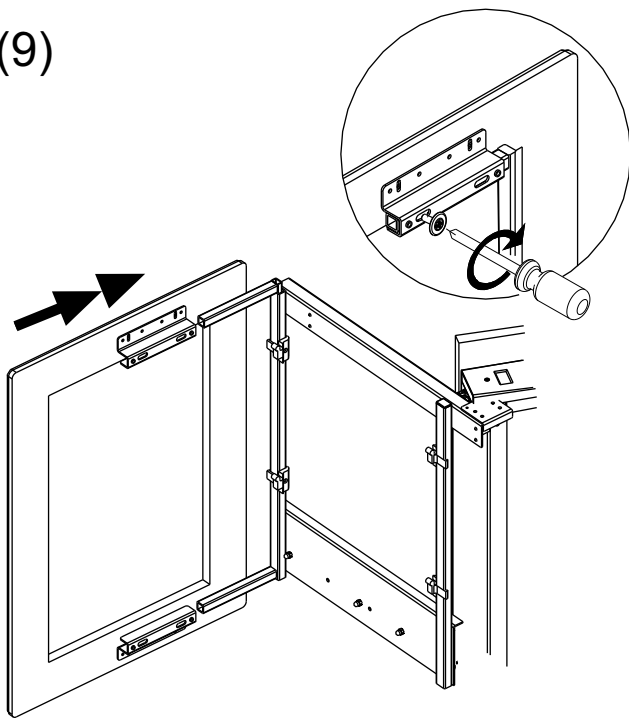
- Posizionare il meccanismo di azionamento serrandolo alla base del mobile con le viti pre-montate (vedi figura);
- inserire la cover "D" copri-meccanismo;
- Position the operating mechanism by fitting it to the base of the cabinet with the pre-fitted screws (see figure);
- fit the mechanism cover "D";

(8)



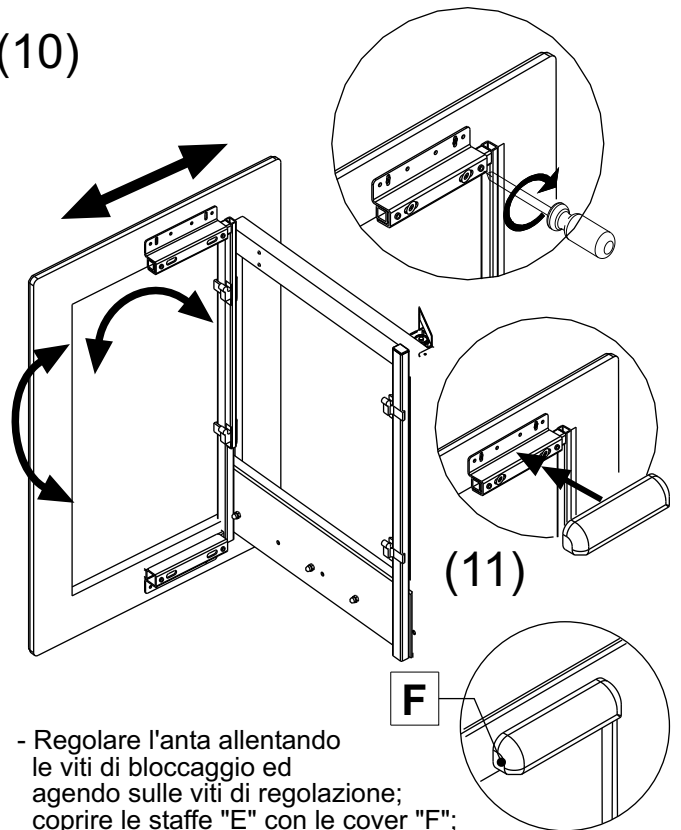
- Posizionare e fissare le staffe "E" all'anta ed avvitare con le viti in dotazione;
- Position and fix the brackets "E" to the door and screw it in place using the screws provided;

(9)



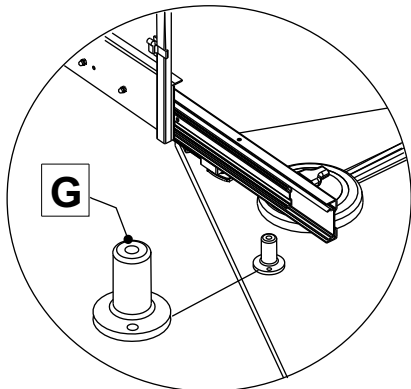
- Collegare l'anta completa delle staffe "E" al meccanismo e bloccare con le viti in dotazione;
- Connect the door, complete with brackets "E", to the mechanism and lock it in place using the screws provided;

(10)



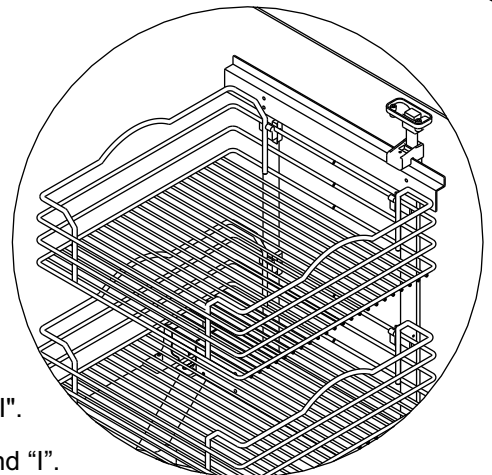
- Regolare l'anta allentando le viti di bloccaggio ed agendo sulle viti di regolazione;
- Adjust the door by loosening the locking screws and by using the adjustment screws;
- coprire le staffe "E" con le cover "F";
- Cover the brackets "E" with the cover "F";

(12)



- Posizionare il supporto di fine corsa "G";
- Position the stop limit support "G";

(13)



- Posizionare i cestelli "H" e "I".
- Position the baskets "H" and "I".

OK

