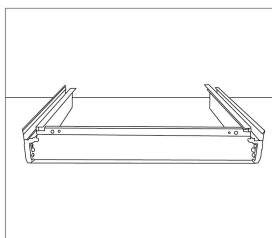
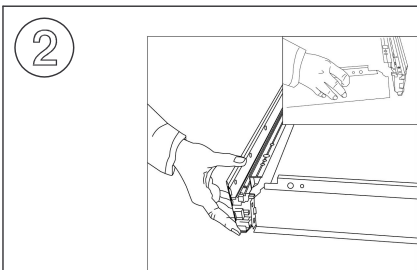
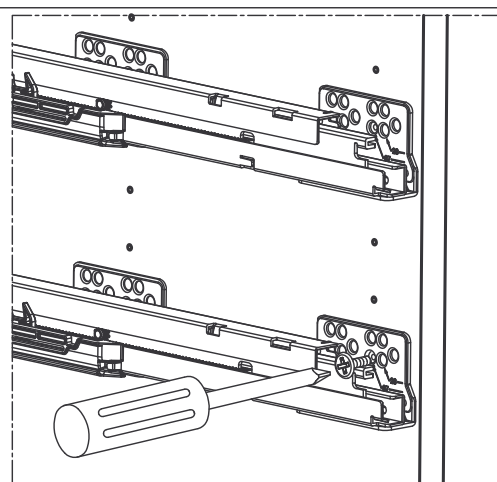


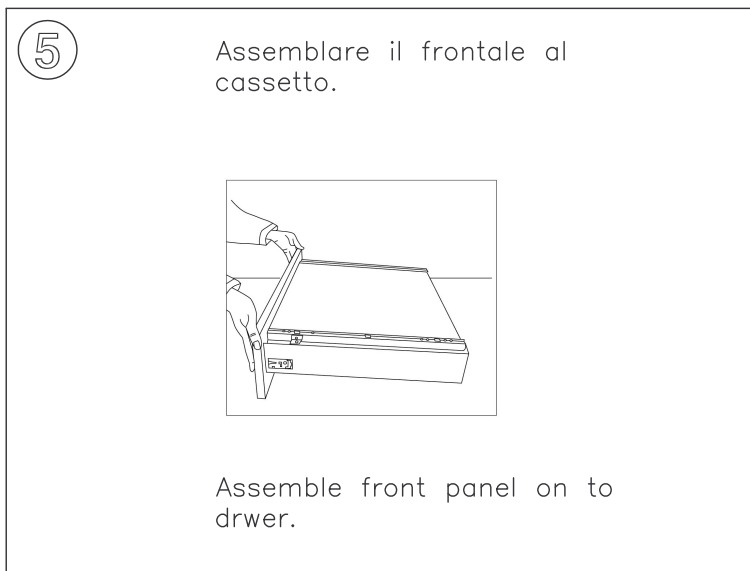
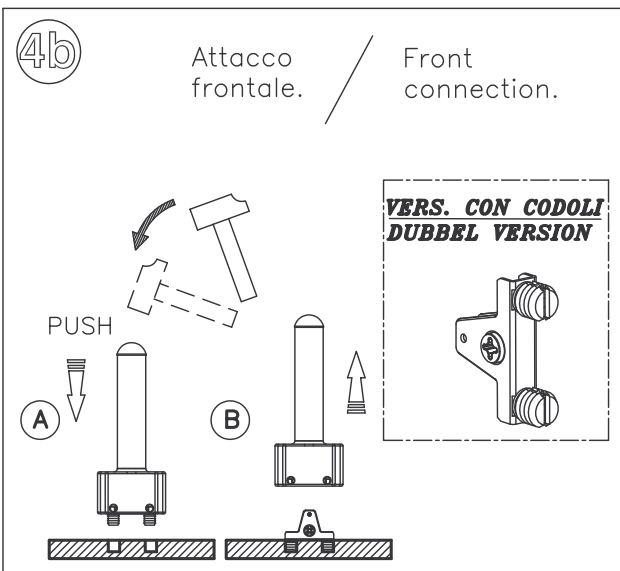
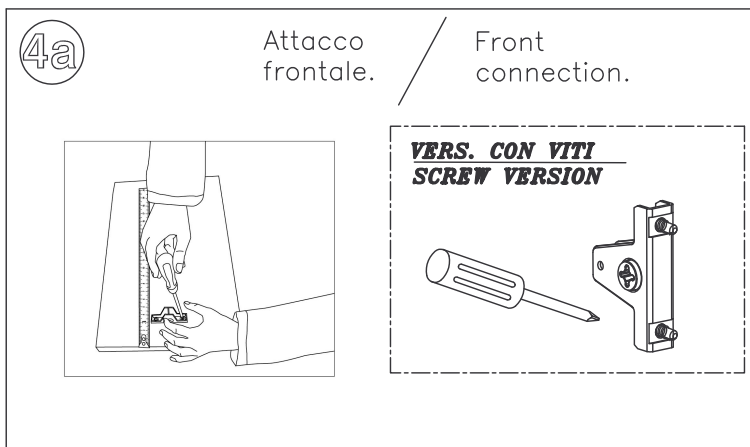
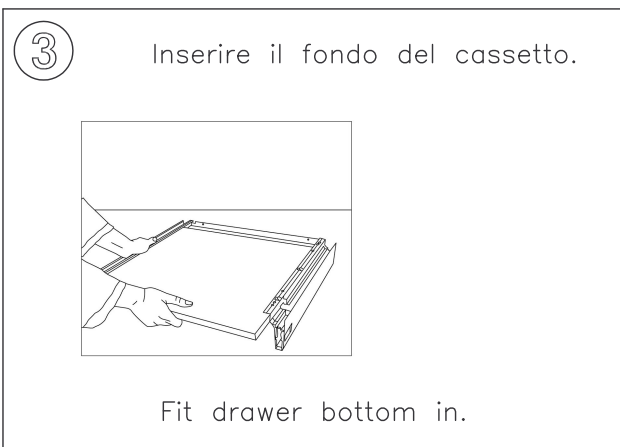
Assemblare il profilo fisso al fianco del mobile, mediante le apposite viti autofilettanti.

Tighten selftapping screws to assemble, fixed rails to furniture side.



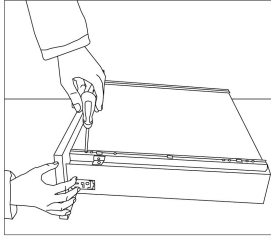
Assemblare i tre componenti, montando a pressione i fianchi con il posteriore.

Assemble three drawer components by pressing the two sides against back panel.



6

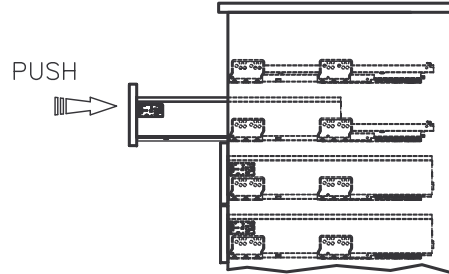
Fissare il fondo mediante le viti autofilettanti.



Tighten selftapping screws to fix bottom.

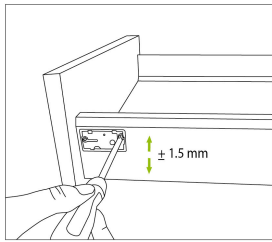
7

Inserire il cassetto nel mobile eseguendo il movimento rappresentato.



Assemble slide drwer in to furniture in the right way as the drawing.

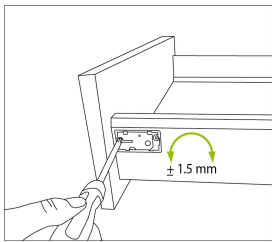
8



**REGOLAZIONE VERTICALE**

**VERTICAL ADJUSTMENT**

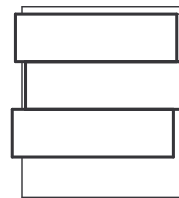
A



**REGOLAZIONE ORIZZONTALE**

**HORIZONTAL ADJUSTMENT**

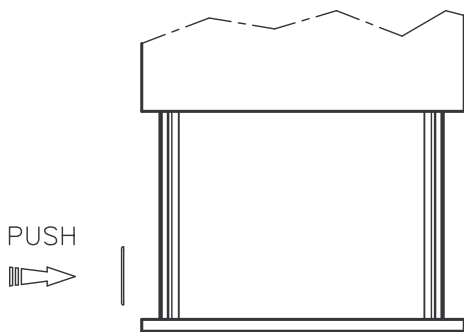
B



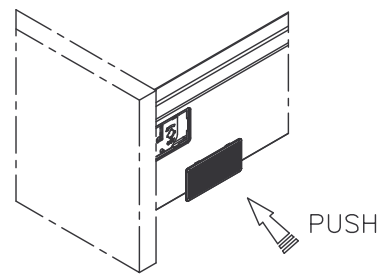
9

Assemblare a pressione le mostrine.

Assemble cover plates



PUSH



PUSH