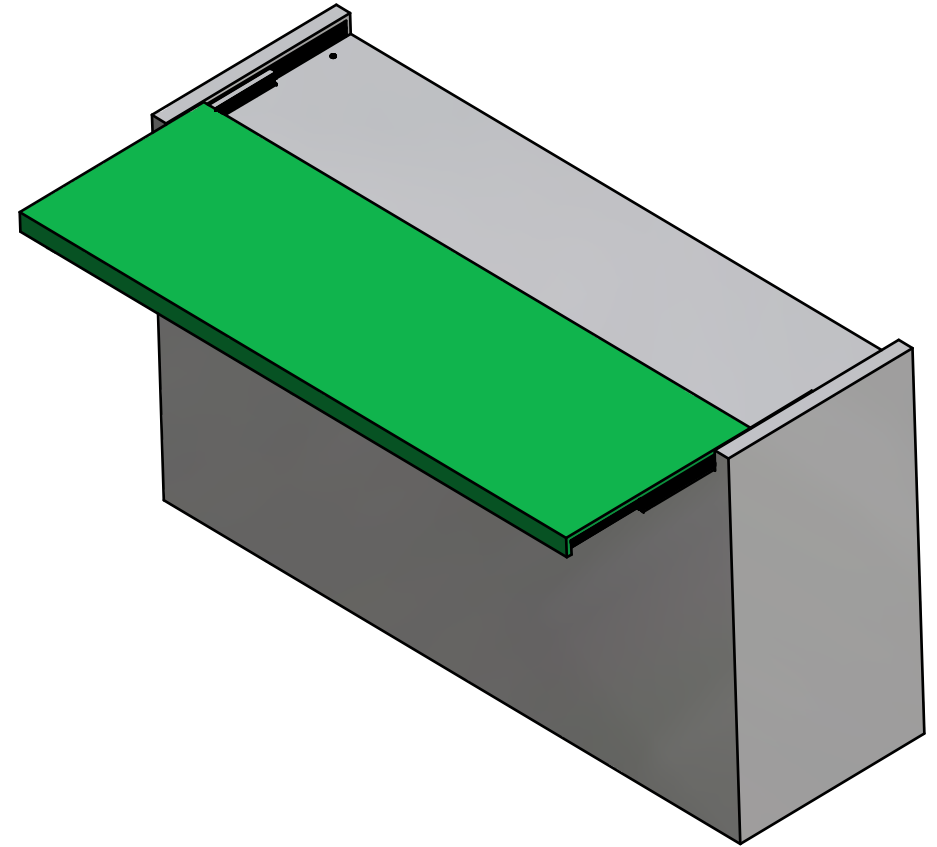
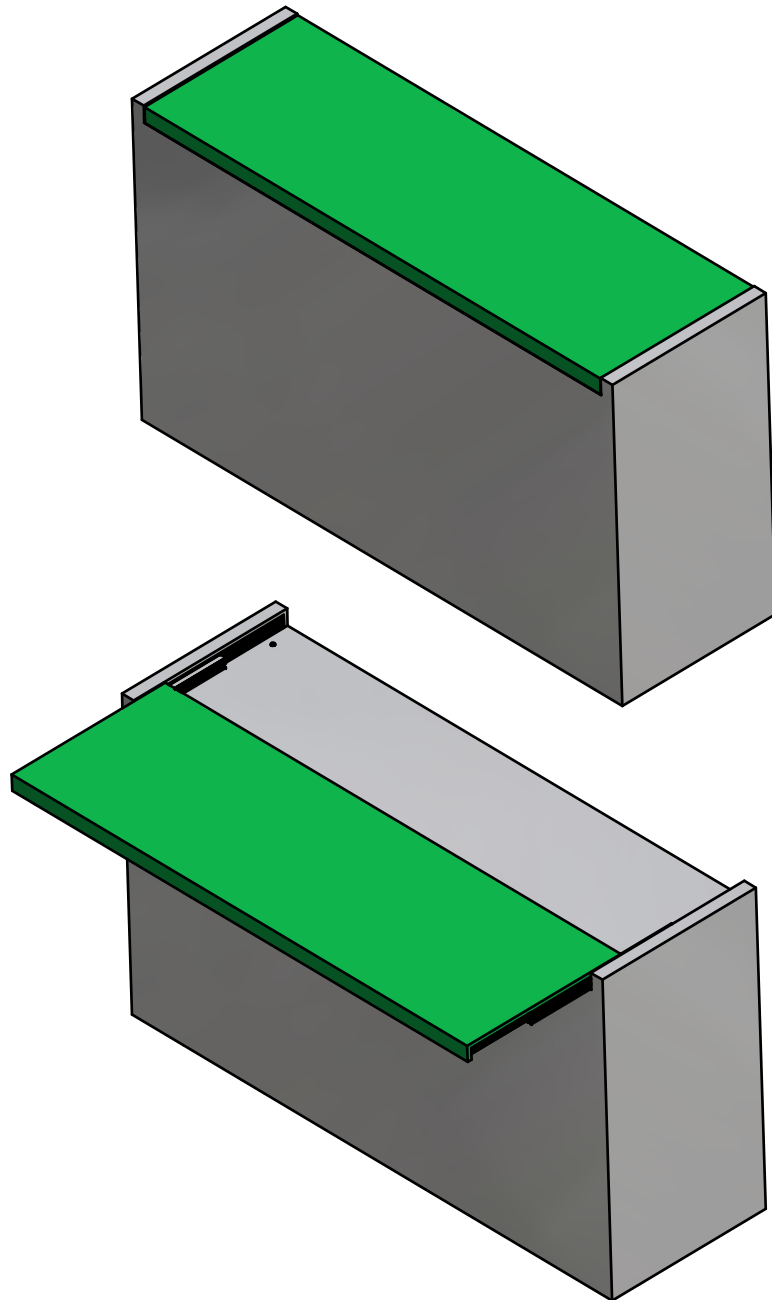


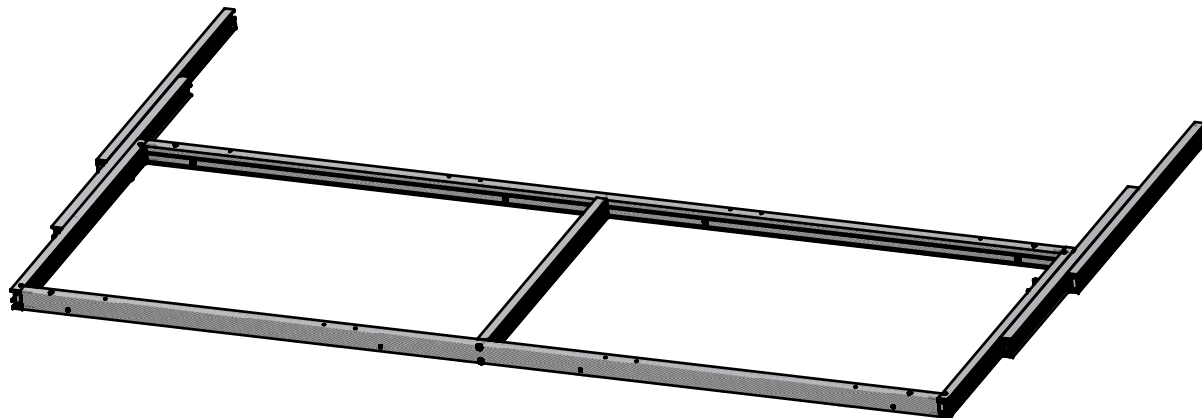
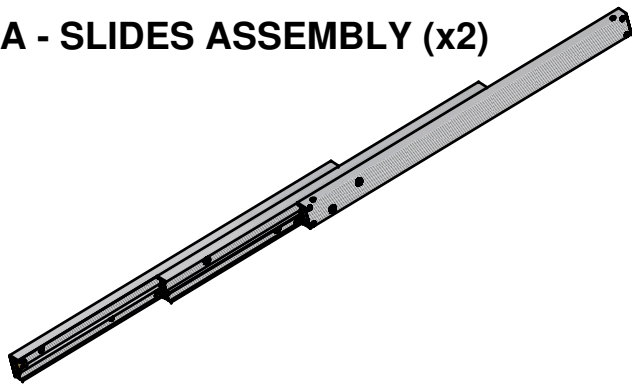
# TECHNICAL DRAWINGS MOUNTING INSTRUCTION



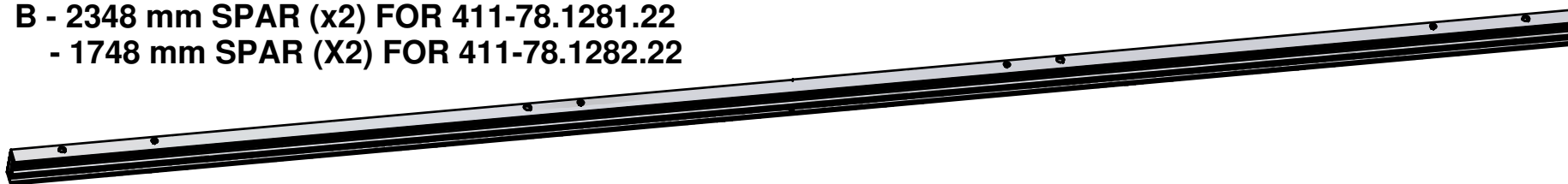
**SNACK**

# THE PACKAGING INCLUDES:

A - SLIDES ASSEMBLY (x2)



B - 2348 mm SPAR (x2) FOR 411-78.1281.22  
- 1748 mm SPAR (X2) FOR 411-78.1282.22



C - 709 mm SPAR (x1)



D -  3.5x14 WOODEN SCREW (x10)

E -  M6x40 SELF THREADING SCREW (x12)

F -  BLOCKING PIN (x2)

G -  3.5x9.5 SELF THREADING SCREW (x8)

# CABINET REQUIRED INTERNAL DIMENSIONS

**WIDTH: 2508 mm (2458 minimum if first slide is inserted in the cabinet side) FOR 411-78.1281.22**

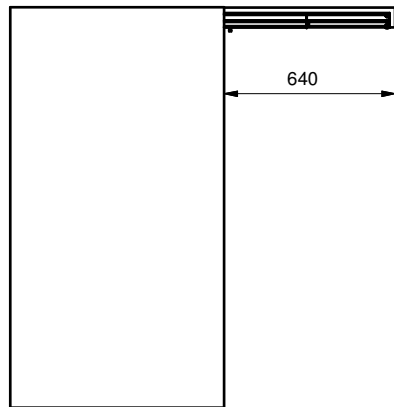
**WIDTH: 1908 mm (1858 minimum if first slide is inserted in the cabinet side) FOR 411-78.1282.22**

**DEPTH: min. 800 mm**

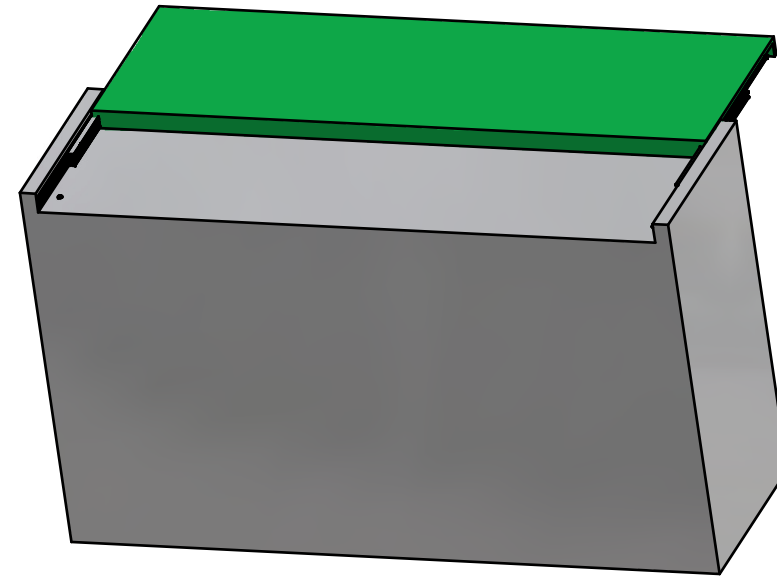
**HEIGHT: min. 80 mm**

**TABLE PLANE THICKNESS: 19 mm**

**TOTAL LENGTH OUTSIDE THE CABINET: 640 mm**



HEIGHT: min 80

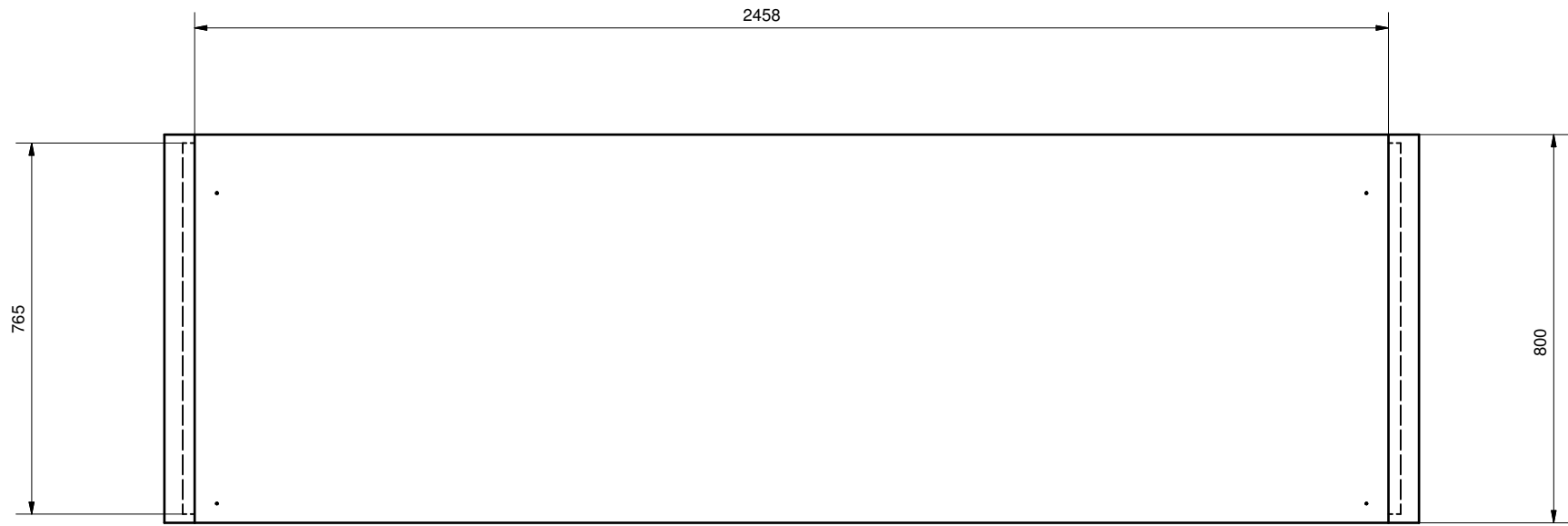


DEPTH: 800



WIDTH: 2508-2457 / 1908-1857 mm

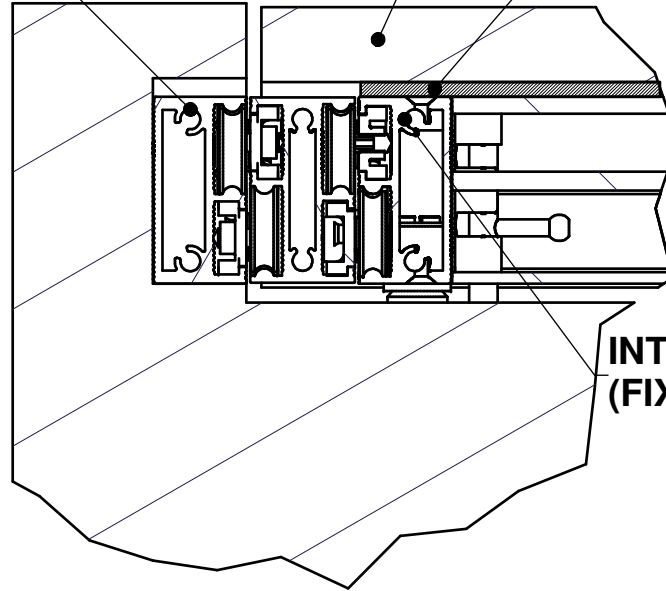
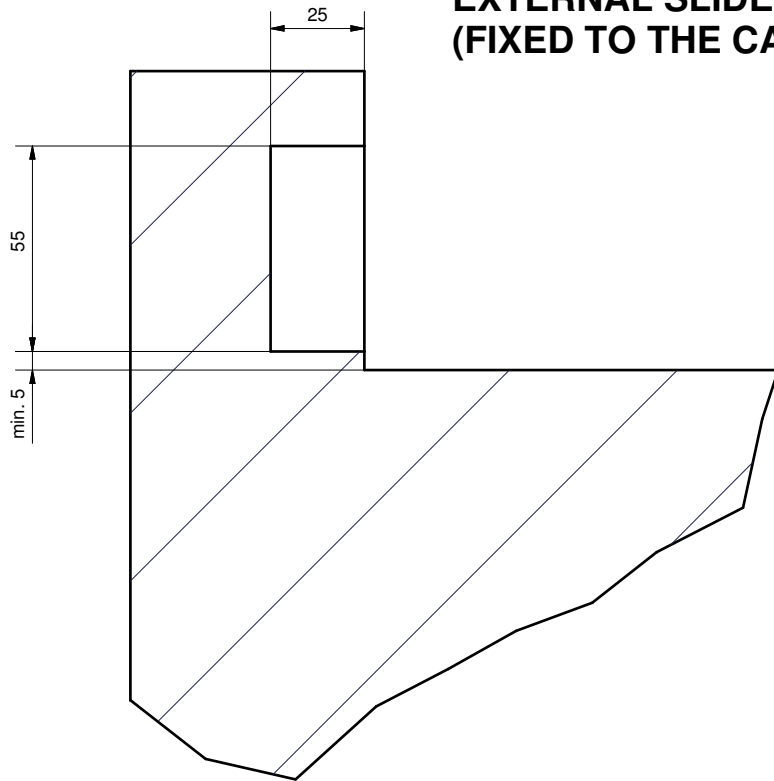




**EXTERNAL SLIDE  
(FIXED TO THE CABINET SIDE)**

**TOP**

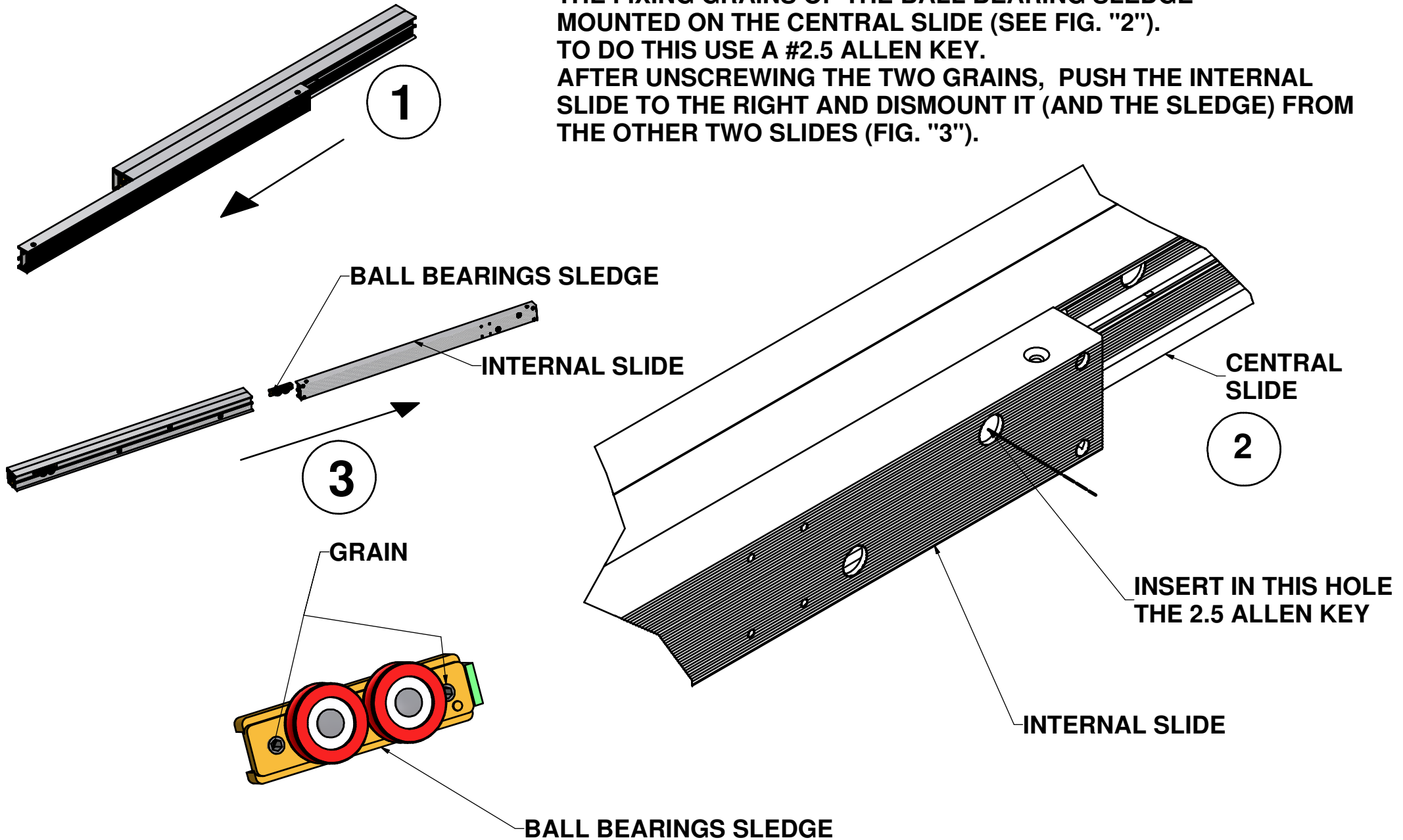
**INSERT A SPACER OVER THE  
INTERNAL SLIDE**



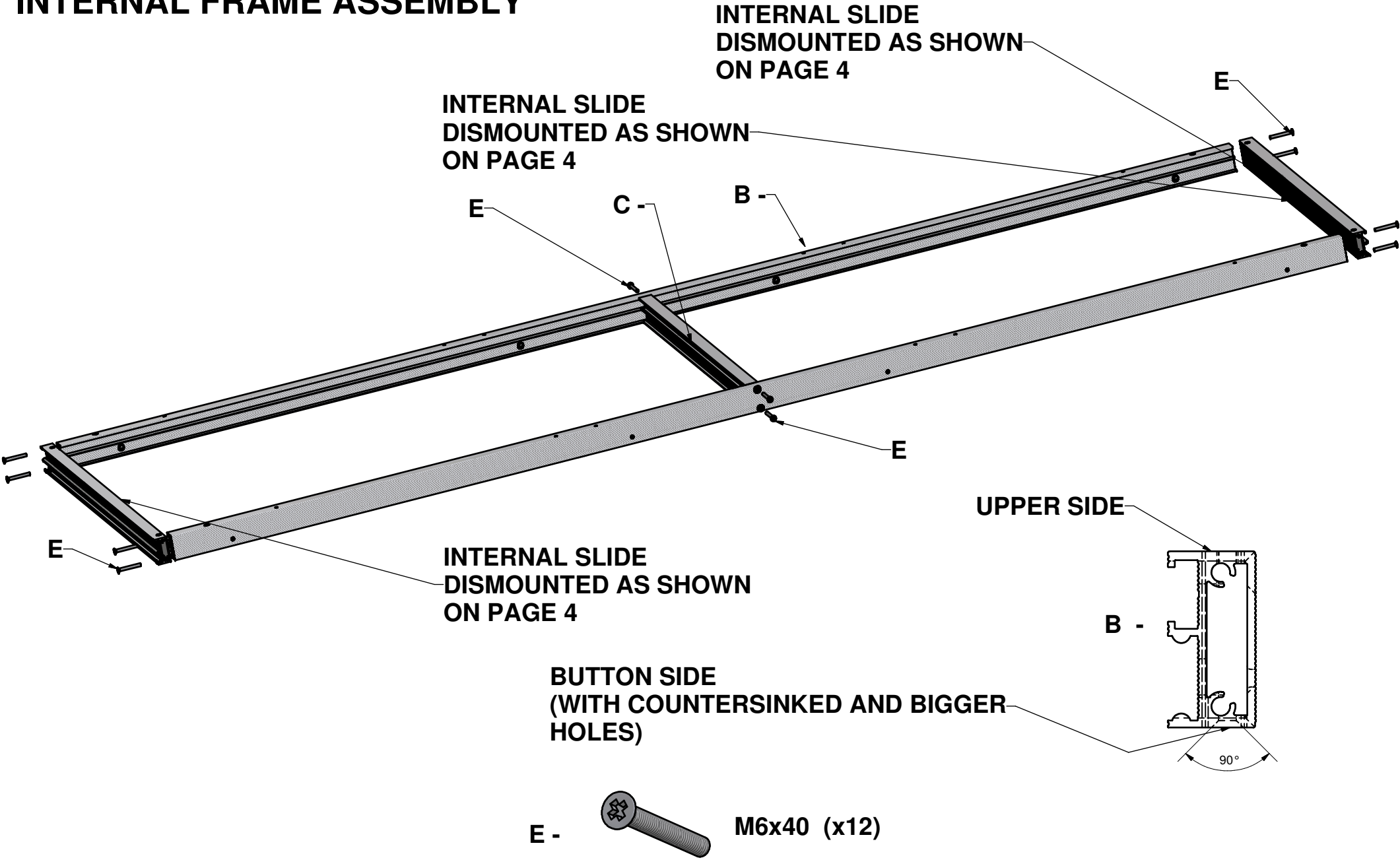
**INTERNAL SLIDE  
(FIXED TO THE TOP)**

# SLIDES DISMOUNTING

TO DISASSEMBLY THE INTERNAL SLIDE, PUSH IT TO THE LEFT TILL IT STOPS (SEE FIG."1").  
USING THE INDICATED HOLE, UNSCREW THE FIXING GRAINS OF THE BALL BEARING SLEDGE MOUNTED ON THE CENTRAL SLIDE (SEE FIG. "2").  
TO DO THIS USE A #2.5 ALLEN KEY.  
AFTER UNSCREWING THE TWO GRAINS, PUSH THE INTERNAL SLIDE TO THE RIGHT AND DISMOUNT IT (AND THE SLEDGE) FROM THE OTHER TWO SLIDES (FIG. "3").

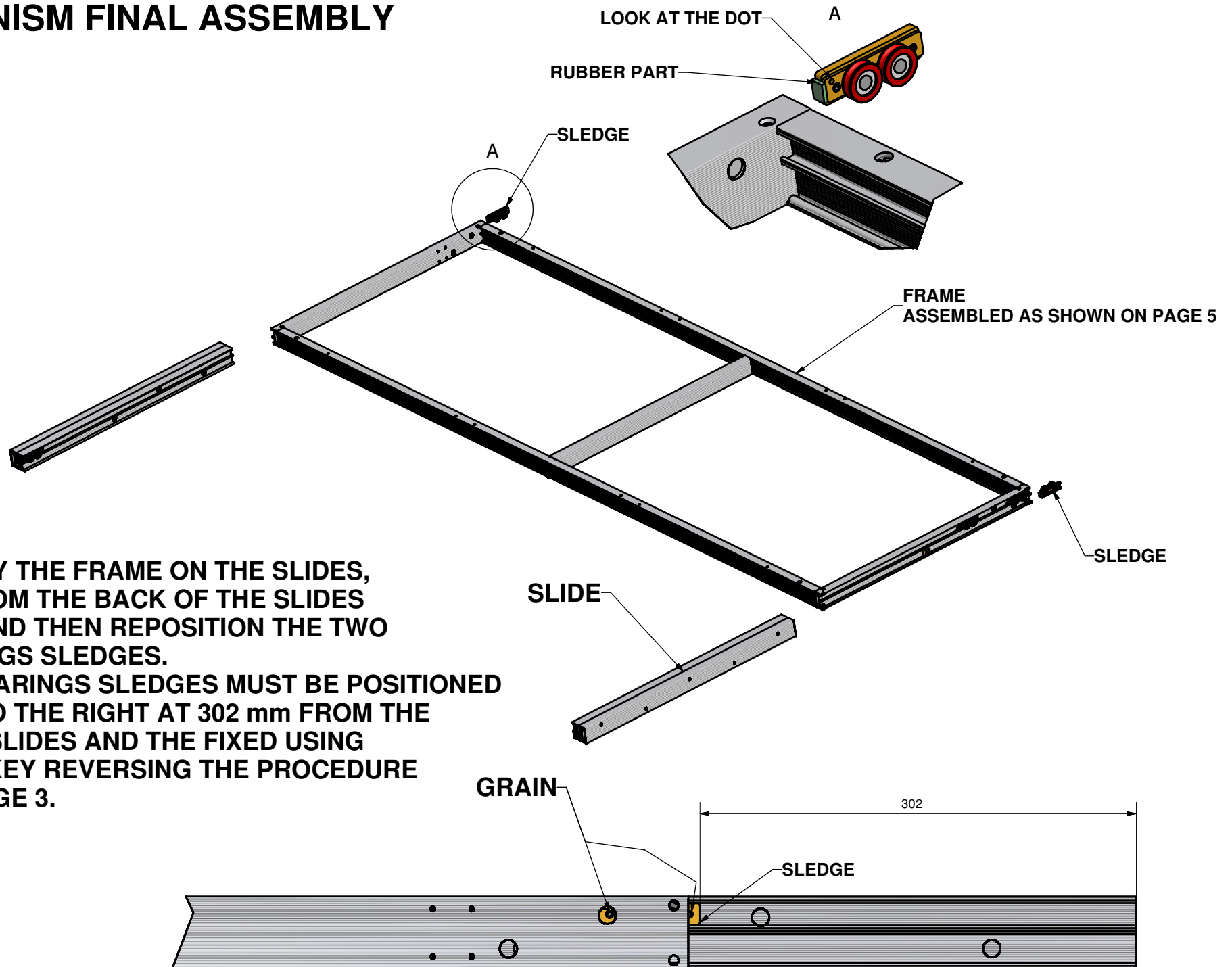


# INTERNAL FRAME ASSEMBLY



TO ASSEMBLY THE INTERNAL FRAME, USE THE INCLUDED M6x40 SCREWS. ATTENTION TO THE "B" BARS, THEY HAVE AN UPPER SIDE AND A BUTTON ONE.

# MECHANISM FINAL ASSEMBLY



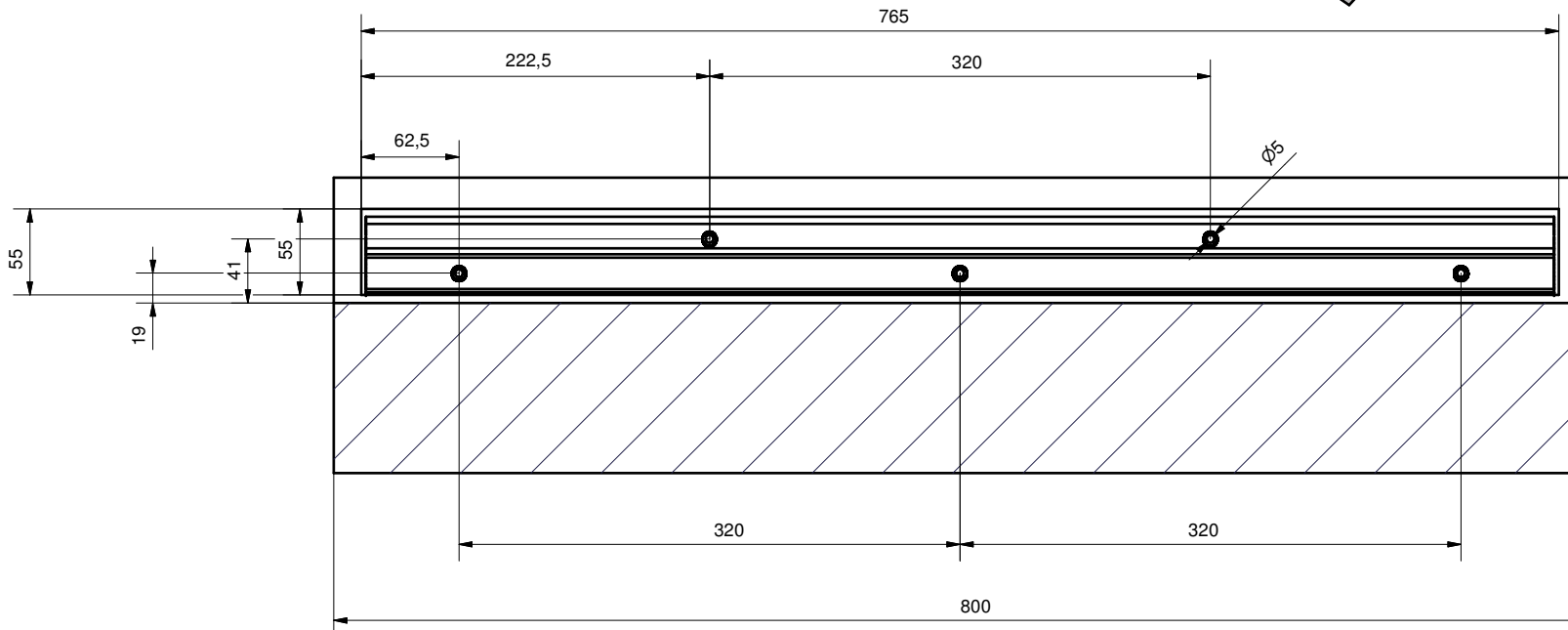
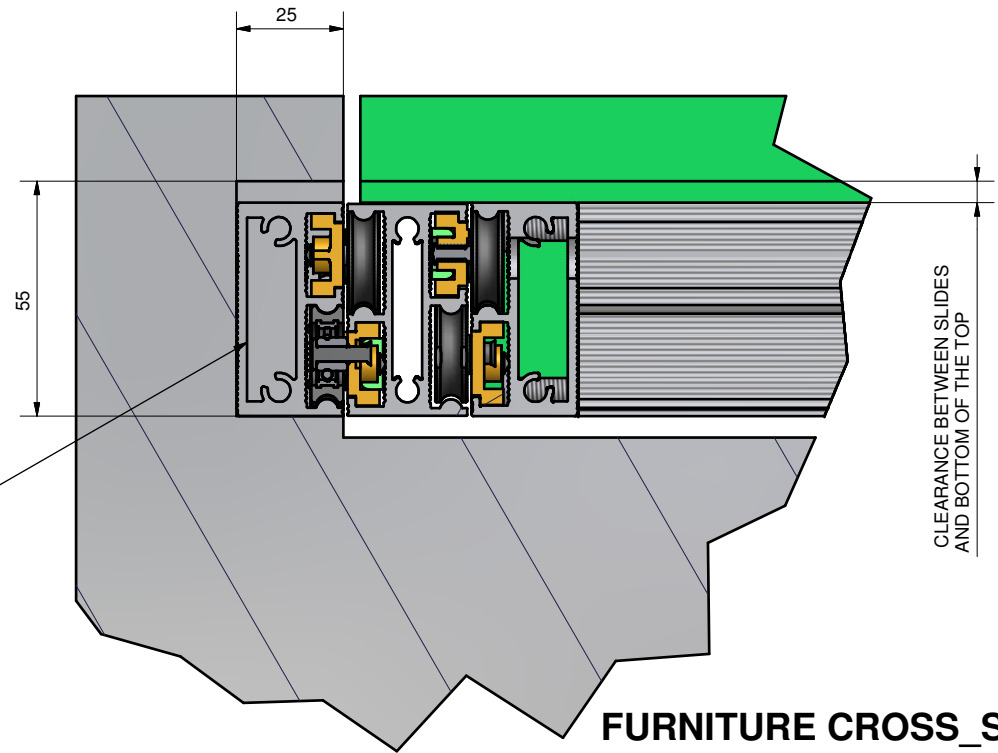
TO ASSEMBLY THE FRAME ON THE SLIDES, INSERT IT FROM THE BACK OF THE SLIDES AS SHOWN AND THEN REPOSITION THE TWO BALL BEARINGS SLEDGES. THE BALL BEARINGS SLEDGES MUST BE POSITIONED AS SHOWN TO THE RIGHT AT 302 mm FROM THE END OF THE SLIDES AND THE FIXED USING A 2.5 ALLEN KEY REVERSING THE PROCEDURE SHOW ON PAGE 3.

# ASSEMBLY TO THE CABINET SIDE

TO ASSEMBLY THE MECHANISM ON THE CABINET, USE THE "D" WOODEN SCREWS INSERTED IN THE FIVE HOLES IN THE EXTERNAL SLIDES.

EXTERNAL SLIDE

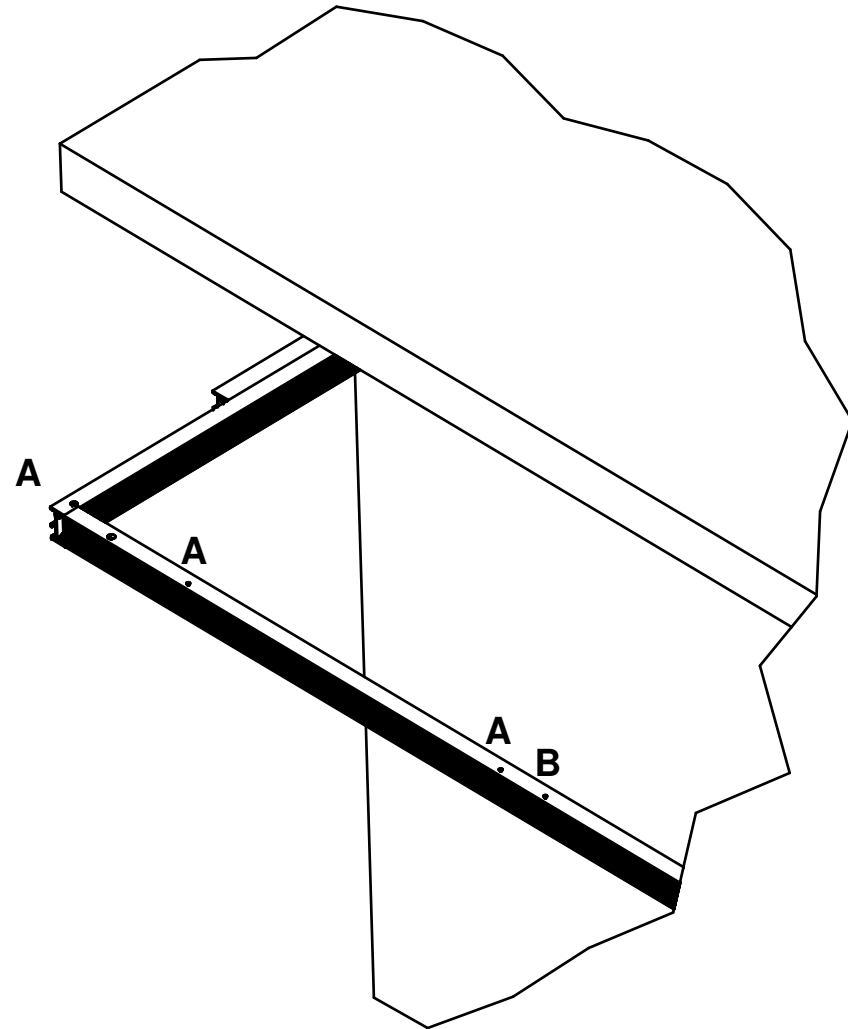
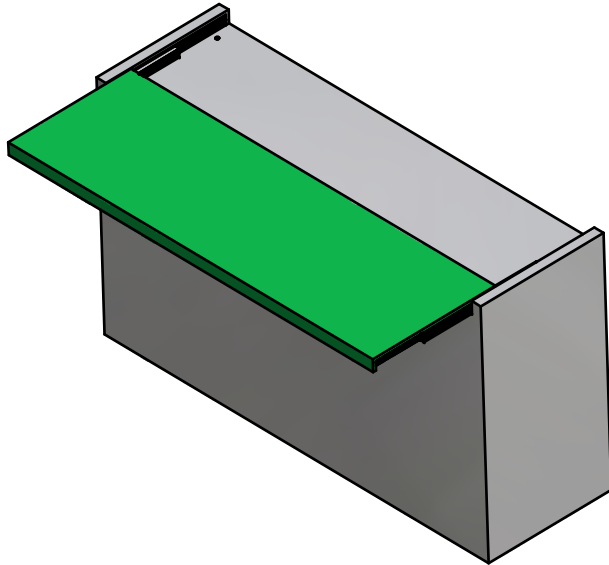
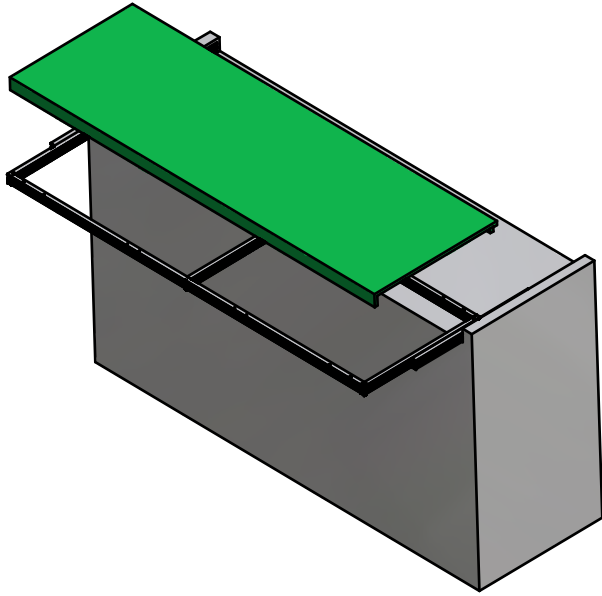
D -  (x5)





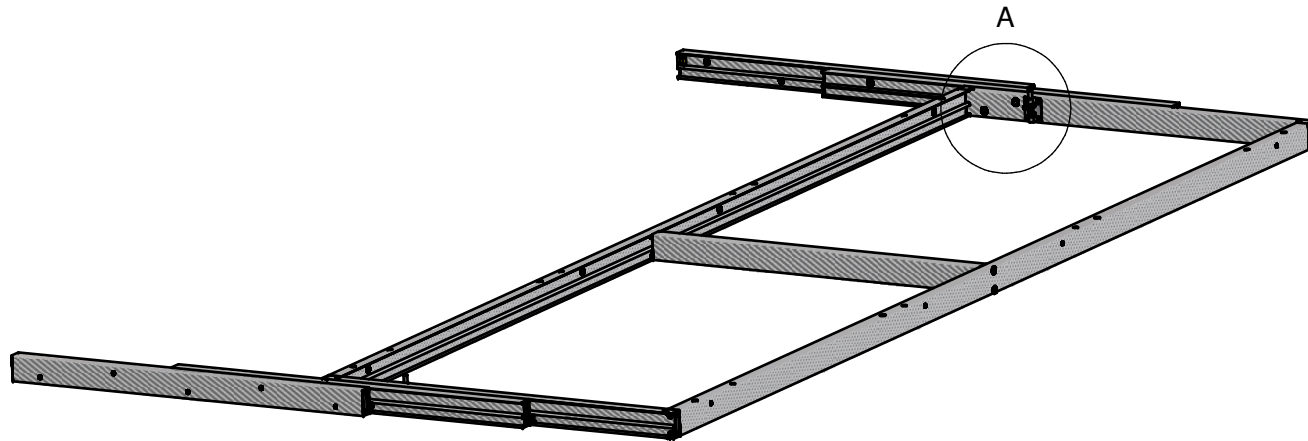
# TABLE TOP

TO FIX THE TABLE TOP, USE THE 8 DIAM. 6 HOLES (TWO IN EACH INTERNAL SLIDE AND FOUR IN EACH SPAR). THESE HOLES ARE INDICATED AS "A" ON THE FIGURE. ON EACH SPAR THERE ARE TWO ADDITIONAL M6 HOLES AT YOUR DISPOSAL FOR FITTING PROPER SPACER TO BE INSERTED BETWEEN THE FRAME AND THE TOP. THESE HOLES ARE INDICATED AS "B" ON THE FIGURE. IT IS SUGGESTED TO KEEP SOME CLEARANCE (MINIMUM 2 mm) BETWEEN THE TOP OF THE SLIDES AND THE BOTTOM OF THE TOP (SEE SECTION ON PAGE 4 AND 7).

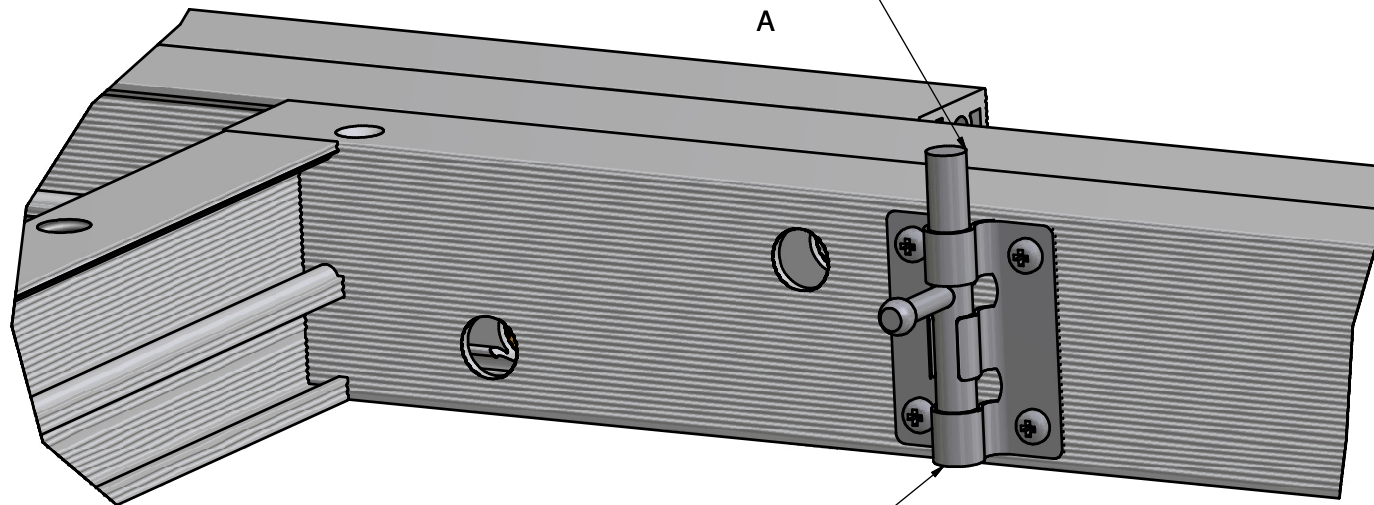
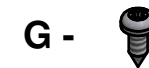
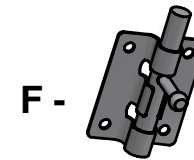


# BLOCKING PINS

IF NECESSARY, MOUNT THE TWO BLOCKING PINS (F), ONE FOR EACH SIDE.  
USE THE 3.5 SCREWS (G) TO FIX THEM



THIS PART MUST GO UP WHEN YOU WANT TO MOVE THE TOP. IT SHOULD ENTER IN A HOLE DRILLED IN THE TOP



THIS END OF THE PIN GOES DOWN WHEN THE MECHANISM IS OPENED AND MUST ENTER IN A HOLE DRILLED ON THE CABINET