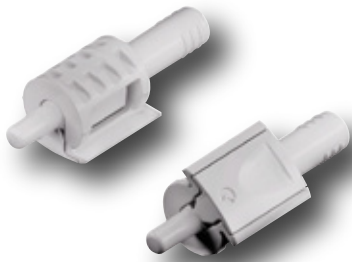
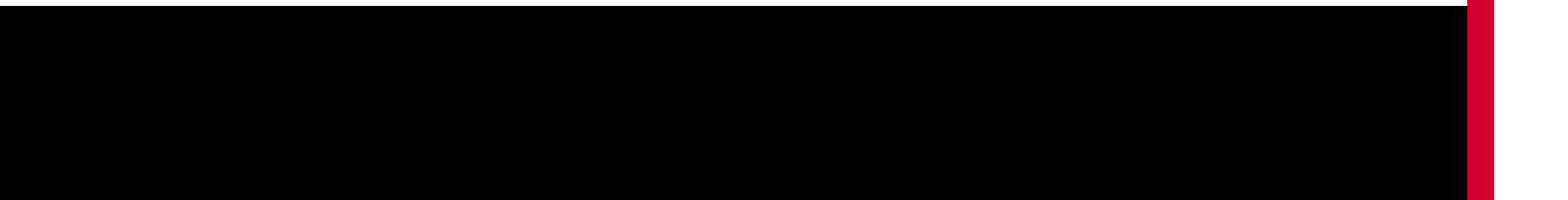


KERALA





**KERALA** is the new shelf support boasting a captivating design, especially conceived by Italiana Ferramenta Srl for kitchen furniture. **KERALA** is made of two elements in technoplastic: an actual support to be slotted into the panel and a special dowel to be inserted into the side. The installation is carried out very easily because the dowel locks into the support simply by pressing the shelf downwards. The particular shape of the components guarantees the locking of the shelf and, therefore, the transportation of the furniture with the shelves already assembled.

As for the installation, also the disinstallation does not require the use of any tool, as it is simply carried out by sliding the clip backwards.

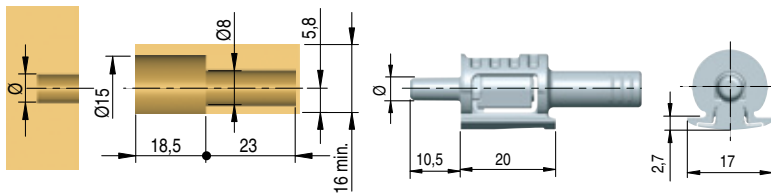
For shelf minimum 16mm thick.

Engineering plastic

In accordance with the European regulations UNI EN 14749/05.



**DRILLING PLAN**

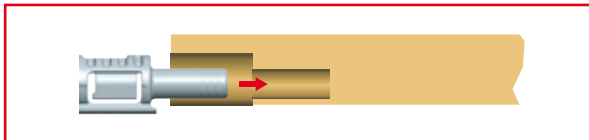


Ø(mm)	Part. no	Description	Finish
5	12001010AB	Kerala dowel Ø 5	White
3	12001020AB	Kerala dowel Ø 3	White
-	12001000AB	Kerala shelf support	White

**ASSEMBLING**

1

KERALA INSTALLATION INSIDE THE SHELF

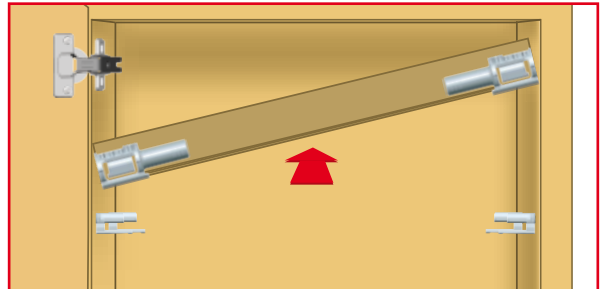


INSERT THE DOWEL INTO THE SIDE PANEL



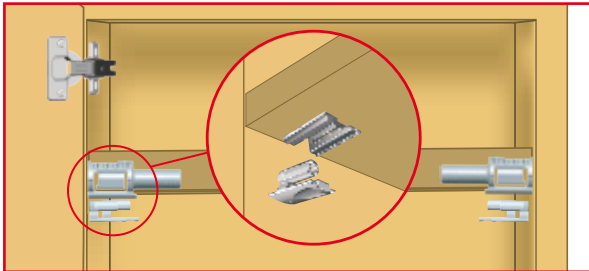
2

INSERT THE SHELF DIAGONALLY INTO THE CABINET (ALSO WITH DOOR ALREADY ASSEMBLED)



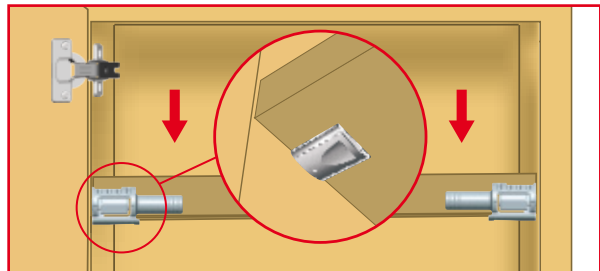
3

PLACE THE SHELF OVER THE SIDE DOWELS



4

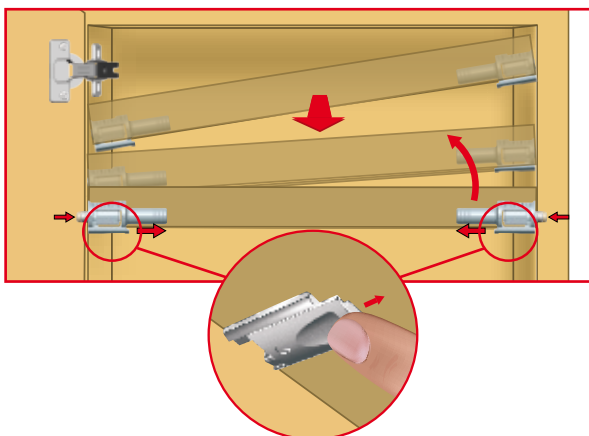
PLACE THE SHELF OVER THE SIDE DOWELS



**SHELF REMOVAL AND REPOSITIONING**

SHELF REMOVAL

INSERT THE FINGERNAIL INTO THE SLIDING CLIP SOCKETS PLACED UNDERNEATH THE SHELF AND PULL THEM BACKWARDS UNTIL ALL THE FOUR PINS RETREAT COMPLETELY INTO KERALA. EASE THE SHELF DIAGONALLY OUT.



SHELF REPOSITIONING

PLACE THE SHELF ON THE REQUIRED LEVEL AND PUSH FORWARDS THE SLIDING CLIPS UNTIL ALL THE FOUR PINS ARE FULLY INSERTED INTO THE HOLES.

