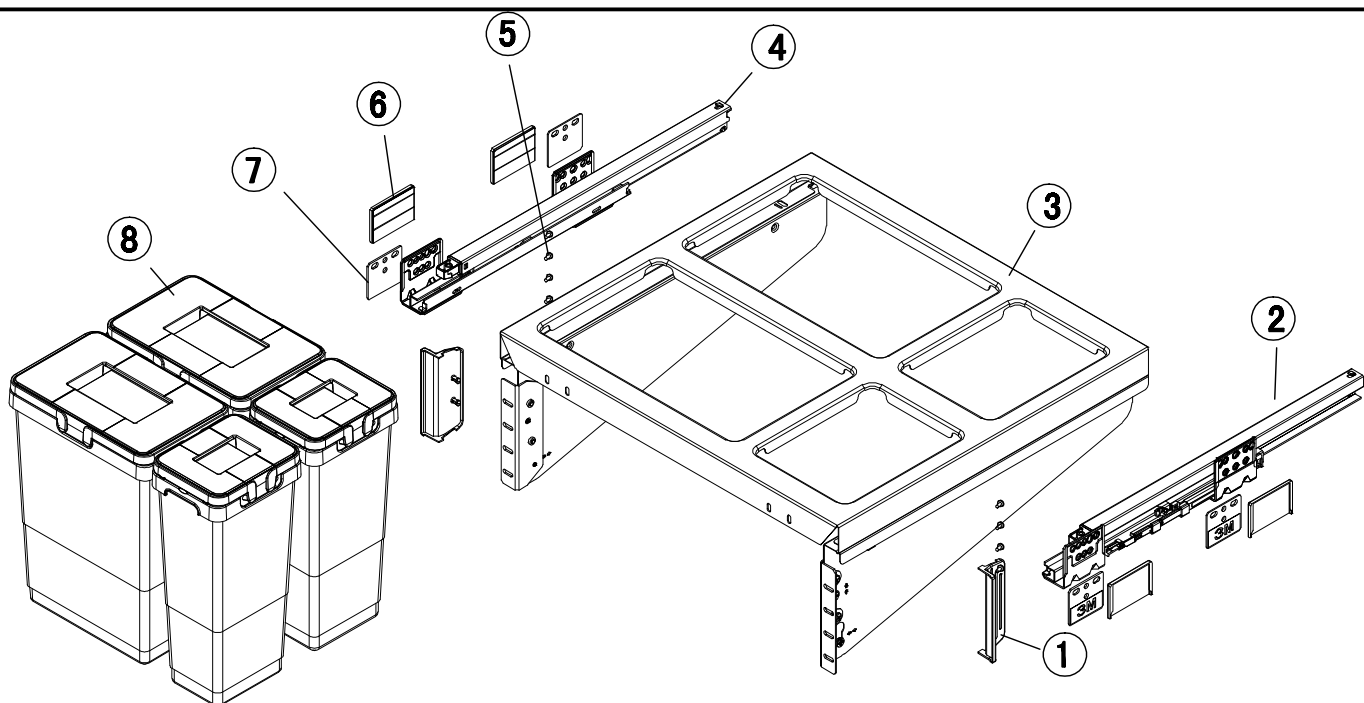


Dustbin Drawer
Installation Instruction

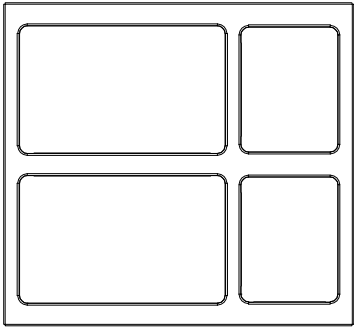
KAUTÄT



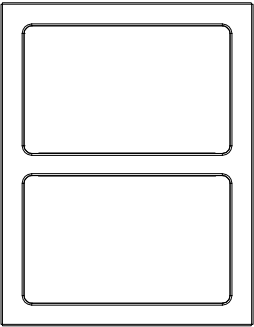
Notice: ⑦ is only for 16mm panel, 18mm panel doesn't need.

No.	Name of components	Quantity
1	Plastic cover	2
2	Slide (R)	1
3	Steel frame	1
4	Slide (L)	1
5	M5X12 Screw	8
6	Slide plastic cover	4
7	steel pad	4
8	Dustbin	Refer to below configuration

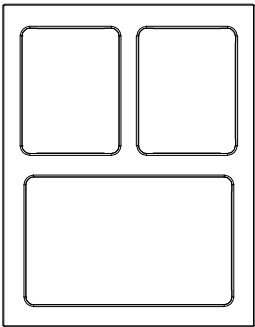
Cabinet Width	Configuration of Dustbin
D600	Large Dustbin*2 +Small Dustbin*2
D450(A)	Large Dustbin*2
D450(B)	Large Dustbin +Small Dustbin*2
D400	Medium Dustbin*2



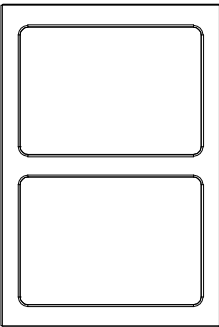
D600



D450(A)



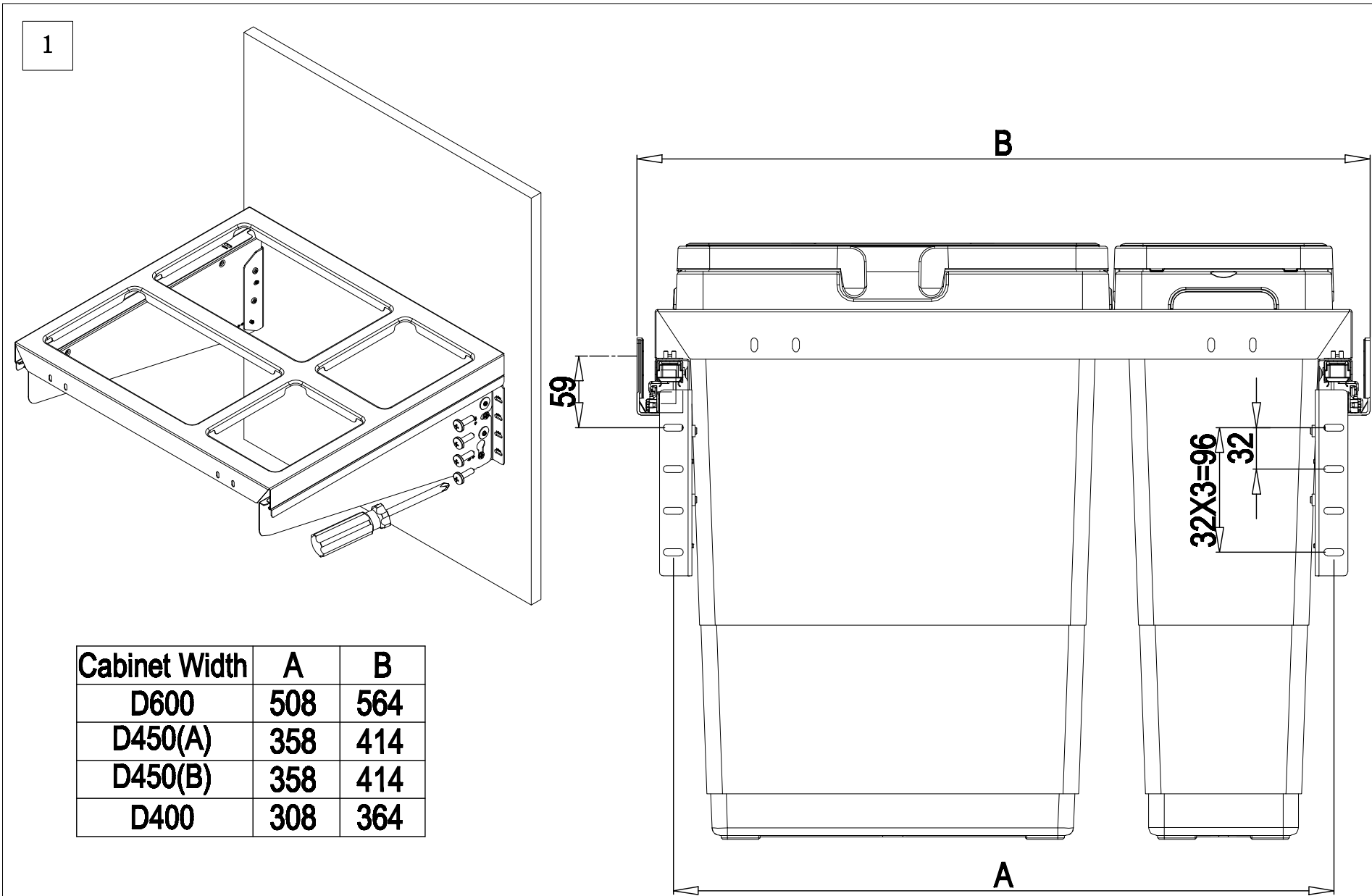
D450(B)



D400

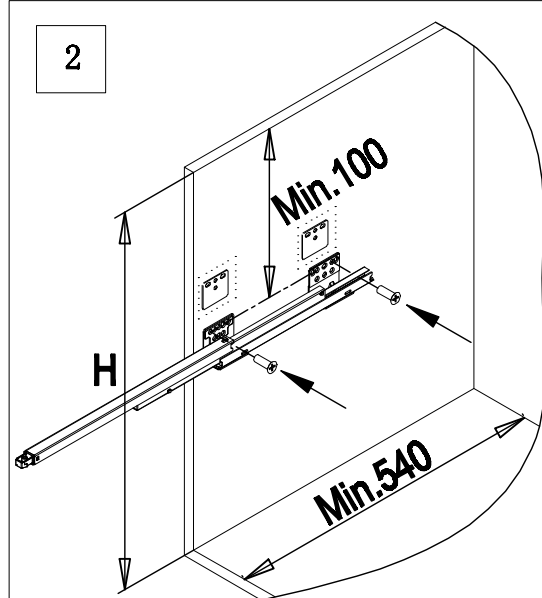
Plastic Dustbin:High Dustbin(460mm);
Low Dustbin(330mm).

Installation and Adjustment of Dustbin Drawer :



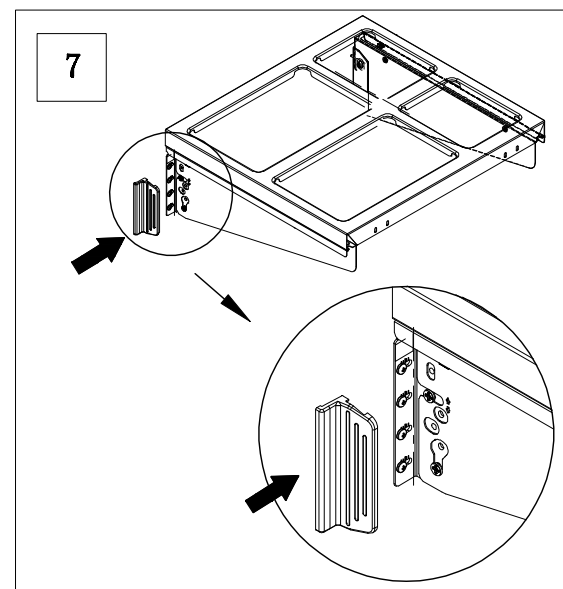
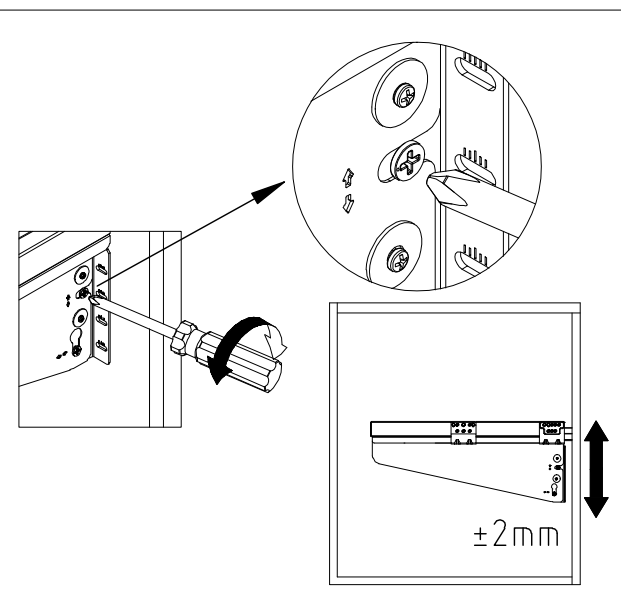
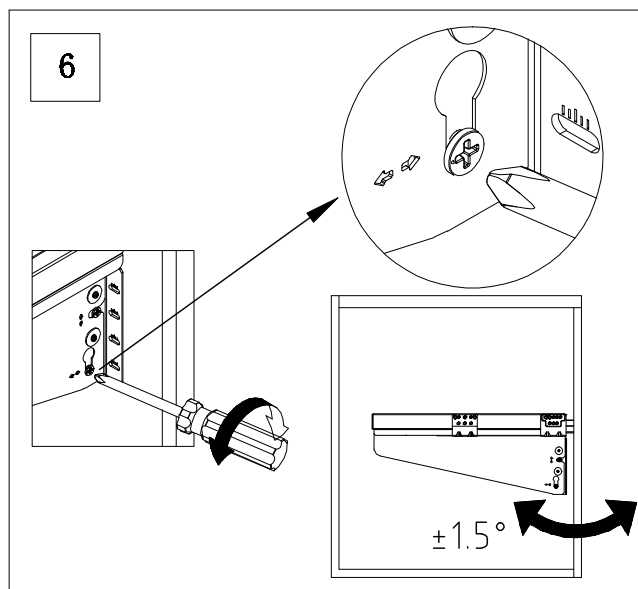
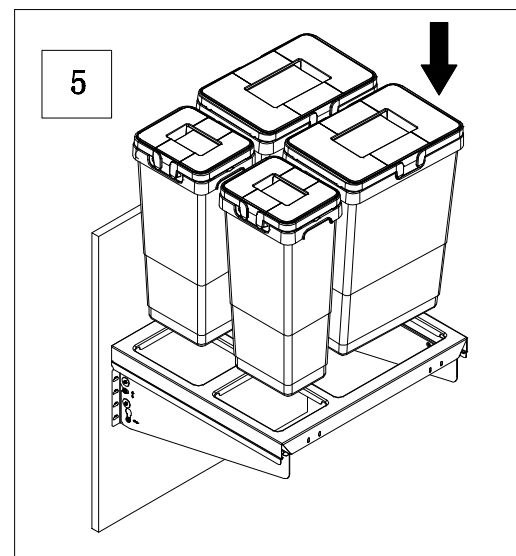
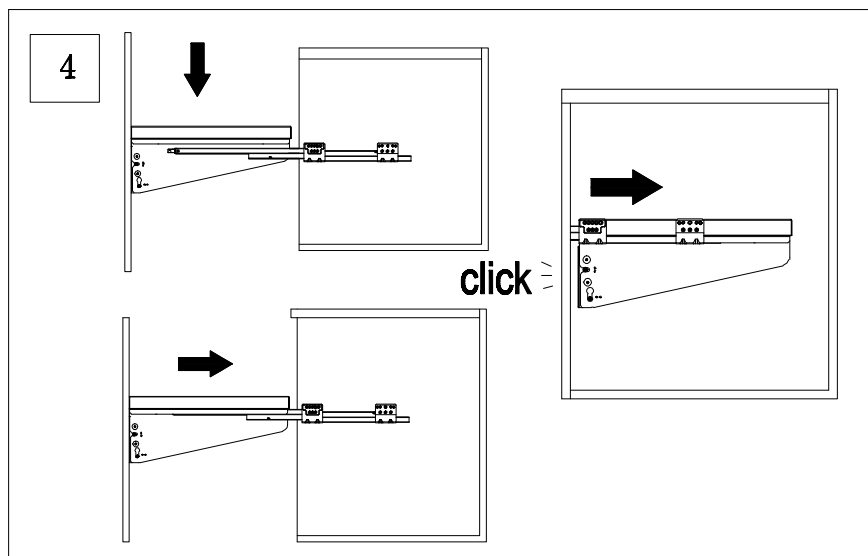
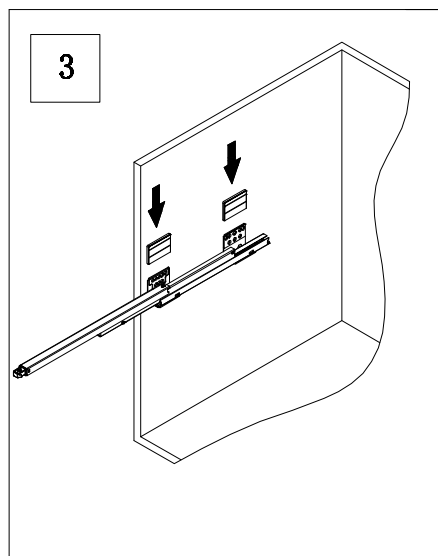
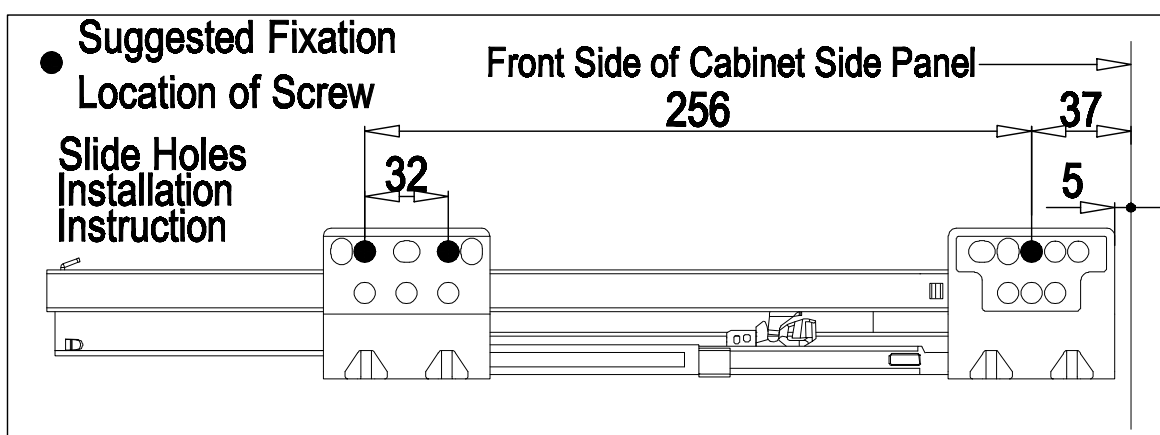
Cabinet Width	A	B
D600	508	564
D450(A)	358	414
D450(B)	358	414
D400	308	364

KAUTÄT

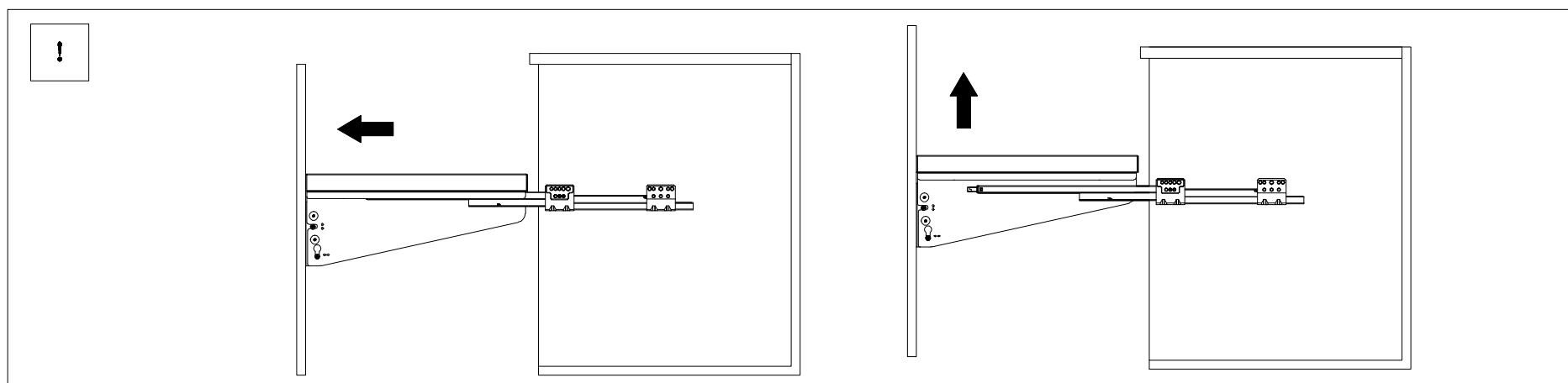


Notice: steel pad in the dotted box only for 16mm panel, 18mm panel doesn't need.

Dimension of dustbin	H
Low Dustbin (330mm)	Min.400
HIGH Dustbin (330mm)	Min.530



Dismantlement of Dustbin Drawer:



Notice:

- 1.Does the runner not move steadily and pulse? Please ensure against wood chips or other scrap fall into the runner interior during installation.
- 2.Does the runner not work smoothly? Please check whether the bottom and back panel measurement is up to the mustard or not; bottom panel and cabinet is regularity or not; and runners are vertical and horizontal or not.
- 3.Is the drawer shaking? Please check whether the side panel is completely fit with runners or not and runners are vertical and horizontal or not, using installed kidney-shaped hole to adjust.
- 4.Does the panel can not close completely or is the soft-closing distance too short? Please check whether the side panel is completely fit with runners or not, and check the distance between runners and cabinet side panel front side is correct or not.
- 5.Is the drawer damaged during the transportation? Please ensure do not put the installed drawer and cabinet upside down, otherwise, the drawer will be damaged.