



DOMUS Line®

# POLAR COLLECTION





DOMUS Line is an Italian company specialized in the designing and production of lighting devices for the furniture industry.

Six brands put together the widest offer of lighting systems and control devices of the furniture lighting sector.

Ongoing research, innovation, design, reliability and brand reputation are the distinctive values of our company.

## About us



Luminaires for kitchens, living rooms and bedrooms



Architectural luminaires for bathrooms



Luminaires for classic furniture



Commercial lighting



Sensors and LED converters

## Quality, environment and safety



The international standard ISO 9001 outlines the way to achieve high performance by following processes that improve operational efficiency at all levels. ISO 9001 is the most popular standard in the world, because it ensures the quality of processes, providing organizations with a competitive advantage. DOMUS Line has been ISO9001 certified for many years and has entrusted an entity among the most prestigious in the world to carry out periodic checks.



The international standard ISO 14001 is a management system recognized around the world that provides a framework for managing environmental performance. This standard is designed to help companies maintain high business value and, at the same time, effectively manage environmental responsibility. The recent certification of DOMUS Line ensures the company's commitment to continuous improvement and respect for the environment.



The ETL brand (Electrical Testing Laboratories) indicates that the product has been tested in accordance with the applicable product standards (ANSI, UL, CSA, ASTM, NFPA) so as to be sold in North America. DOMUS Line offers a wide range of products certified according to this standard, and then traded in compliance with the law in USA and Canada.



## POLAR

DOMUS Line  
design

### Under cabinet luminaire for accent lighting

#### Materials

aluminium

#### Finishes:

aluminium

#### Light source:

SMD LED module

#### Connector:

Micro24

#### Wiring:

2000mm

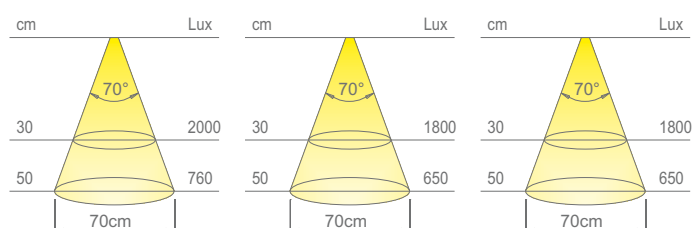
#### Application type:

under cabinet, under shelf

#### Installation:

surface

	NW	WW	SWW
<b>Colour appearance</b>	natural white	warm white	super warm white
<b>Colour temperature</b>	4000 K	3100 K	2700 K
<b>Luminous flux</b>	400 lm	375 lm	375 lm
<b>Luminous efficiency</b>	80 lm/W	75 lm/W	75 lm/W
<b>CRI</b>	Ra ≥ 80	Ra ≥ 80	Ra ≥ 80

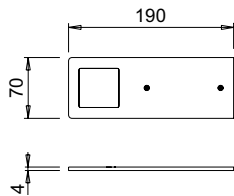


### DESCRIPTION

POLAR is made entirely from aluminium, with a thickness of only 4mm. The high light intensity is guaranteed by a cluster of 24 highly performing LEDs for 5W of total power. POLAR is designed for fast surface installation through a wall fixing mechanism that requires only two screws. This allows you to hide the power cable directly on the back of the cabinet without the need to design preventive and complex holes in the cabinet. Its features make it ideal for using under kitchen cabinets or under shelves. It is powered by 24Vdc, and can be connected to all DOMUS Line switching systems.



DOMUS Line®



### POLAR

without switch



Code	Model	Watt & Volt	Light colour	Finish
1227505N	single	5W @ 24Vdc	natural white	aluminium
1227505B	single	5W @ 24Vdc	warm white	aluminium
1227505B1	single	5W @24Vdc	super warm white	aluminium

LED CONVERTER NOT INCLUDED. TO BE ORDERED SEPARATELY.



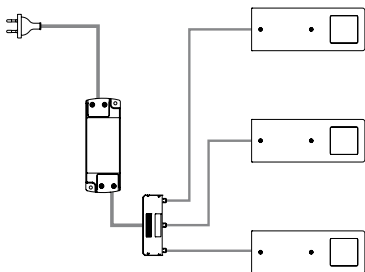
### SET POLAR 3X

without switch



Code	Model	Watt & Volt	Light colour	Finish
2226305N	set 3X	3x5W @ 230Vac	natural white	aluminium
2226305B	set 3X	3x5W @ 230Vac	warm white	aluminium
2226305B1	set 3X	3x5W @ 230Vac	super warm white	aluminium

LED CONVERTER INCLUDED.



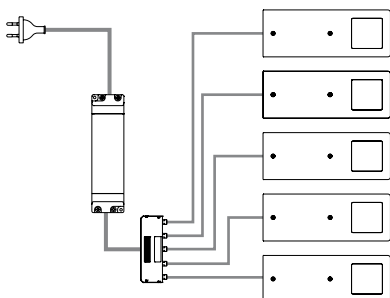
### SET POLAR 5X

without switch



Code	Model	Watt & Volt	Light colour	Finish
2226405N	set 5X	5x5W @ 230Vac	natural white	aluminium
2226405B	set 5X	5x5W @ 230Vac	warm white	aluminium
2226405B1	set 5X	5x5W @ 230Vac	super warm white	aluminium

LED CONVERTER INCLUDED.



Device with non-replaceable LED module  
Energy efficiency class: A++, A+, A  
EU Regulation No. 874/2012



## POLAR R1

DOMUS Line  
design

### Under cabinet luminaire for accent lighting

#### Materials

aluminium

#### Finishes:

aluminium

#### Light source:

SMD LED module

#### Connector:

Micro24

#### Wiring:

2000mm

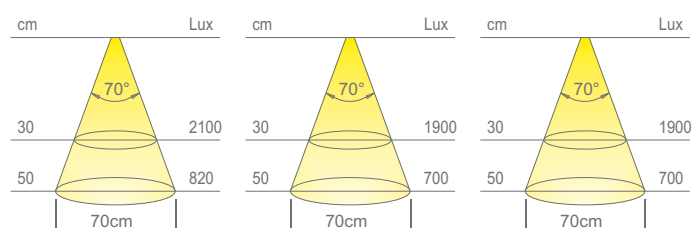
#### Application type:

under cabinet, under shelf

#### Installation:

surface

	NW	WW	SWW
<b>Colour appearance</b>	natural white	warm white	super warm white
<b>Colour temperature</b>	4000 K	3100 K	2700 K
<b>Luminous flux</b>	400 lm	375 lm	375 lm
<b>Luminous efficiency</b>	80 lm/W	75 lm/W	75 lm/W
<b>CRI</b>	Ra ≥ 80	Ra ≥ 80	Ra ≥ 80



## DESCRIPTION

POLAR R1 is made entirely from aluminium, with a thickness of only 4mm. The high light intensity is guaranteed by a cluster of 24 highly performing LEDs for 5W of total power.

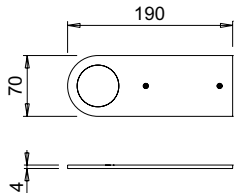
POLAR R1 is designed for fast surface installation through a wall fixing mechanism that requires only two screws. This allows you to hide the power cable directly on the back of the cabinet without the need to design preventive and complex holes in the cabinet. Its features make it ideal for using under kitchen cabinets or under shelves.

It is powered by 24Vdc, and can be connected to all DOMUS Line switching systems.





DOMUS Line®



### POLAR R1

without switch



Code	Model	Watt & Volt	Light colour	Finish
1245005N	single	5W @ 24Vdc	natural white	aluminium
1245005B	single	5W @ 24Vdc	warm white	aluminium
1245005B1	single	5W @ 24Vdc	super warm white	aluminium

LED CONVERTER NOT INCLUDED. TO BE ORDERED SEPARATELY.



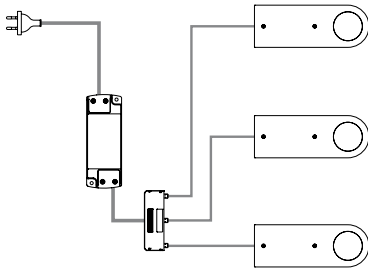
### SET POLAR R1 3X

without switch



Code	Model	Watt & Volt	Light colour	Finish
2233605N	set 3X	3x5W @ 230Vac	natural white	aluminium
2233605B	set 3X	3x5W @ 230Vac	warm white	aluminium
2233605B1	set 3X	3x5W @ 230Vac	super warm white	aluminium

LED CONVERTER INCLUDED.



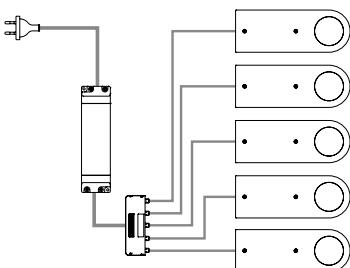
### SET POLAR R1 5X

without switch



Code	Model	Watt & Volt	Light colour	Finish
2233705N	set 5X	5x5W @ 230Vac	natural white	aluminium
2233705B	set 5X	5x5W @ 230Vac	warm white	aluminium
2233705B1	set 5X	5x5W @ 230Vac	super warm white	aluminium

LED CONVERTER INCLUDED.



Device with non-replaceable LED module  
Energy efficiency class: A++, A+, A  
EU Regulation No. 874/2012



## POLAR XS

DOMUS Line  
design

**Under cabinet spotlight  
for accent lighting**

**Materials**

aluminium

**Finishes:**

aluminium

**Light source:**

SMD LED module

**Connector:**

Micro24

**Wiring:**

2000mm

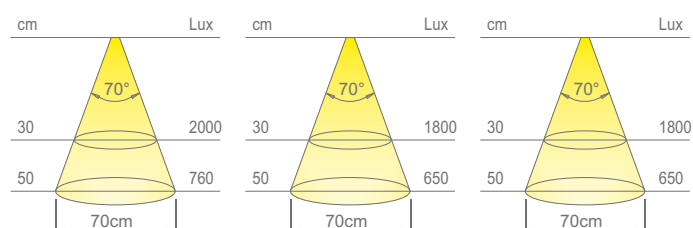
**Application type:**

under cabinet, under shelf

**Installation:**

surface

	NW	WW	SWW
<b>Colour appearance</b>	natural white	warm white	super warm white
<b>Colour temperature</b>	4000 K	3100 K	2700 K
<b>Luminous flux</b>	400 lm	375 lm	375 lm
<b>Luminous efficiency</b>	80 lm/W	75 lm/W	75 lm/W
<b>CRI</b>	Ra ≥ 80	Ra ≥ 80	Ra ≥ 80



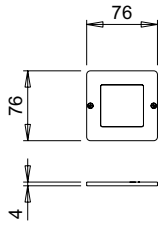
### DESCRIPTION

POLAR XS is made entirely from aluminium with a thickness of only 4mm. The high light intensity is guaranteed by a cluster of 24 highly performing LEDs for 5W of total power.

POLAR XS is designed for a fast surface installation with just two screws.

Ideal for using under kitchen cabinets or under shelves, it is powered by 24Vdc and can then be connected to all the switching systems of DOMUS Line.





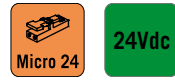
**POLAR XS**

without switch



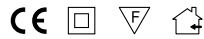
Code	Model	Watt & Volt	Light colour	Finish
1249105N	single	5W @ 24Vdc	natural white	aluminium
1249105B	single	5W @ 24Vdc	warm white	aluminium
1249105B1	single	5W @ 24Vdc	super warm white	aluminium

**LED CONVERTER NOT INCLUDED. TO BE ORDERED SEPARATELY.**



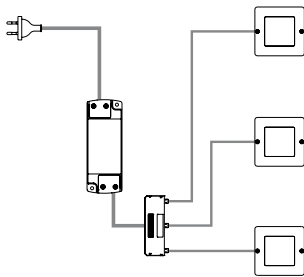
**SET POLAR XS 3X**

without switch



Code	Model	Watt & Volt	Light colour	Finish
2233805N	set 3X	3x5W @ 230Vac	natural white	aluminium
2233805B	set 3X	3x5W @ 230Vac	warm white	aluminium
2233805B1	set 3X	3x5W @ 230Vac	super warm white	aluminium

**LED CONVERTER INCLUDED.**



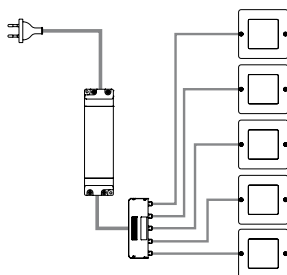
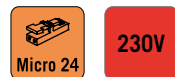
**SET POLAR XS 5X**

without switch



Code	Model	Watt & Volt	Light colour	Finish
2233905N	set 5X	5x5W @ 230Vac	natural white	aluminium
2233905B	set 5X	5x5W @ 230Vac	warm white	aluminium
2233905B1	set 5X	5x5W @ 230Vac	super warm white	aluminium

**LED CONVERTER INCLUDED.**



Device with non-replaceable LED module  
Energy efficiency class: A++, A+, A  
EU Regulation No. 874/2012



## POLAR XL

design  
DOMUS Line

**Under cabinet luminaire  
for accent lighting**

**Materials:**

aluminium

**Finishes:**

aluminium

**Sorgente luminosa:**

SMD LED module

**Connector:**

Micro24

**Wiring:**

2000mm

**Application type:**

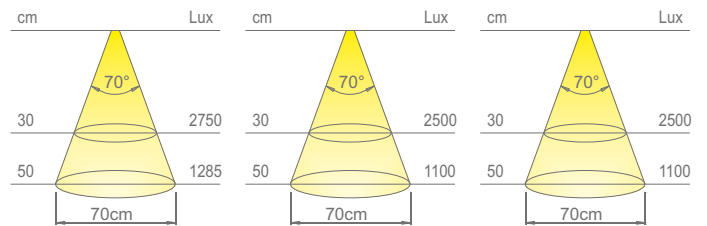
under cabinet, under shelf

**Installation:**

surface

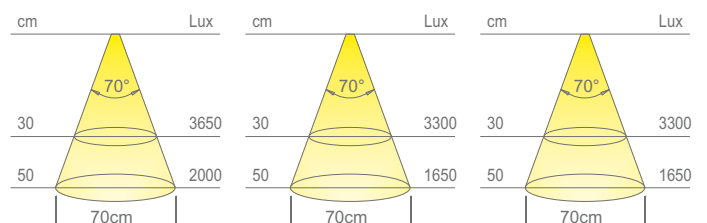
### POLAR XL2

	NW	WW	SWW
<b>Colour appearance</b>	natural white	warm white	super warm white
<b>Colour temperature</b>	4000 K	3100 K	2700 K
<b>Luminous flux</b>	800 lm	750 lm	750 lm
<b>Luminous efficiency</b>	80 lm/W	75 lm/W	75 lm/W
<b>CRI</b>	Ra ≥ 80	Ra ≥ 80	Ra ≥ 80

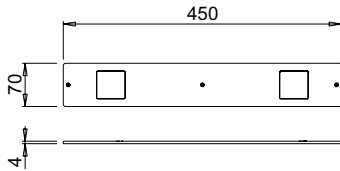


### POLAR XL3

	NW	WW	SWW
<b>Colour appearance</b>	natural white	warm white	super warm white
<b>Colour temperature</b>	4000 K	3100 K	2700 K
<b>Luminous flux</b>	1200 lm	1125 lm	1125 lm
<b>Luminous efficiency</b>	80 lm/W	75 lm/W	75 lm/W
<b>CRI</b>	Ra ≥ 80	Ra ≥ 80	Ra ≥ 80



Device with non-replaceable LED module  
Energy efficiency class: A++, A+, A  
EU Regulation No. 874/2012



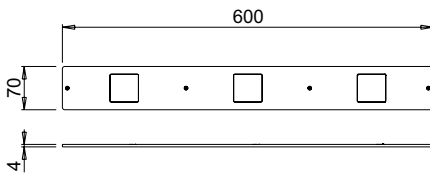
### POLAR XL2

without switch



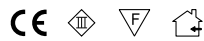
Code	Length	Watt & Volt	Light colour	Finish
1245205N	450mm	10W @ 24Vdc	natural white	aluminium
1245205B	450mm	10W @ 24Vdc	warm white	aluminium
1245205B1	450mm	10W @ 24Vdc	super warm white	aluminium

LED CONVERTER NOT INCLUDED. TO BE ORDERED SEPARATELY.



### POLAR XL3

without switch



Code	Length	Watt & Volt	Light colour	Finish
1245305N	600mm	15W @ 24Vdc	natural white	aluminium
1245305B	600mm	15W @ 24Vdc	warm white	aluminium
1245305B1	600mm	15W @ 24Vdc	super warm white	aluminium

LED CONVERTER NOT INCLUDED. TO BE ORDERED SEPARATELY.



### DESCRIPTION

POLAR XL is made entirely from aluminium with a thickness of only 4mm. The high light intensity is guaranteed by two or three clusters of 24 highly performing LEDs. POLAR XL2 and POLAR XL3 are designed for a fast surface installation under cabinet or under shelf with fixing screws. POLAR XL is powered by 24Vdc and can then be connected to all the switching systems of DOMUS Line.



### CALL ME FW 2.0

wireless dimmable switch

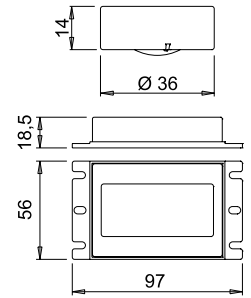


Code	Input	Output	Load	Finish
1750801	12 - 24Vdc	12 - 24Vdc	36 - 72W	white
1750810	12 - 24Vdc	12 - 24Vdc	36 - 72W	aluminium
1750819	12 - 24Vdc	12 - 24Vdc	36 - 72W	steel



#### How CALL ME FW works

Switching on and switching off take place simply by pressing the remote control key of CALL ME FW. With an extended touch, it is possible to adjust the light intensity (dimmer function). A short flash of the device connected to CALL ME FW indicates having reached the maximum light. The light level will be stored until the next adjustment (level memory).



On request, two holders for recessed installation on wood panels are available.  
 2011601 white  
 2011610 aluminium  
 2011619 steel



white



aluminium



steel



### TOUCH ME FW 2.0

TouchLed dimmable switch

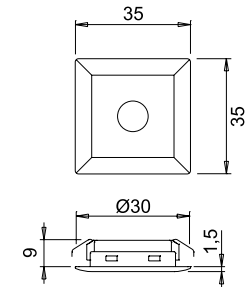


Code	Input	Output	Load	Finish
1750701	12 - 24Vdc	12 - 24Vdc	30 - 60W	white
1750710	12 - 24Vdc	12 - 24Vdc	30 - 60W	aluminium



#### How TOUCH ME FW works

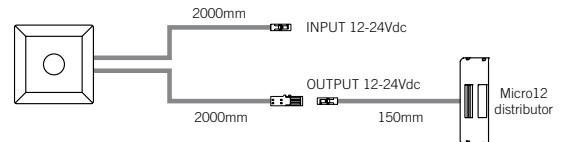
The switching on and switching off of the devices connected to TOUCH ME FW takes place simply with a quick touch of the LED. With an extended touch it is possible to adjust the light intensity (dimmer function). A short flash of the device connected to TOUCH ME FW indicates having reached the maximum light. The light level will be stored until the next adjustment (level memory). TOUCH ME FW also integrates the "night-light" function which is activated only when the devices are switched off.



white



aluminium



### DOT FW 2.0

touch dimmable switch

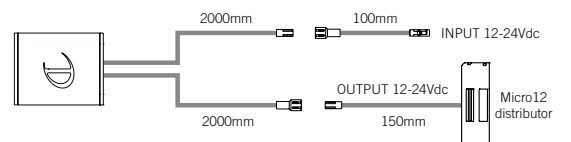
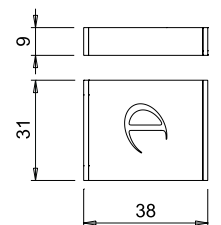


Code	Input	Output	Load	Finish
1750905	12 - 24Vdc	12 - 24Vdc	30 - 60W	aluminium



#### How DOT FW works

Switching on and switching off of the devices connected to DOT takes place simply with a quick touch. With an extended touch it is possible to adjust the light intensity (dimmer function).





wood



glass

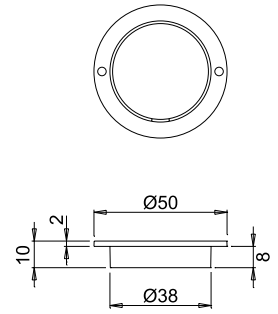
plexiglass

### CAPSENS FW 2.0

touch dimmable switch

CE IP44

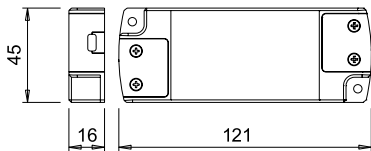
Code	Input	Output	Load	Finish
1750603	12 - 24Vdc	12 - 24Vdc	36 - 72W	nero



#### How CAPSENS FW works

Switching on and switching off takes place simply through hand contact with the surface beneath which has been applied CAPSENS FW. With an extended touch it is possible to adjust the light intensity (dimmer function). A brief flash with the device connected to CAPSENS FW indicates of having reached the maximum light. The light level will be stored until the next adjustment (level memory).

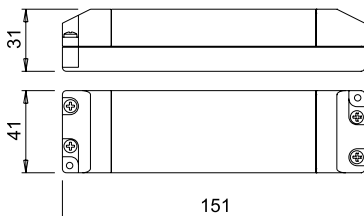
Materials	max H
wood	30mm
plexiglass	20mm
glass	12mm



### FLAT 15/24D

CE SELV

Code	0846701
Input	220 - 240Vac
Output	24Vdc
Power	1 - 15W
Input wiring	2000mm with europlug
Output wiring	500mm with Micro24 distributor 9 connectors



### SL30/24D

CE SELV

Code	0846501
Input	220 - 240Vac
Output	24Vdc
Power	3 - 30W
Input wiring	2000mm with europlug
Output wiring	500mm with Micro24 distributor 9 connectors



#### **Warranty**

Each unit is fully guaranteed for a period of 24 months from the date of delivery. From the warranty are excluded all defects caused by force majeure (lightning, fire, etc..), as well as any damage caused by improper use of equipment. The products must be installed and/or used in accordance with the specifications and instructions given by DOMUS Line Srl. They must also be installed and/or used in compliance with the provisions governing the installation and/or use of electric material force in the country where the products are installed and/or used. To this end, the buyer expressly releases DOMUS Line Srl from any responsibility for improper use, failure to comply with safety standards, technical specifications and instructions for use. The products which do not meet the standards and/or specifications in force in the European Union, will only be provided to the buyer that in the order specifies that the destination country does not belong to the European Union and indicating to have exhausted all the controls on compatibility of safety standards in force in the country outside the EU for which they are intended. In the absence of other arrangements for testing of the equipment, the standards established by the CEI (Italian Electrotechnical Committee) are valid. The warranty is void without fail in the event of tampering with the equipment by persons or technicians not specifically authorized by DOMUS Line Srl. The warranty does not cover normal wear and tear or the consequences of improper installation, nor the failure and/or breaks caused by inexperience and/or neglect.

#### **Copyright**

© 2016 DOMUS Line®

The brand and name DOMUS Line are registered trademarks. DOMUS Line owns brand names and known and widely used logos. The brand names and logos published in this catalogue are registered or in any case subject to the laws on unregistered brand names. All reproduction or distribution by any means: photocopies, internet, microfilm or other means, total or partial, of this catalogue is forbidden without the written permission of DOMUS Line.

#### **Patents**

The patented models, registered and published in this catalogue, are protected and counterfeiting will be prosecuted in accordance with the law.

#### **Disclaimer**

This document is distributed as “uncontrolled” and DOMUS Line reserves the right to change the characteristics of the products to meet any technical or commercial needs, without prior notice. DOMUS Line verified the data published in this document with the utmost attention. However, because of the variables that exist between the development process and the publication of the catalogue, DOMUS Line assumes no responsibility for errors, gaps in data, inaccuracies, and so on.





DOMUS Line®

DOMUS Line srl

Via Maestri del Lavoro, 1 I-33080 Porcia (PN) Italy

P. +39 0434 595911 F. +39 0434 923345

[info@domusline.com](mailto:info@domusline.com)

[www.domusline.com](http://www.domusline.com)





## POLAR XR

DOMUS Line design

**Under cabinet luminaire for accent lighting**

**Materials:**

aluminium

**Finishes:**

aluminium

**Light source:**

SMD LED module

**Connector:**

Micro24

**Wiring:**

2000mm

**Application type:**

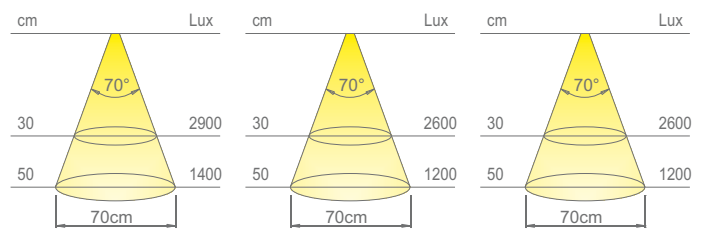
under cabinet

**Installation:**

surface

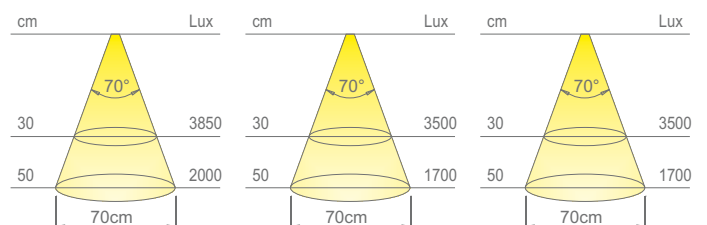
### POLAR XR2

	NW	WW	SWW
<b>Colour appearance</b>	natural white	warm white	super warm white
<b>Colour temperature</b>	4000 K	3100 K	2700 K
<b>Luminous flux</b>	800 lm	750 lm	750 lm
<b>Luminous efficiency</b>	80 lm/W	75 lm/W	75 lm/W
<b>CRI</b>	Ra ≥ 80	Ra ≥ 80	Ra ≥ 80

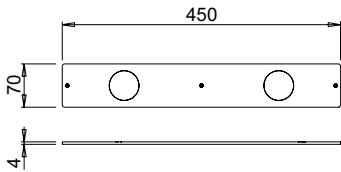


### POLAR XR3

	NW	WW	SWW
<b>Colour appearance</b>	natural white	warm white	super warm white
<b>Colour temperature</b>	4000 K	3100 K	2700 K
<b>Luminous flux</b>	1200 lm	1125 lm	1125 lm
<b>Luminous efficiency</b>	80 lm/W	75 lm/W	75 lm/W
<b>CRI</b>	Ra ≥ 80	Ra ≥ 80	Ra ≥ 80



Device with non-replaceable LED module  
 Energy efficiency class: A++, A+, A  
 EU Regulation No. 874/2012



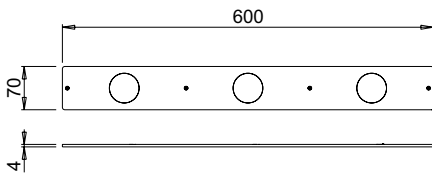
**POLAR XR2**

without switch



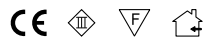
Code	Length	Watt & Volt	Light colour	Finish
1248905N	450mm	10W @ 24Vdc	natural white	aluminium
1248905B	450mm	10W @ 24Vdc	warm white	aluminium
1248905B1	450mm	10W @ 24Vdc	super warm white	aluminium

**LED CONVERTER NOT INCLUDED. TO BE ORDERED SEPARATELY.**



**POLAR XR3**

without switch



Code	Length	Watt & Volt	Light colour	Finish
1249005N	600mm	15W @ 24Vdc	natural white	aluminium
1249005B	600mm	15W @ 24Vdc	warm white	aluminium
1249005B1	600mm	15W @ 24Vdc	super warm white	aluminium

**LED CONVERTER NOT INCLUDED. TO BE ORDERED SEPARATELY.**



**DESCRIPTION**

POLAR XR is made entirely from aluminium with a thickness of only 4mm. The high light intensity is guaranteed by two or three clusters of 24 highly performing LEDs. POLAR XR2 and POLAR XR3 are designed for a fast surface installation under cabinet or under shelf with fixing screws. POLAR XR is powered by 24Vdc and can then be connected to all the switching systems of DOMUS Line.