



DOMUS Line®

TITAN

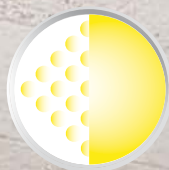


EDGE LED LUMINAIRE WITH WIDE BEAM ANGLE

TITAN is an LED panel for surface installation with a thickness of only 6mm. The device integrates the special EDGE LED technology that guarantees a very wide beam angle which allows for homogenous light on the surface of the worktop. TITAN is also a luminaire with a high color rendering index ($Ra \geq 90$).



NO-DOT EFFECT LED TECHNOLOGY



The device has a homogeneous and diffused light projection which is devoid of the speckled effect typical of traditional LED spotlights. TITAN also integrates a special optic, which appears neutral and uniform even when the appliance is off.

FEATURES

Description	LED luminaire with wide projection
Design	DOMUS Line
Materials	aluminium and stainless steel
Finishes	steel
Light source	SMD EDGE LED
Application type	under cabinet or under shelf
Installation	on surface

Device with non-replaceable LED module
Energy efficiency class: A++, A+, A
EU Regulation No. 874/2012

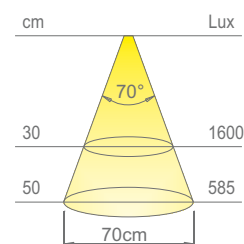
TECHNICAL DATA

Power supply	12Vdc
Wattage	6W
Wiring	2000mm
Connector	Micro12

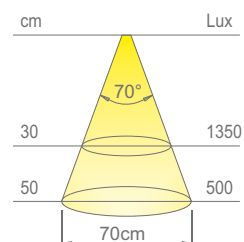


PHOTOMETRIC DATA

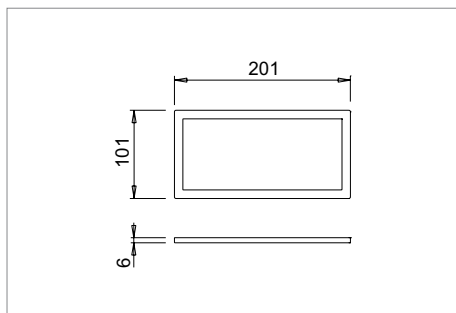
Colour appearance	natural white
Colour temperature	4000 Kelvin
Luminous flux	270 lm
Luminous efficiency	45 lm/W
CRI	Ra ≥90



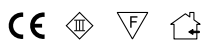
Colour appearance	warm white
Colour temperature	3000 Kelvin
Luminous flux	240 lm
Luminous efficiency	40 lm/W
CRI	Ra ≥90



CODES AND DRAWINGS

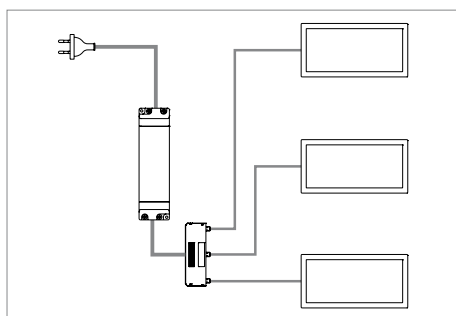


TITAN

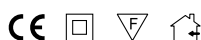


Code	Watt @ Volt	Colour temperature	Finish
1248516N	6W @ 12Vdc	natural white	steel
1248516B	6W @ 12Vdc	warm white	steel

LED CONVERTER NOT INCLUDED. TO BE ORDERED SEPARATELY.

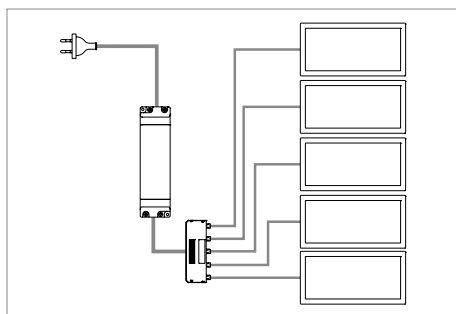


SET TITAN 3X - without switch

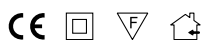


Code	Model	Watt @ Volt	Colour temperature	Finish
2240016N	set 3X without switch	18W @ 230Vac	natural white	steel
2240016B	set 3X without switch	18W @ 230Vac	warm white	steel

LED CONVERTER INCLUDED.

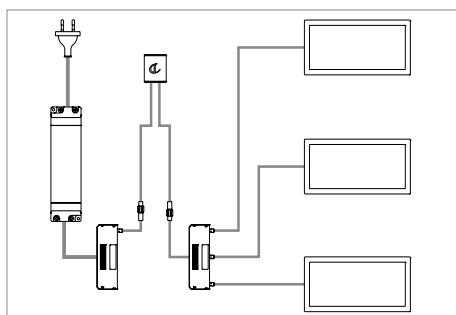


SET TITAN 5X - without switch



Code	Model	Watt @ Volt	Colour temperature	Finish
2240116N	set 5X without switch	30W @ 230Vac	natural white	steel
2240116B	set 5X without switch	30W @ 230Vac	warm white	steel

LED CONVERTER INCLUDED.

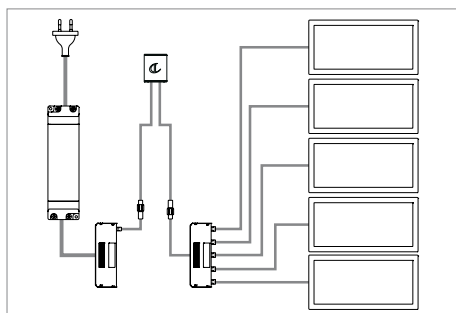


SET TITAN 3X - with switch



Code	Model	Watt @ Volt	Colour temperature	Finish
2236816N	set 3X with switch	18W @ 230Vac	natural white	steel
2236816B	set 3X with switch	18W @ 230Vac	warm white	steel

LED CONVERTER INCLUDED. SUPPLIED WITH DOT TOUCH DIMMABLE SWITCH.



SET TITAN 5X - with switch



Code	Model	Watt @ Volt	Colour temperature	Finish
2236916N	set 5X with switch	30W @ 230Vac	natural white	steel
2236916B	set 5X with switch	30W @ 230Vac	warm white	steel

LED CONVERTER INCLUDED. SUPPLIED WITH DOT TOUCH DIMMABLE SWITCH.



SWITCHES AND LED CONVERTERS

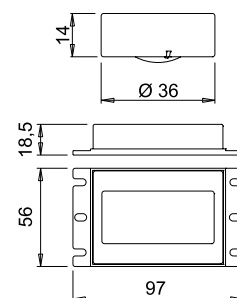


CALL ME FW 2.0

wireless dimmable switch



Code	Input	Output	Load	Finish
1750801	12 - 24Vdc	12 - 24Vdc	36 - 72W	white
1750810	12 - 24Vdc	12 - 24Vdc	36 - 72W	aluminium
1750819	12 - 24Vdc	12 - 24Vdc	36 - 72W	steel



On request, two holders for recessed installation on wood panels are available.
 2011601 white
 2011610 aluminium
 2011619 steel

How CALL ME FW 2.0 works

The switching on and switching off take place simply by pressing the remote control key of CALL ME FW 2.0. With an extended touch, it is possible to adjust the light intensity (dimmer function). A short flash of the device connected to CALL ME FW 2.0 indicates having reached the maximum light. The light level will be stored until the next adjustment (level memory).

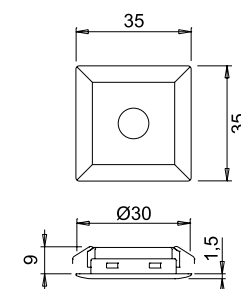


TOUCH ME FW 2.0

dimmable TouchLed switch

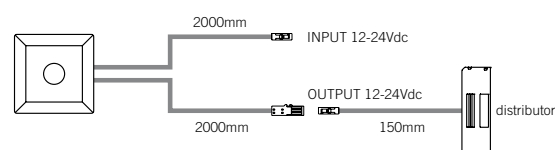
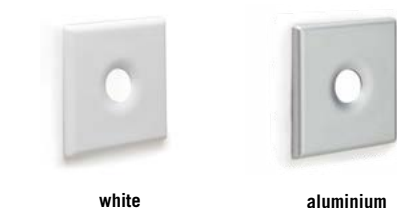


Code	Input	Output	Load	Finish
1750701	12 - 24Vdc	12 - 24Vdc	30 - 60W	white
1750710	12 - 24Vdc	12 - 24Vdc	30 - 60W	aluminium



How TOUCH ME FW 2.0 works

The switching on and switching off of the devices connected to TOUCH ME FW 2.0 takes place simply with a quick touch of the LED. With an extended touch it is possible to adjust the light intensity (dimmer function). A short flash of the device connected to TOUCH ME FW 2.0 indicates having reached the maximum light. The light level will be stored until the next adjustment (level memory). TOUCH ME FW 2.0 also integrates the "night-light" function which is activated only when the devices are switched off.

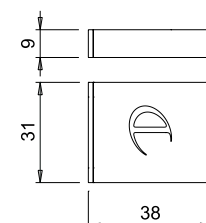


DOT FW 2.0

touch dimmable switch

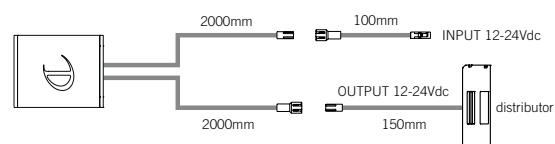


Code	Input	Output	Load	Finish
1750905	12 - 24Vdc	12 - 24Vdc	36 - 72W	aluminium



How DOT FW 2.0 works

The switching on and switching off of the devices connected to DOT FW 2.0 takes place simply with a quick touch. With an extended touch it is possible to adjust the light intensity (dimmer function).

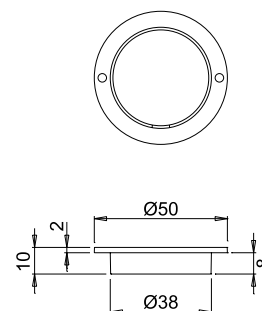


**CAPSENS FW 2.0**

touch dimmable switch

CE  IP44

Code	Input	Output	Load	Finish
1750603	12 - 24Vdc	12 - 24Vdc	30 - 60W	black

**How CAPSENS FW 2.0 works**

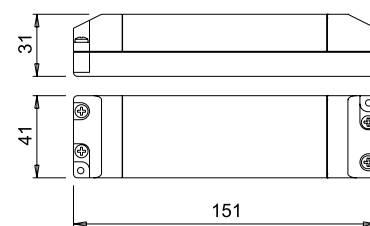
The switching on and switching off takes place simply through hand contact with the surface beneath which has been applied CAPSENS FW 2.0. With an extended touch it is possible to adjust the light intensity (dimmer function). A brief flash of the device connected to CAPSENS FW 2.0 indicates of having reached the maximum light. The light level will be stored until the next adjustment (level memory).

Materials	max H
wood	30mm
plexiglass	20mm
glass	12mm

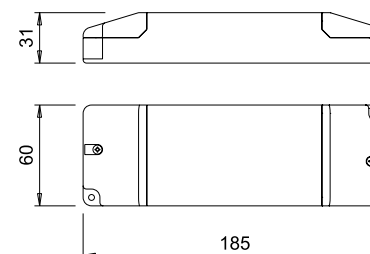
The data are indicative and the sensitivity of CAPSENS FW 2.0 may increase or decrease in relation to the composition of the materials. CAPSENS FW 2.0 cannot be installed on metal surfaces. For other materials (such as, for example, granite, marble and composite materials), it is recommended to carry out a preliminary test. The "activation" area is about 50 mm diameter.

**SL30/12R**CE    

Code	0852601
Input	220 - 240Vac
Output	12Vdc
Load	3 - 30W
Input wiring	2000mm with Europlug
Output wiring	500mm with Micro12 distributor 9 slots

**SL60/12R**CE    

Code	0851701
Input	220 - 240Vac
Output	12Vdc
Load	2 - 60W
Input wiring	2000mm with Europlug
Output wiring	500mm with Micro12 distributor 10 slots



Warranty

Each unit is fully guaranteed for a period of 24 months from the date of delivery. From the warranty are excluded all defects caused by force majeure (lightning, fire, etc..), as well as any damage caused by improper use of equipment. The products must be installed and/or used in accordance with the specifications and instructions given by DOMUS Line Srl. They must also be installed and/or used in compliance with the provisions governing the installation and/or use of electric material force in the country where the products are installed and/or used. To this end, the buyer expressly releases DOMUS Line Srl from any responsibility for improper use, failure to comply with safety standards, technical specifications and instructions for use. The products which do not meet the standards and/or specifications in force in the European Union, will only be provided to the buyer that in the order specifies that the destination country does not belong to the European Union and indicating to have exhausted all the controls on compatibility of safety standards in force in the country outside the EU for which they are intended. In the absence of other arrangements for testing of the equipment, the standards established by the CEI (Italian Electrotechnical Committee) are valid. The warranty is void without fail in the event of tampering with the equipment by persons or technicians not specifically authorized by DOMUS Line Srl. The warranty does not cover normal wear and tear or the consequences of improper installation, nor the failure and/or breaks caused by inexperience and/or neglect.

Copyright

© 2016 DOMUS Line®

The brand and name DOMUS Line are registered trademarks. DOMUS Line owns brand names and known and widely used logos. The brand names and logos published in this catalogue are registered or in any case subject to the laws on unregistered brand names. All reproduction or distribution by any means: photocopies, internet, microfilm or other means, total or partial, of this catalogue is forbidden without the written permission of DOMUS Line.

Patents

The patented models, registered and published in this catalogue, are protected and counterfeiting will be prosecuted in accordance with the law.

Disclaimer

This document is distributed as “uncontrolled” and DOMUS Line reserves the right to change the characteristics of the products to meet any technical or commercial needs, without prior notice. DOMUS Line verified the data published in this document with the utmost attention. However, because of the variables that exist between the development process and the publication of the catalogue, DOMUS Line assumes no responsibility for errors, gaps in data, inaccuracies, and so on.



DOMUS Line®

DOMUS Line srl

Via Maestri del Lavoro, 1 I-33080 Porcia (PN) Italy

P. +39 0434 595911 F. +39 0434 923345

info@domusline.com

www.domusline.com