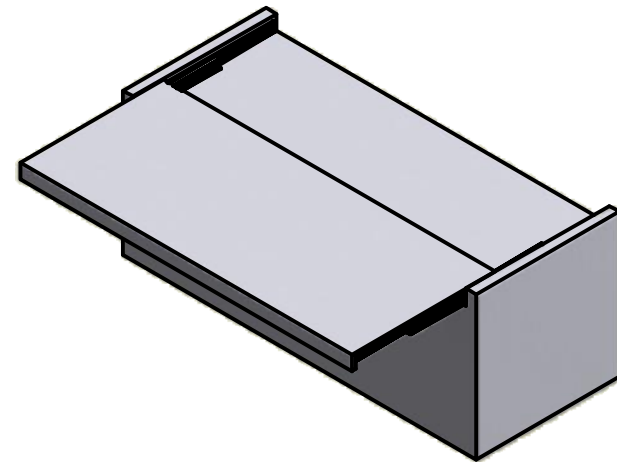


SNACK

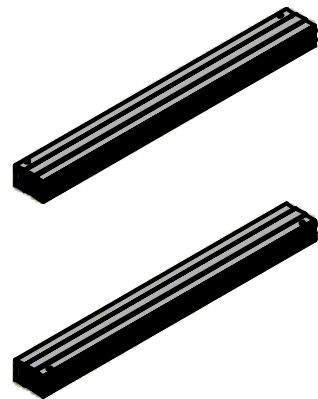
ISTRUZIONI DI MONTAGGIO ASSEMBLY INSTRUCTIONS

MODELLI
MODELS:

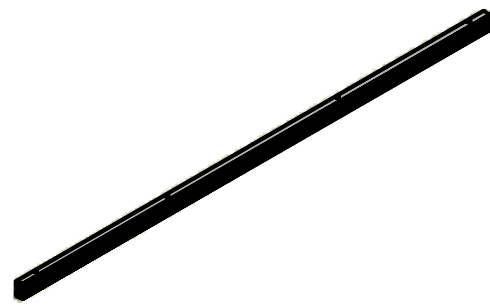
411/78.1281.22 SNACK 2467 mm
411/78.1282.22 SNACK 1867 mm



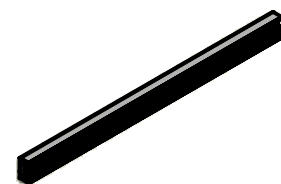
CONTENUTO DELLA CONFEZIONE INCLUDED IN THE PACKAGING



GUIDE
SLIDES



TRAVERSO (X2)
CONNECTION BAR

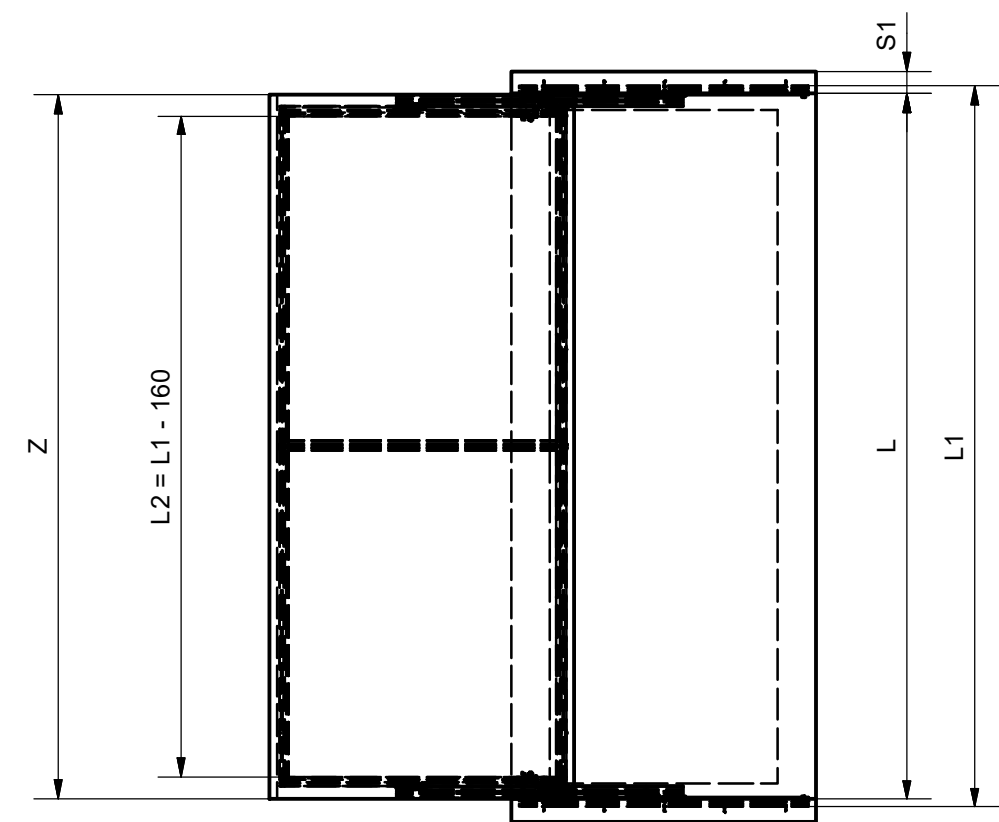
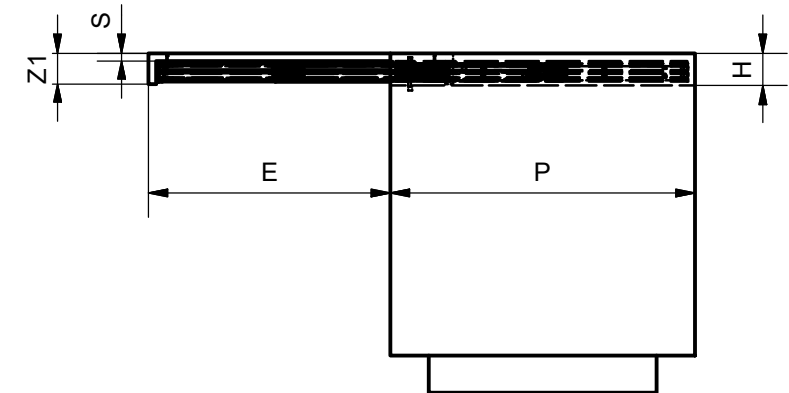


TRAVERSO
CONNECTION BAR

SACCHETTO ACCESSORI - ACCESSORIES

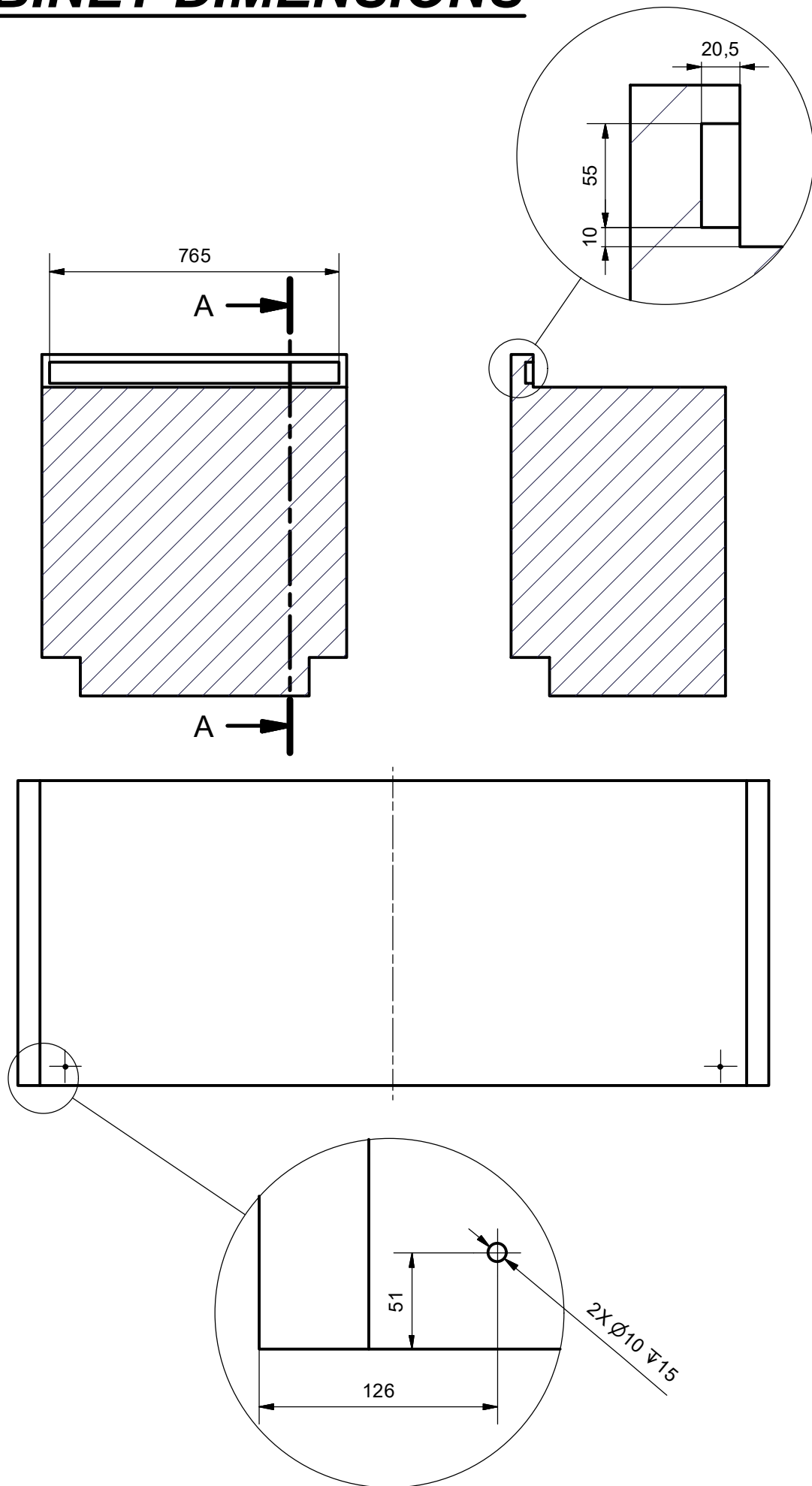
- A. Vite autofilettante TC 3.5x9.5 - 3.5x9.5 Tapping screw TC (x 8)
- B. Vite truciolare 3.5x16 - 3.5x16 chipboard screw (x 10)
- C. Vite TPS M6x40 trilobata - M6x40 FHCS screw (x 12)
- D. Blocco - Block (x 2)

DIMENSIONI GENERALI GENERAL SIZES

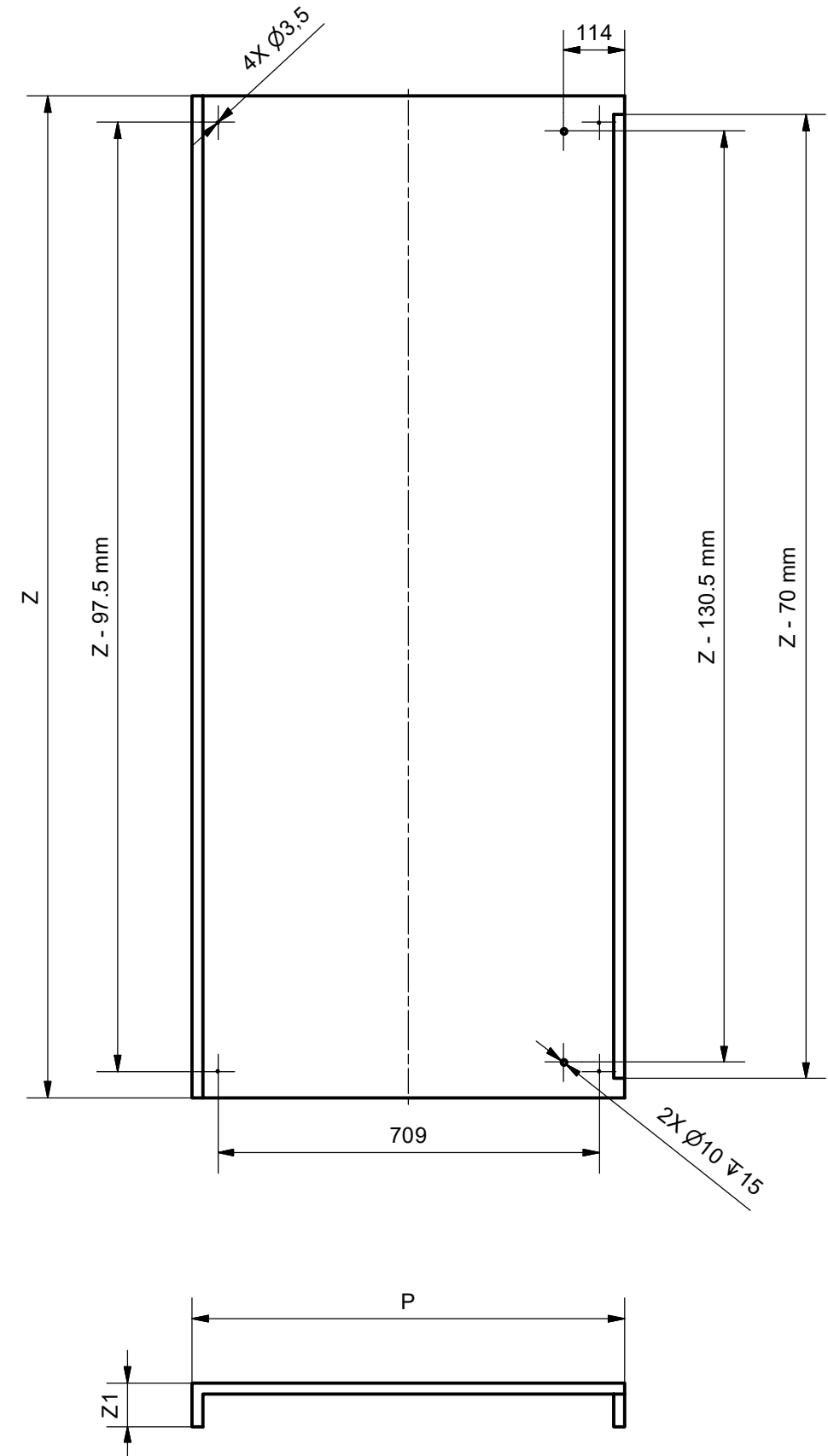


DIMENSIONE - DIMENSION	SIMBOLO - SYMBOL	mm
ALTEZZA - HEIGHT	H	MIN: 83
PROFONDITA' - DEPTH	P	MIN: 800
LARGHEZZA - WIDTH	L	MIN: 1867 MAX: 2467
SPESSORE PIANO - TOP THICKNESS	S	MIN: 18
SPESSORE SPALLE - SIDE THICKNESS	S1	MIN: 40
LARGHEZZA PIANO - TOP WIDTH	Z	L - 5
ALTEZZA FRONTE - FRONT HEIGHT	Z1	H+S-5
APERTURA PIANO - TOP OPENING	E	640

DIMENSIONI MODULO CABINET DIMENSIONS



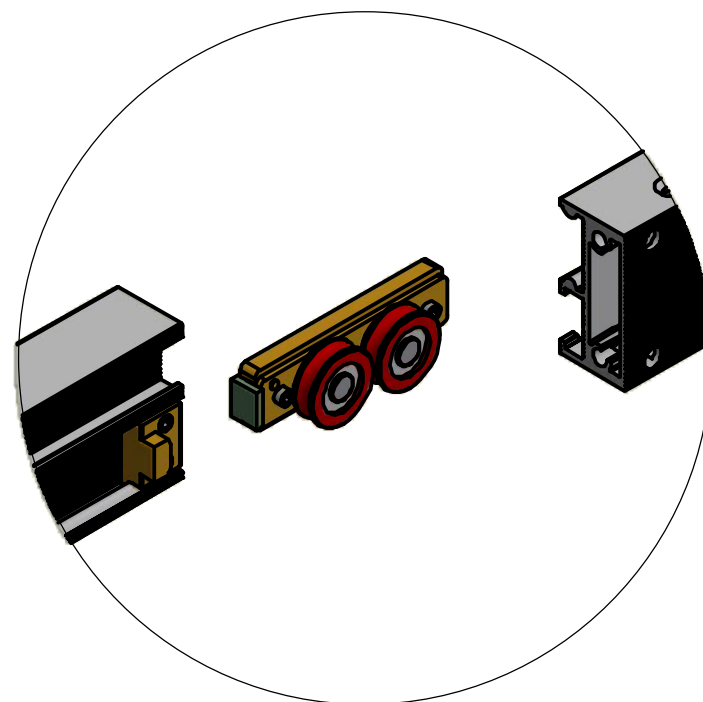
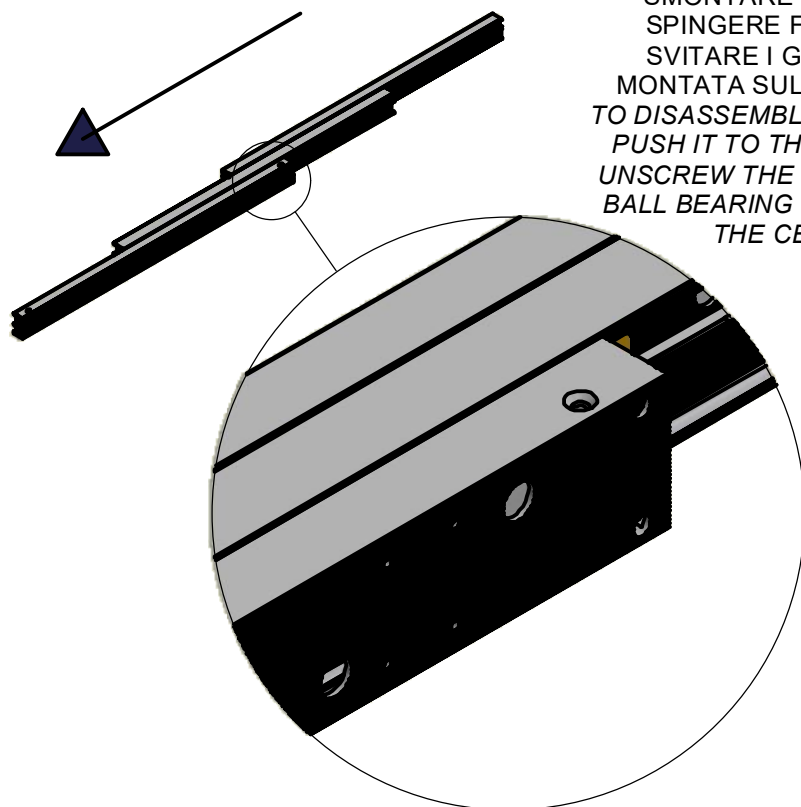
DIMENSIONI PIANO PLANE DIMENSIONS



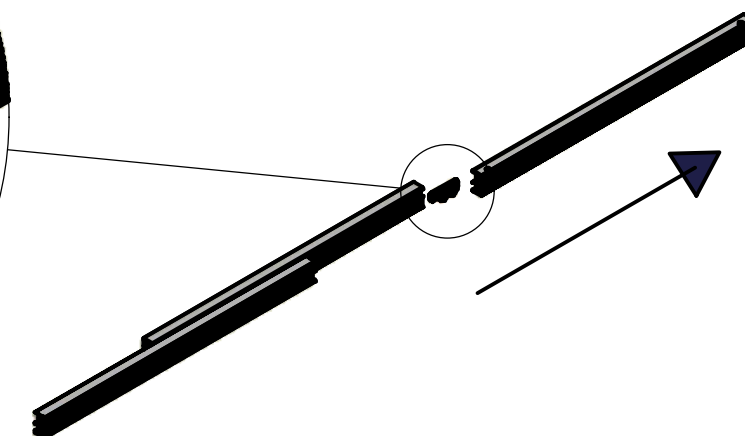
MONTAGGIO DEL MECCANISMO

MOUNTING OF THE MECHANISM

SMONTARE LA GUIDA INTERNA,
SPINGERE FINO A FINE CORSA.
SVITARE I GRANI DELLA SLITTA
MONTATA SULLA GUIDA CENTRALE.
TO DISASSEMBLY THE INTERNAL SLIDE,
PUSH IT TO THE LEFT TILL IT STOPS.
UNSCREW THE FIXING GRAINS OF THE
BALL BEARING SLEDGE MOUNTED ON
THE CENTRAL SLIDE.

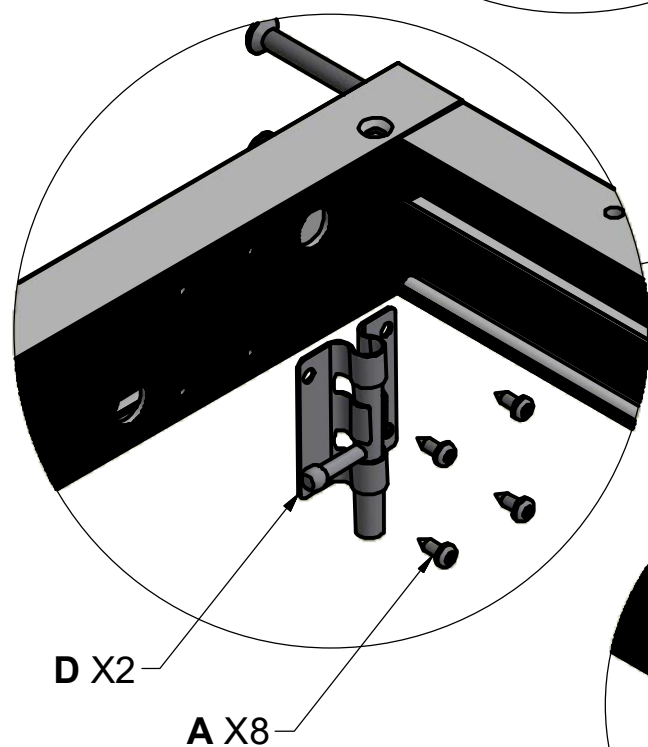


SPINGERE LA GUIDA INTERNA A DESTRA E
SMONTARLA CON LA SLITTA DALLE ALTRE GUIDE.
PUSH THE INTERNAL SLIDE TO THE RIGHT AND
DISMOUNT IT WITH THE SLEDGE FROM THE
OTHER TWO SLIDES.



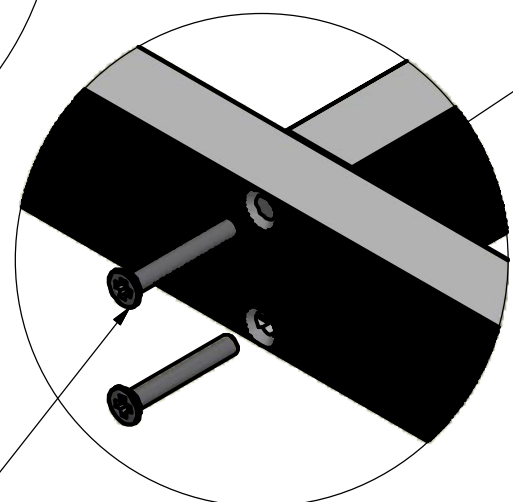
SACCHETTO ACCESSORI - ACCESSORIES

- A. Vite autofilettante TC 3.5x9.5 - 3.5x9.5 Tapping screw TC (x 8)
- B. Vite truciolare 3.5x16 - 3.5x16 chipboard screw (x 10)
- C. Vite TPS M6x40 trilobata - M6x40 FHCS screw (x 12)
- D. Blocco - Block (x 2)

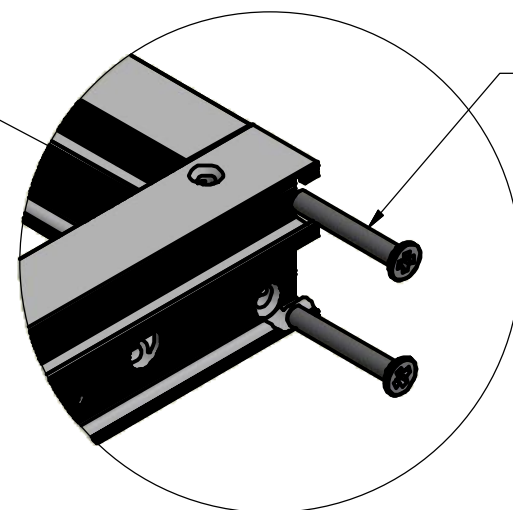
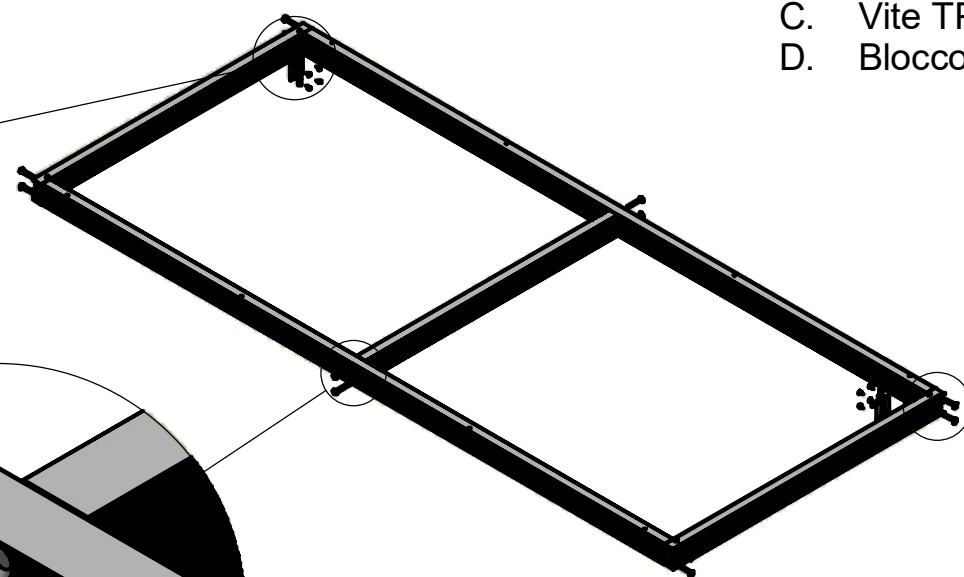


D X2

A X8



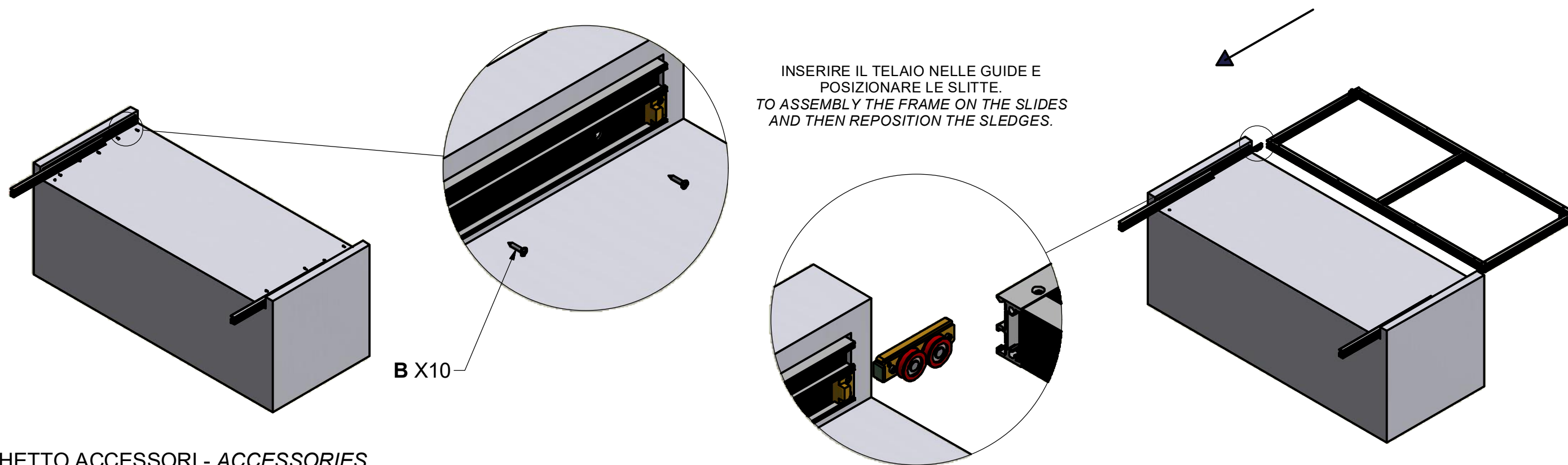
C X12



C X12

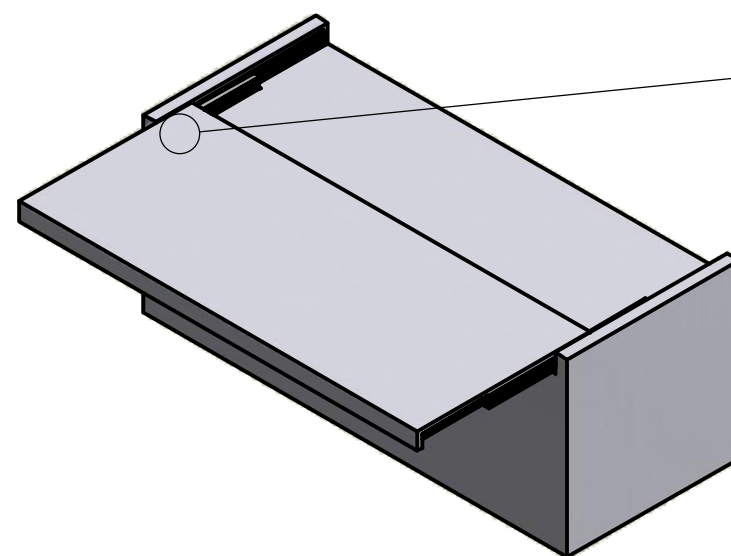
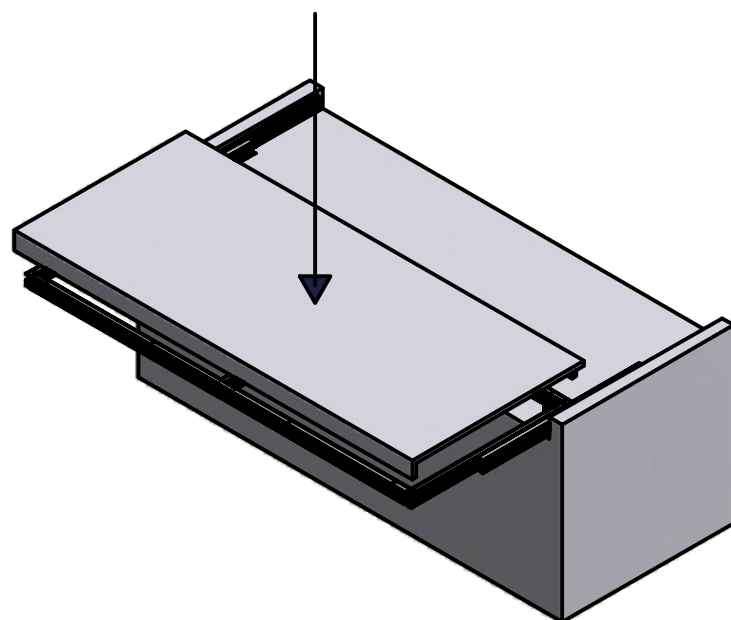
MONTAGGIO DEL MECCANISMO SUL MOBILE

MOUNTING OF THE MECHANISM ON THE CABINET



SACCHETTO ACCESSORI - ACCESSORIES

- A. Vite autofilettante TC 3.5x9.5 - 3.5x9.5 Tapping screw TC (x 8)
- B. Vite truciolare 3.5x16 - 3.5x16 chipboard screw (x 10)
- C. Vite TPS M6x40 trilobata - M6x40 FHCS screw (x 12)
- D. Blocco - Block (x 2)



BLOCCARE IL PIANO SPINGENDO IL BLOCCO VERSO IL BASSO.
SPINGERE VERSO L'ALTRO PER SBLOCCARLO.
BLOCK PLAN PUSHING THE LOCK DOWN. PUSH UP TO UNLOCK IT.