



**TOUCH ME 2.0**

dimmbable touch switch



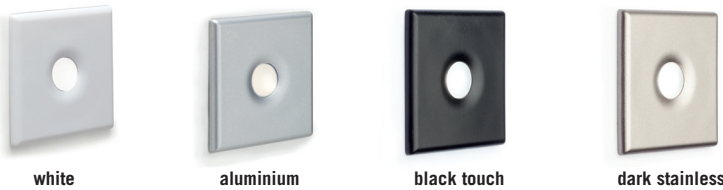
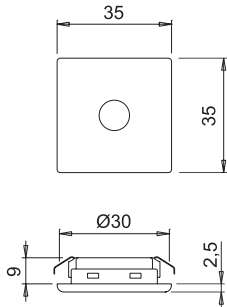
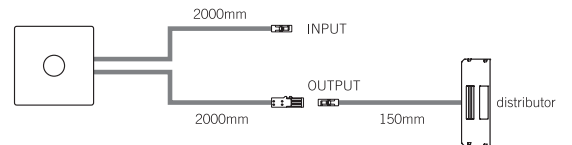
Code	Input	Output	Power	Connectors
17389_ _	12Vdc	12Vdc	30W	Micro12
17492_ _	24Vdc	24Vdc	60W	Micro24
17507_ _	12-24Vdc	12-24Vdc	30-60W	Micro12-Micro24

Code	Finish
01	white
10	aluminium
46	black touch
50	dark stainless



**How TOUCH ME works**

Turn on or off simply with a quick touch. Touch for longer to adjust light intensity (dimmer function). TOUCH ME will blink rapidly to indicate that maximum brightness has been reached. This will be stored until it is reset again (level memory).



**CAPSENS 2.0**

dimmbable capacitive switch



Code	Input	Output	Power	Connectors	Finish
1737003	12Vdc	12Vdc	30W	Micro12	black
1749303	24Vdc	24Vdc	60W	Micro24	black
1750603	12-24Vdc	12-24Vdc	30-60W	Micro12-Micro24	black



**How CAPSENS works**

Turn on and off simply by touching with the surface over the CAPSENS. Touch for longer to adjust light intensity (dimmer function). The luminaire connected to CAPSENS will blink rapidly once to indicate that maximum brightness has been reached. The brightness level will be stored until the next reset (level memory).

Material	Max. thickness
wood	30mm
plexiglass	20mm
glass	12mm

Indicative only. For more details see: [www.domusline.com](http://www.domusline.com)

