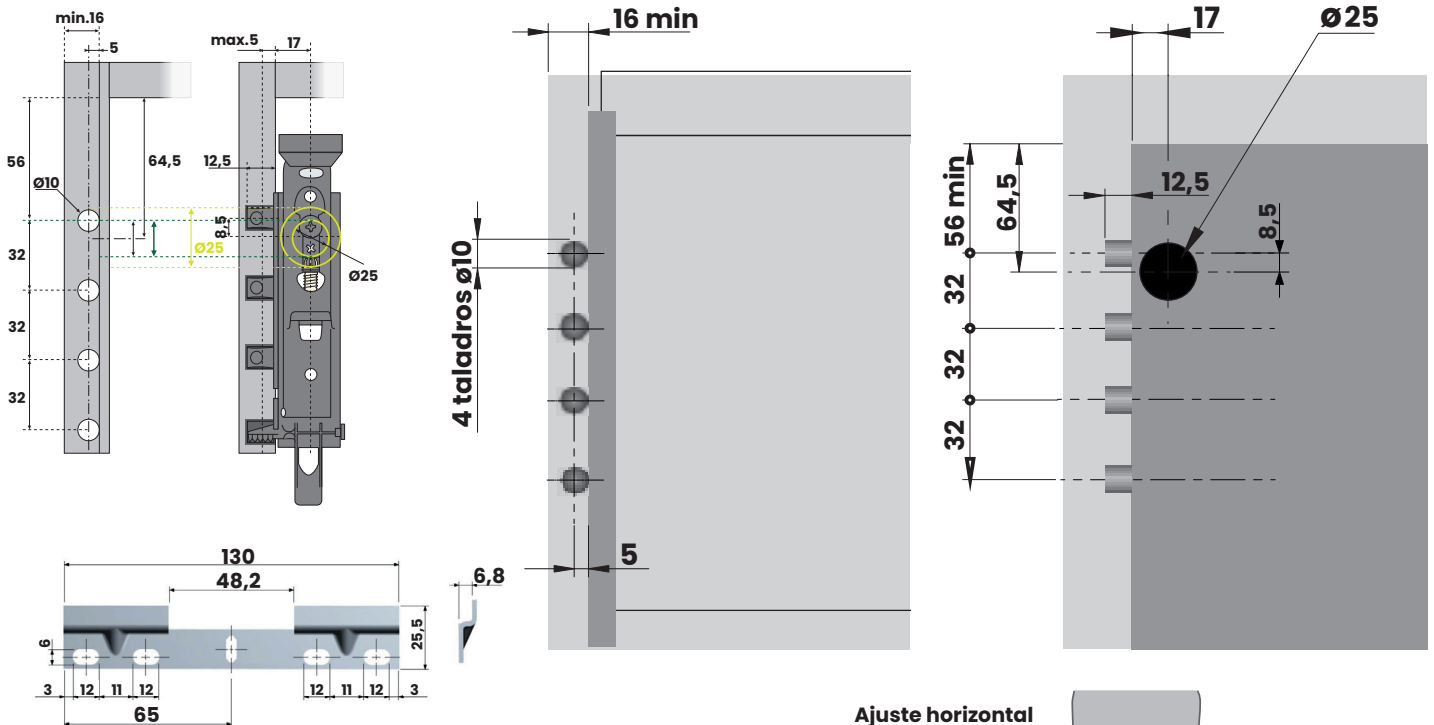


# ARANEA

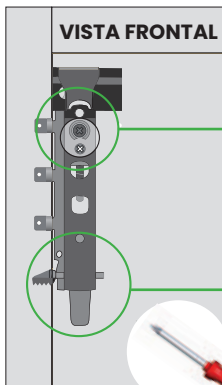
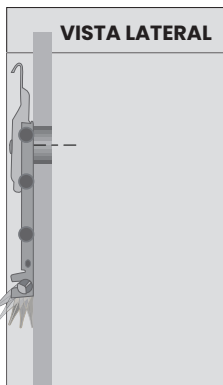
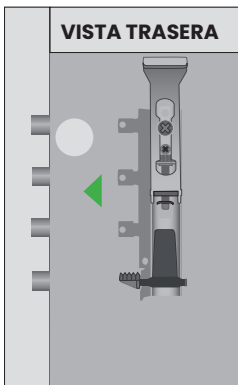
Colgador oculto + Chapa doble



**1** Insertar el colgador en los taladros del costado.

**2** Bajar la palanca 180° para bloquear.

**3** Proceder a la fijación y regulación según dibujo lateral.



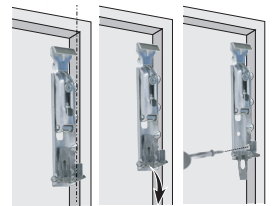
**4** Una vez ajustado insertar el tapon en el taladro para ocultar las regulaciones.



Ajuste horizontal

Ajuste vertical

**Tornillo rosca madera**  
Imprescindible la fijación del colgador mediante tornillo al costado del mueble.



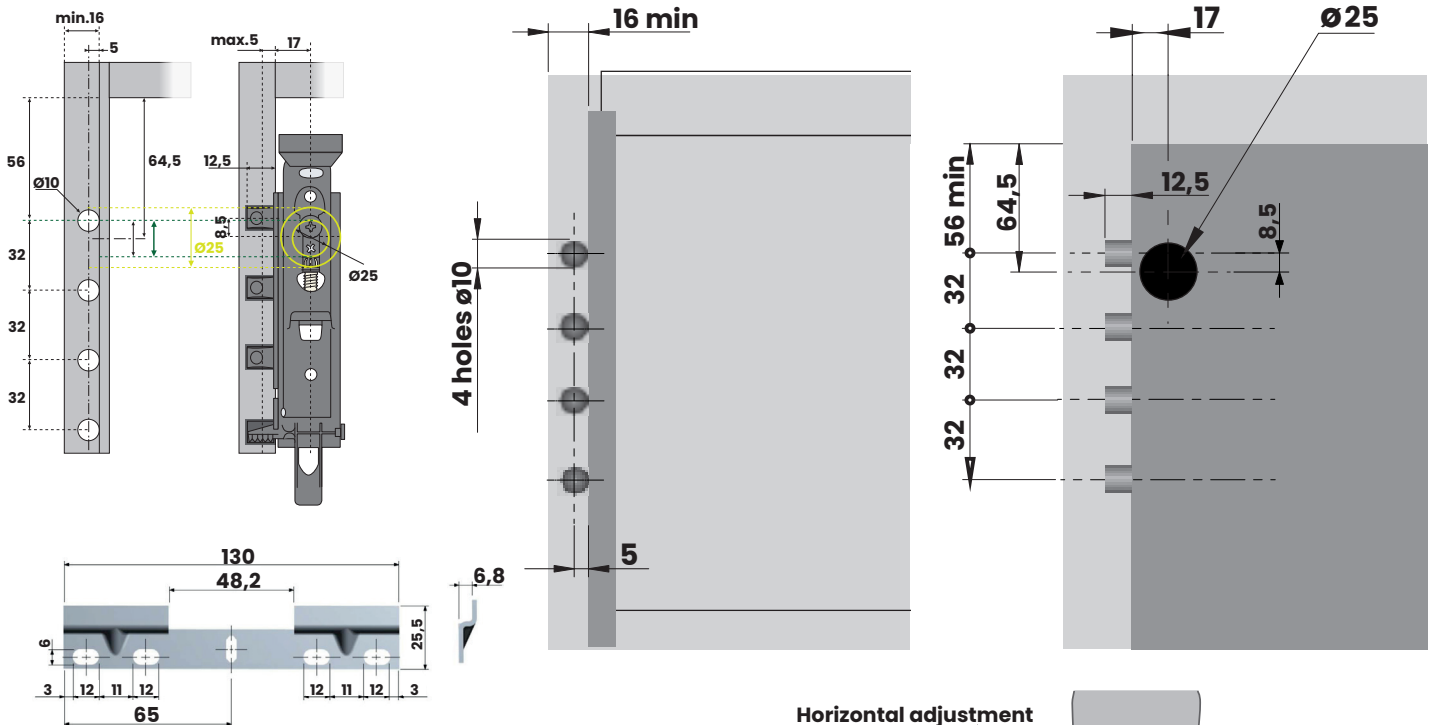
**¡MUY IMPORTANTE!**

Utilizar destornillador manual para efectuar las regulaciones del colgador.

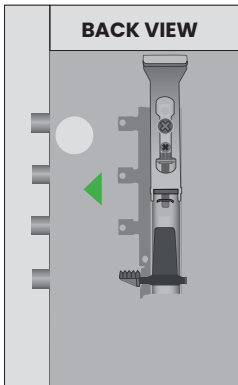


# ARANEA

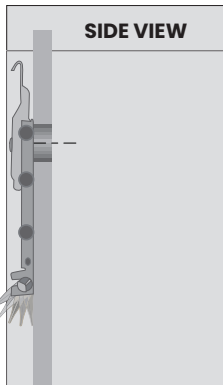
Hidden furniture hanger + Double sheet



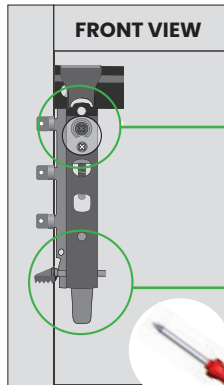
**1** Insert the hanger into the holes on the side.



**2** Lower the lever 180° to lock.



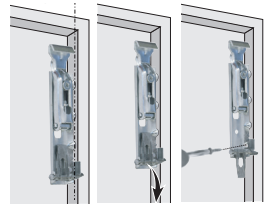
**3** Proceed with fixation and regulation according to the side drawing.



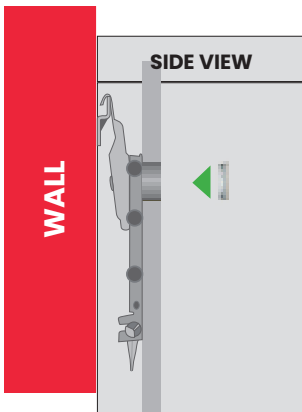
Horizontal adjustment

Vertical adjustment

Wood screws  
It is essential to fix the hanger with a screw to the side of the furniture.



**4** Once adjusted, insert the plug into the hole to hide the adjustments.



**VERY IMPORTANT!**

Use a manual screwdriver to make the hanger adjustments.

