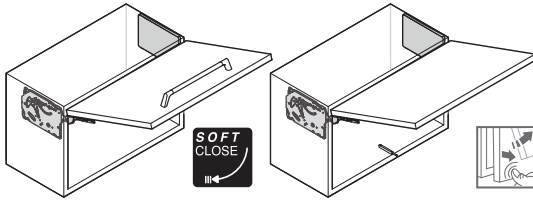




## FREEslim flap FREEslim flap pto

116524



4069680000

**1**

**A** 2x

**B** 8x  
ø 4 x 20

**2**

**C** **D**

**G** 4x

**O** 2x

**3**

**H** 8x  
ø 4 x 15

**P** 8x  
ø 3,5 x 9,5

**E** 2x

**F** 2x

**H** 8x  
ø 4 x 15

**P** 8x  
ø 3,5 x 9,5

**L** 2x

**M** 2x

**N** 14x

M4x8

**ptto**

**I** 272449XXXX

**J** 272450XXXX

**K** 272451XXXX

**+**

**M** 2x

272451XXXX

**N** 14x

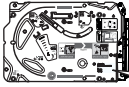
M4x8

[WS238]

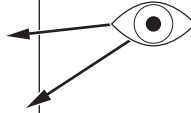
10.10.2025



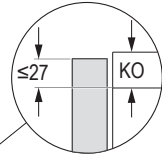
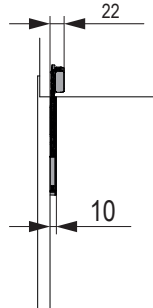
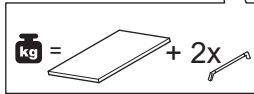
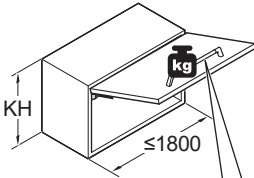
**i**



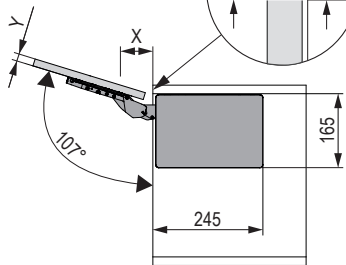
Article No: 2724390006  
 Check Date: 02/09/25  
 Model: soft close  
 Spring: 2x3 mm



PF* = KH x	FREEslim flap soft close	FREEslim flap pto	pto-Stößel
		2724390006	2724420006
* Power Factor	PF 480 - 4800	PF 480 - 4080	
KH			
225	2.1 - 21.3	2.1 - 18.1	Type 3 - strong (17.5 - 36.8 N)
250	1.9 - 19.2	1.9 - 16.3	
275	1.7 - 17.5	1.7 - 14.8	
300	1.6 - 16.0	1.6 - 13.6	
325	1.5 - 14.8	1.5 - 12.6	
350	1.4 - 13.7	1.4 - 11.7	
375	1.3 - 12.8	1.3 - 10.9	
400	1.2 - 12.0	1.2 - 10.2	
425	1.1 - 11.3	1.1 - 9.6	
450	1.1 - 10.7	1.1 - 9.1	
475	1.0 - 10.1	1.0 - 8.6	
500	1.0 - 9.6	1.0 - 8.2	
525	0.9 - 9.1	0.9 - 7.8	
550	0.9 - 8.7	0.9 - 7.4	
575	0.8 - 8.3	0.8 - 7.1	
600	0.8 - 8.0	0.8 - 6.8	
625	0.8 - 7.7	0.8 - 6.5	
650	0.7 - 7.4	0.7 - 6.3	



KO	Y	X
16 (19)	16	61 (71)
	18	54 (64)
	19	51 (61)
	22	41 (51)
	24	34 (44)
	26	27 (37)
	28	20 (30)



116524

4069680000

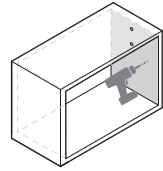
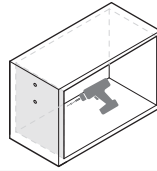
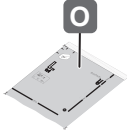
[WS238]

10.10.2025

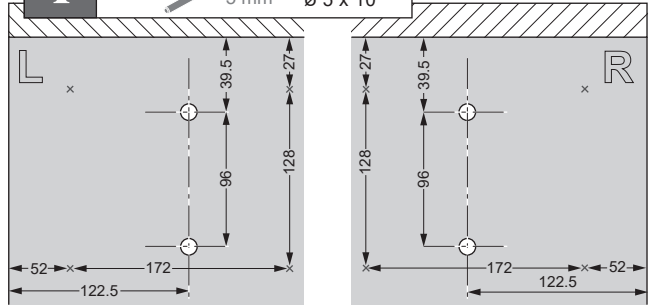
**1**



**i**



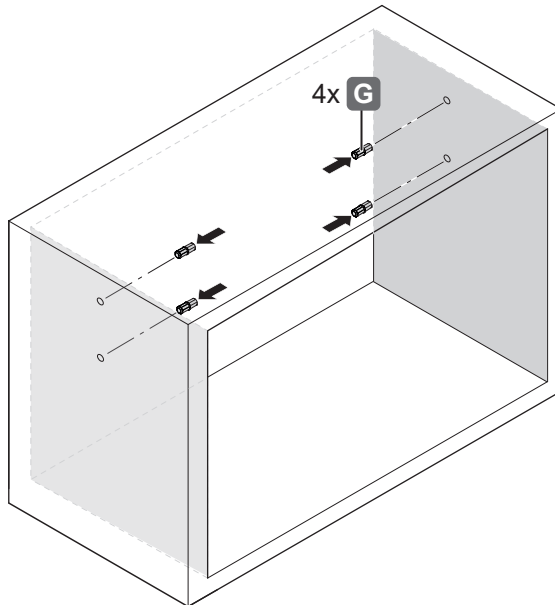
**i**



116524

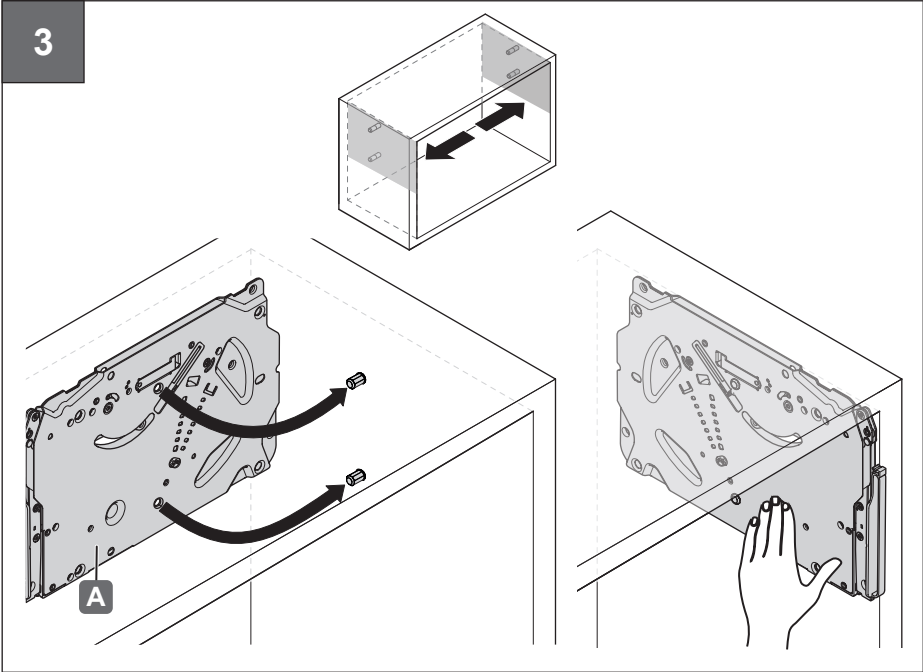
4069680000

**2**



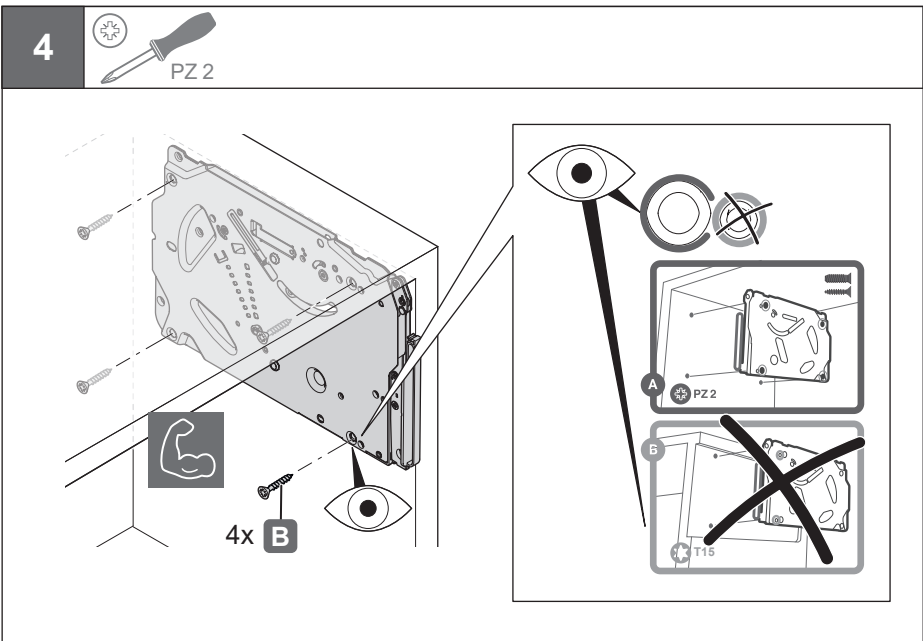
[WS238]

10.10.2025



116524

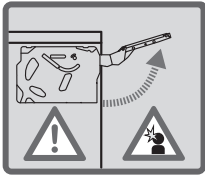
4069680000



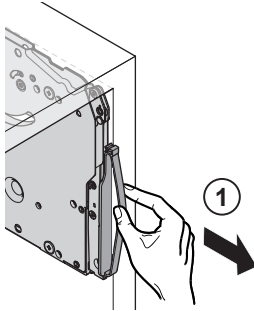
[WS238]

10.10.2025

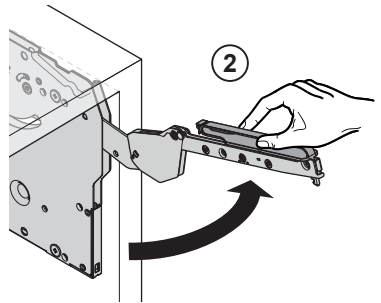
5



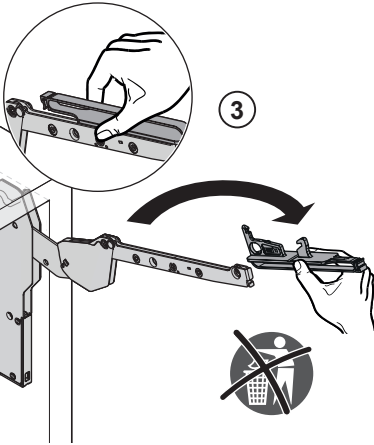
MIN. FORCE



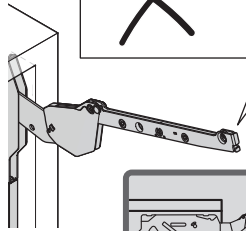
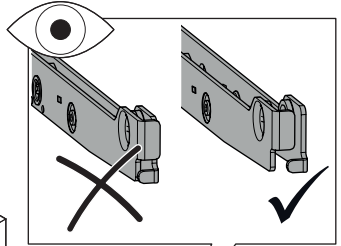
1



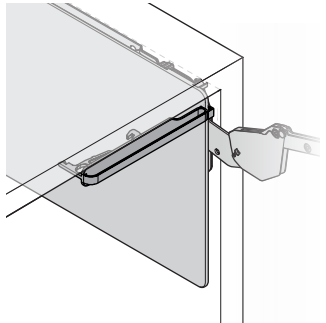
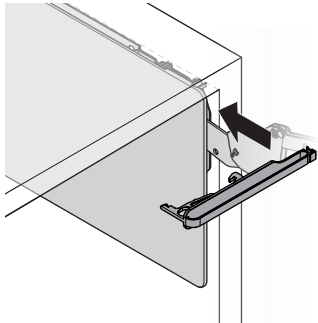
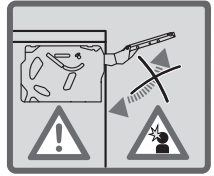
2



3



4



116524

4069680000

[WS238]

10.10.2025

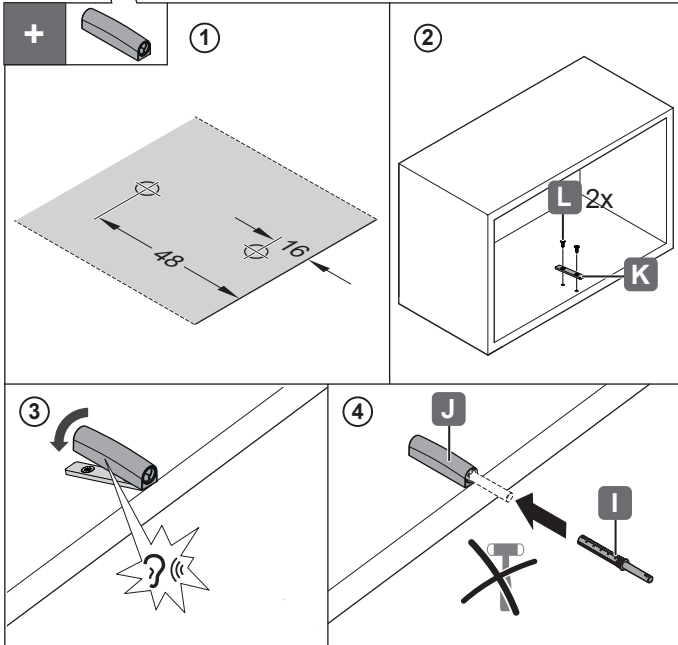
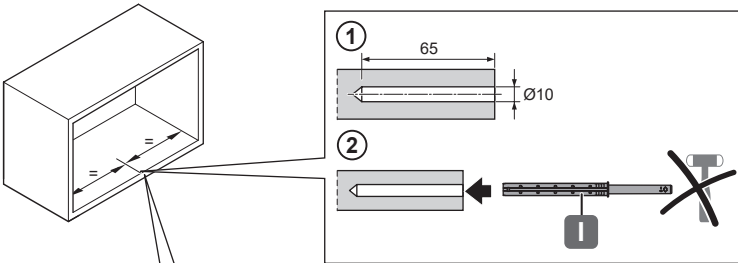
6



PZ 2



push



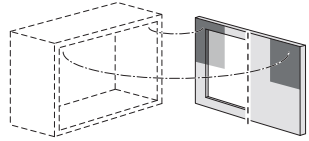
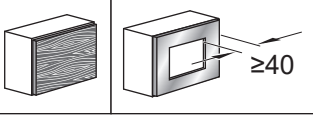
116524

406968000

[WS238]

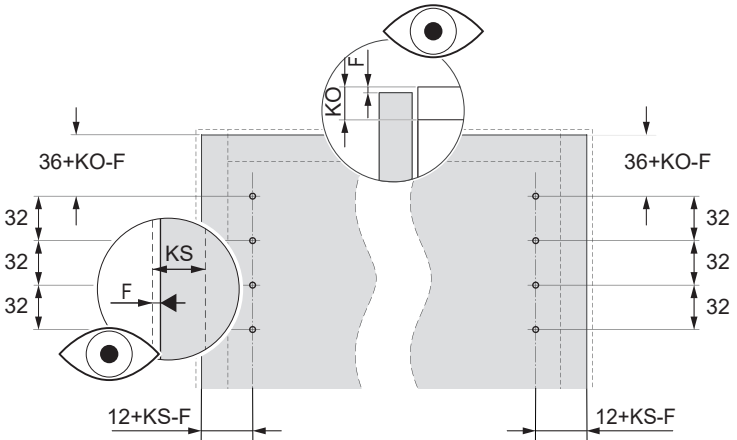
10.10.2025

7a

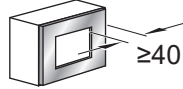
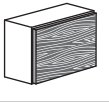


116524

4069680000

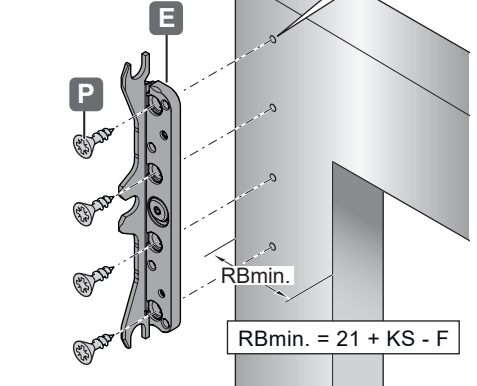
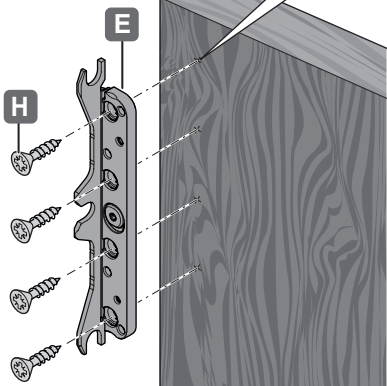


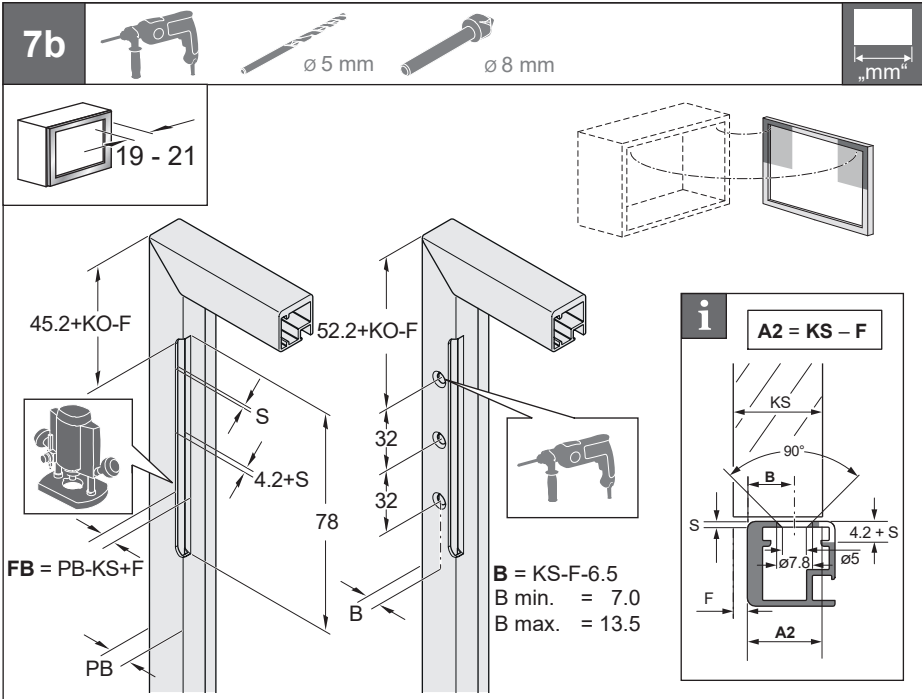
8a



[WS238]

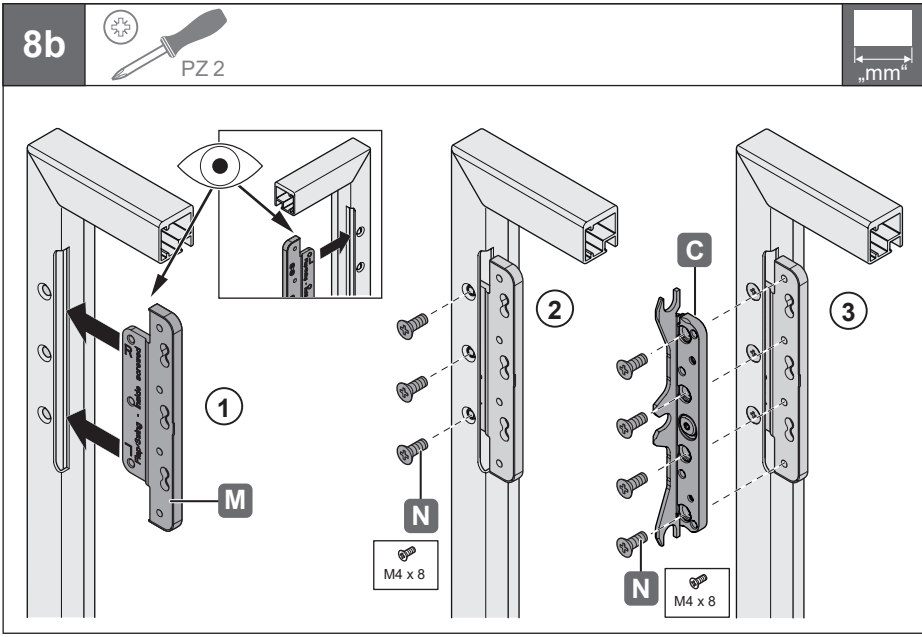
10.10.2025





116524

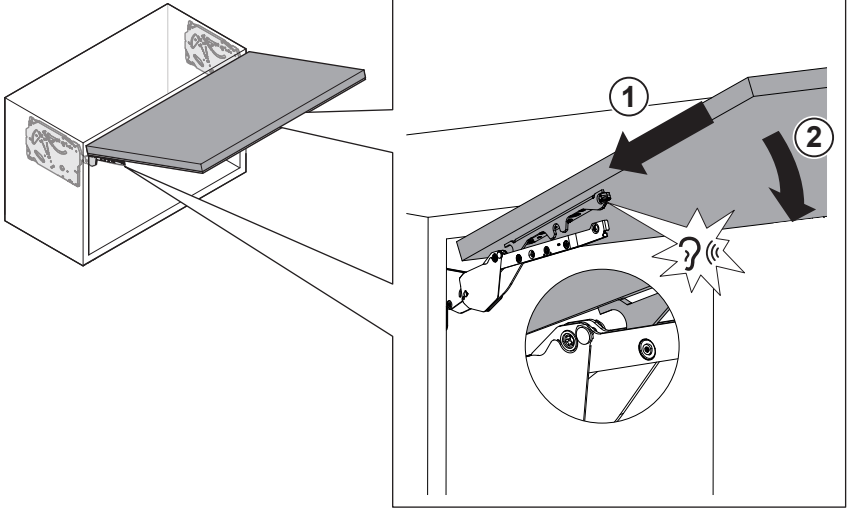
4069680000



[WS238]

10.10.2025

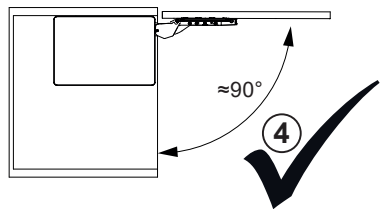
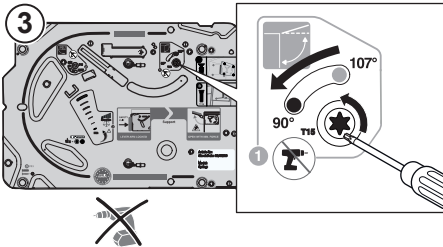
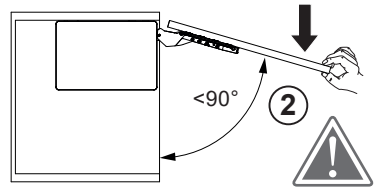
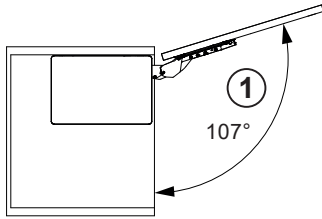
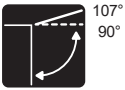
**9**



116524

4069680000

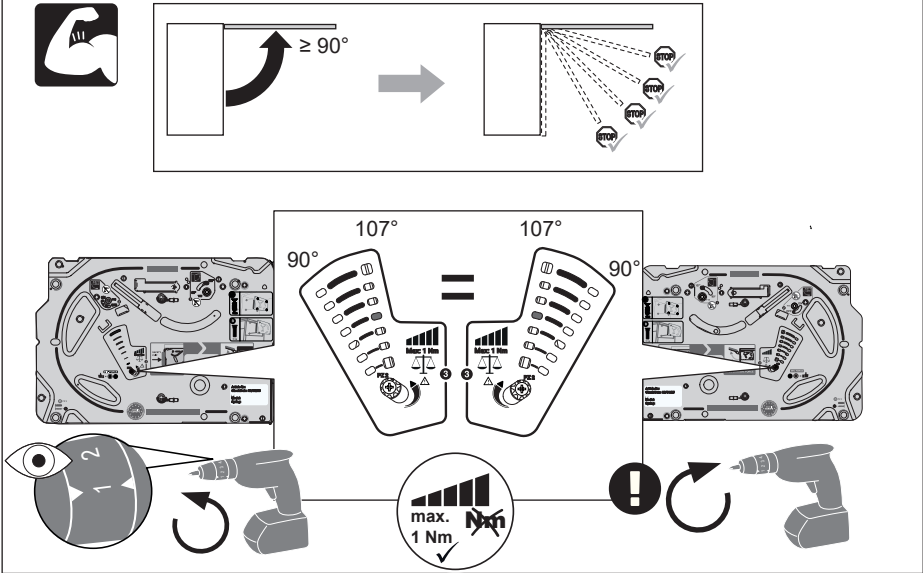
**10**



[WS238]

10.10.2025

**11**  PZ2 





$\geq 90^\circ$

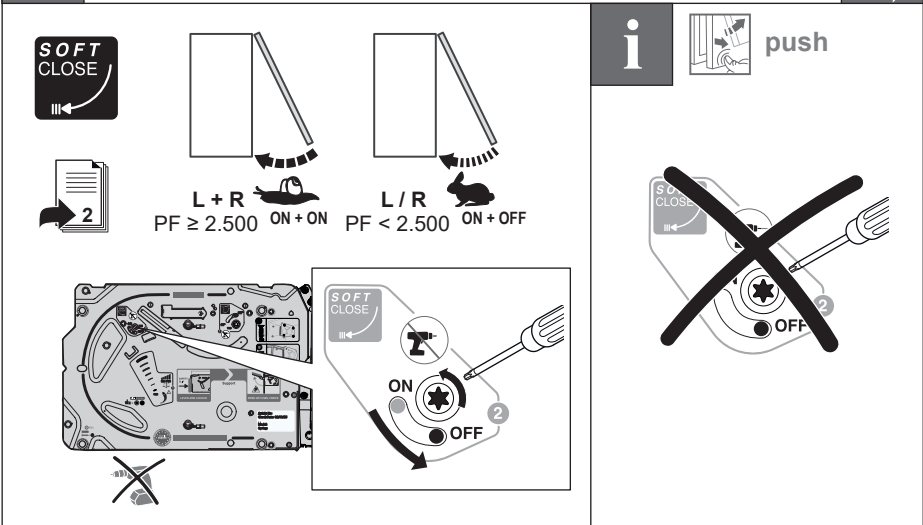
90° 107° 107° 90°

max. 1 Nm

116524

4069680000

**12**  T15 



**SOFT CLOSE**

**L + R** ON + ON  $PF \geq 2.500$

**L / R** ON + OFF  $PF < 2.500$

**i** push

**SOFT CLOSE**

ON OFF

[WS238]

10.10.2025

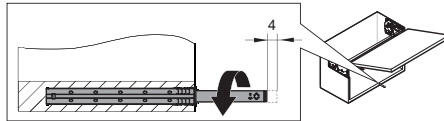
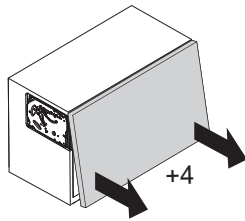
13



push

116524

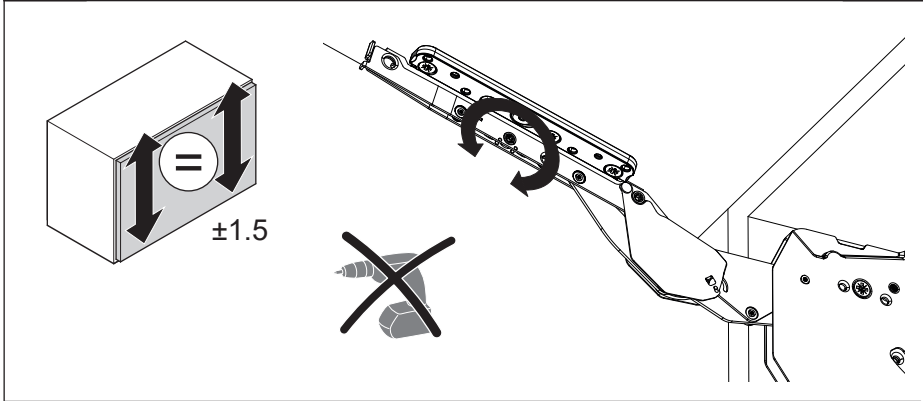
4069680000



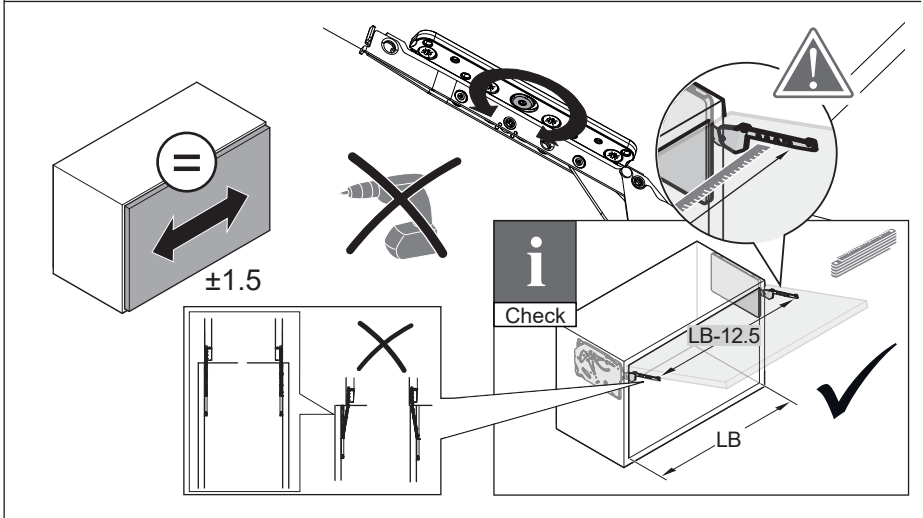
[WS238]

10.10.2025

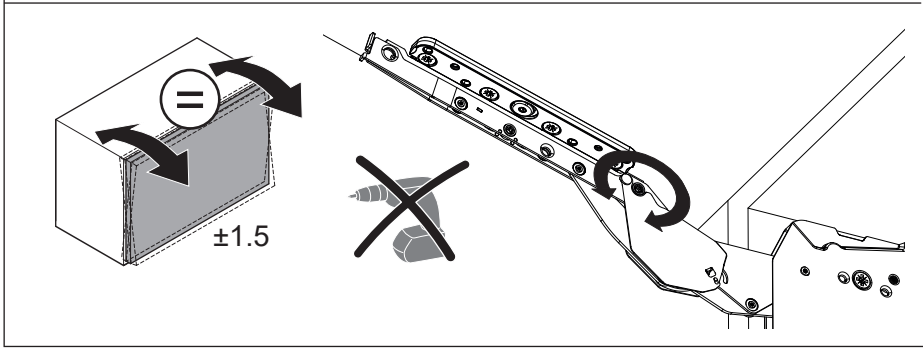
**14**  T15  



116524



4069680000

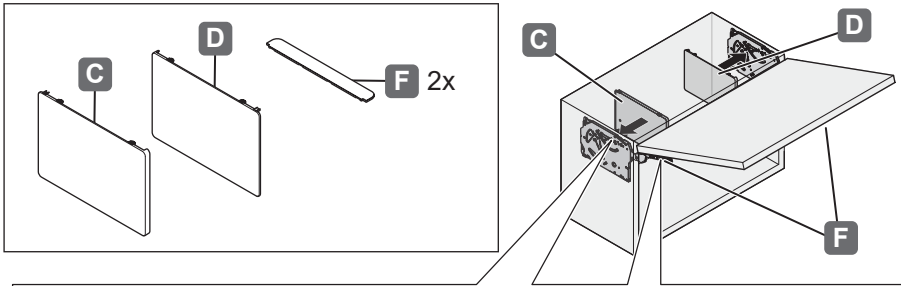


[WS238]

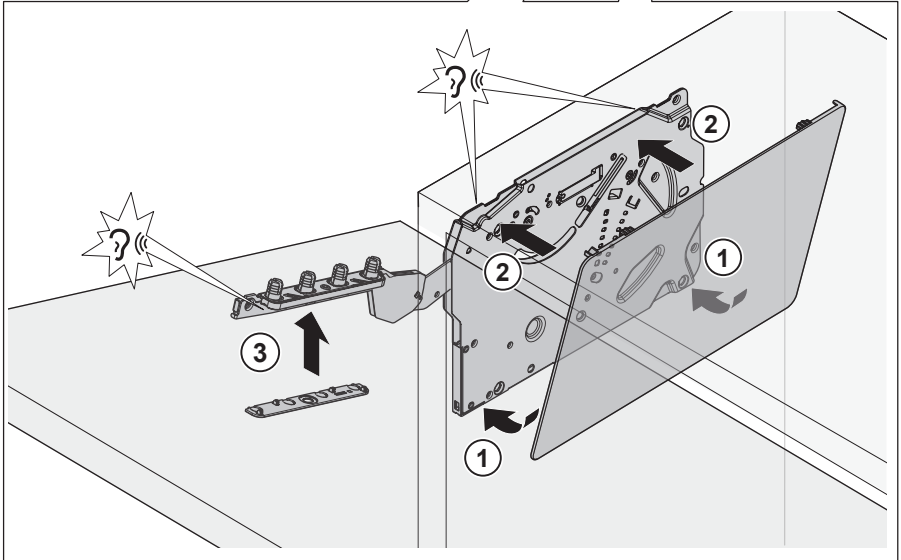
10.10.2025

15

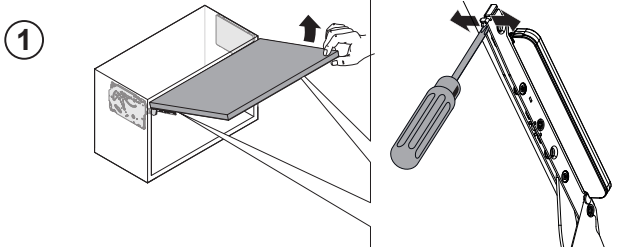
116524



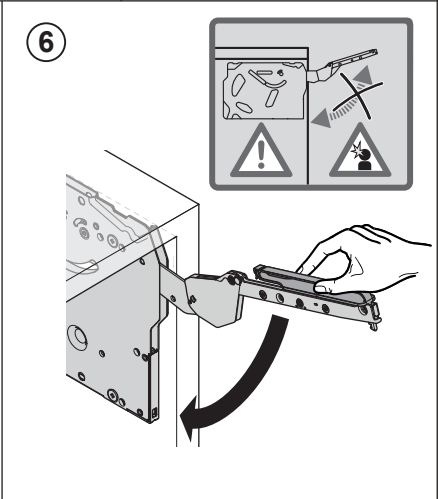
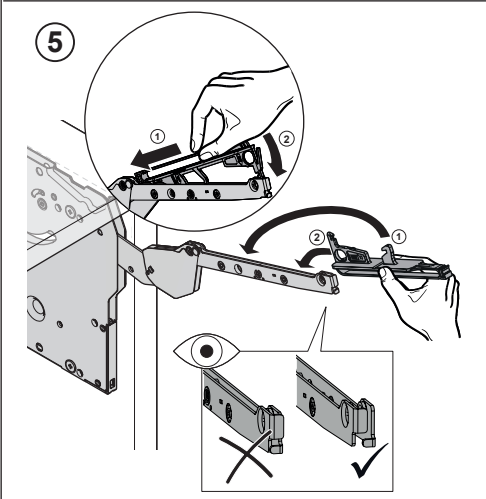
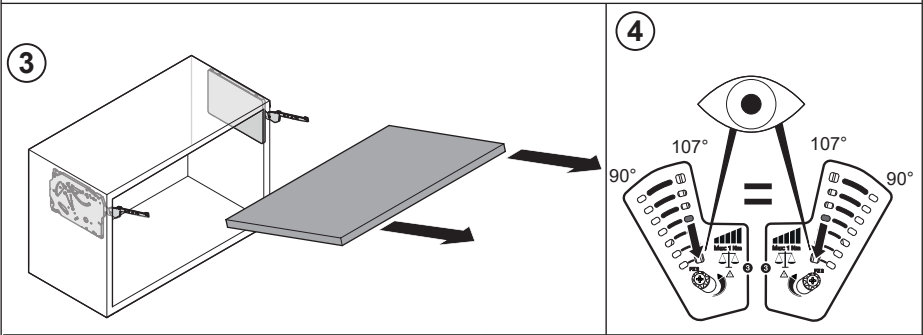
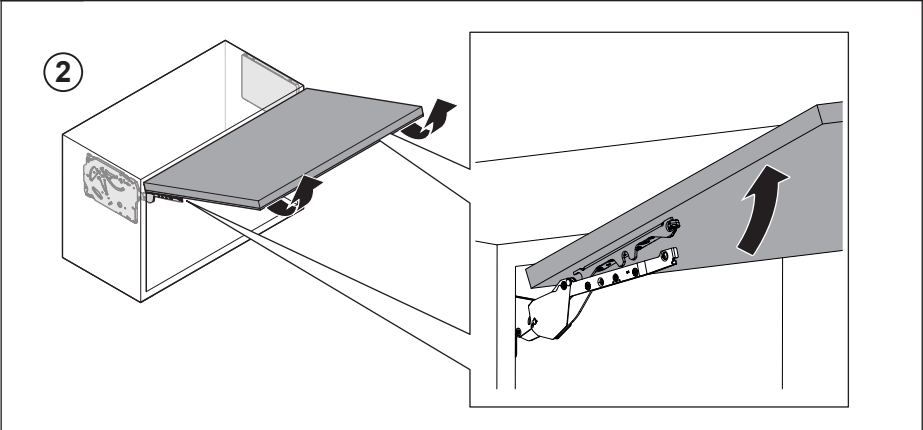
4069680000



[WS238]



10.10.2025



116524

406968000

[WS238]

10.10.2025

